
STUDENT HANDBOOK

1937-1938

MICHIGAN • STATE • COLLEGE

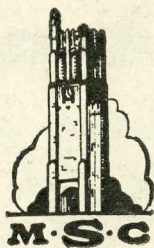
EAST LANSING

THIS STUDENT HANDBOOK is published by the College in an effort to provide a short, yet complete, summary of official rules and regulations, established organizations, and traditional events affecting college life.

Though planned principally for Freshmen, its contents are such that every undergraduate will find it valuable as a source of reference. For that reason, the Handbook should be preserved during the ensuing years.

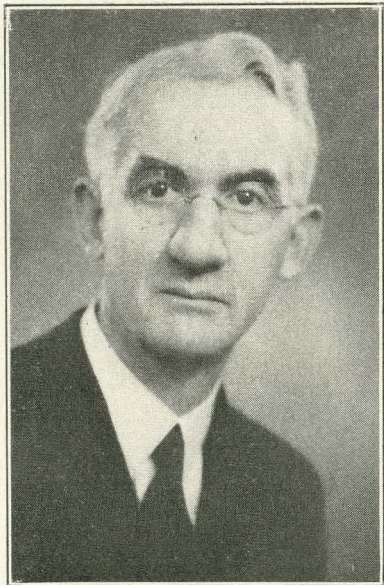
Michigan State College

Student Handbook



1937-1938

This book is presented to Freshmen
and to all other students who apply.



PRESIDENT R. S. SHAW

Welcome!

WE EXTEND a most hearty welcome to those who are entering Michigan State College for the first time, and are glad to greet again the students returning for a continuation of their studies. The College must offer those things you are seeking, for otherwise you would not have come, and we sincerely hope that your expectations may be met fully and that you will not in any way be disappointed.

You who are entering will no doubt meet many perplexing problems involving entrance, scholarship, social affairs, and financial difficulties. We hope that you will seek advice on all of these; it may be had for the asking.

Choose courses designed to lay a strong basic foundation on which you may later build the superstructure of specialization. Plan to get the most out of college in every good way and do not sacrifice other important essentials for high scholastic records only, for effective education includes more than scholastic achievement alone. The cultivation of social ease and grace is essential to the development of qualities of leadership; the building of strong bodies as proper structures for housing well-trained and well-controlled minds is important. A true education also recognizes and develops those spiritual qualities essential to uniformity and symmetry in the personality of the individual.

The uncertainties of your first year at college will clear away if given a little time, and you will find the officers, faculty, and upperclassmen of Michigan State College all most interested in helping you solve your problems.

ROBERT S. SHAW,
President.



DEAN ELISABETH CONRAD

Greetings!

May I extend my first greetings and welcome to you who are entering this fall for your college course?

To some of you these college days are the outcome of years of planning and you bring high hopes and ambitions. You and your family have looked forward to these days with great eagerness. Do not permit yourselves to be disappointed by first difficulties or to lose your aspirations in the strenuous days of Freshman Week. College offers even more opportunities for development than you dreamed, if only you learn to recognize them, though sometimes presented in unexpected guises.

Others of you who are entering may possibly be coming with very little serious forethought or conscious purpose other than for social good times. I hope you are going to find before long some field of interest which will enable you to discover your abilities and realize success.

My office was created and is maintained largely in order that the women of Michigan State College may have some central bureau of information, not only for academic problems but for those adjustment questions which every student faces when away from home. We have seen many freshmen who were considerably bewildered over their first problems and we know how to keep your confidential queries from being remembered against you when you have become distinguished seniors.

I hope you have brought with you enthusiasm, determination to succeed, and a fund of steady judgment which you are in the habit of using.

Please give me the pleasure of a personal acquaintance with you.

Best wishes for your success.

Sincerely,

ELISABETH CONRAD.



DEAN FRED T. MITCHELL

PERSONAL MESSAGE FROM THE DEAN OF MEN

Upon entering an institution of higher learning, one meets various perplexities. We believe that the chief function of the office of the Dean of Men is to help students adjust themselves to college life. It is impossible for me to visit all of you; therefore, I hope that you will feel welcome to come into the office at any time.

Freshman Week Activities are listed in this Handbook. I trust that you will read them carefully and follow directions diligently. These activities are planned to assist you in getting adjusted to college life. Classes begin on Monday following Freshman Week and I suggest that you procure your books promptly and be prepared for a good start. You will need to learn to adjust yourself to methods of college teaching, to extensive assignments, and to much work in the library. If you apply yourself diligently to your daily assignments, you may be assured that your first year at M. S. C. will be a relatively successful one.

There are many extra-curricular activities on the campus, which challenge the interest of men students and you should look forward to the benefits of participating in some of these organizations. A good academic record is imperative to participation.

Many kinds of social events are held on the campus during the school year and you are encouraged to attend such of these as seem to meet your interest. Participation, to a reasonable extent, in social affairs is necessary to a sane social development.

I wish you happiness and success at M. S. C.

FRED T. MITCHELL,
Dean of Men.

College Calendar, 1937-38

Fall Term, 1937—

Wednesday, September 8 to Saturday, September 11, inclusive, Entrance Examinations.

Friday, Saturday, Monday, September 10, 11, 13, Auditions in Applied Music by appointment with Secretary of the Department of Music.

Tuesday, September 14, 8:00 to 12:00 A. M., Seashore test for Musical Talent. Required of all new students in Music curricula.

Tuesday, September 14 at 1:00 P. M., to 5:00 P. M., September 18, Freshman Week.

Friday, September 17 to 5:00 P. M., Saturday, September 18, Registration of Upper Classmen.

Monday, September 20, Classes begin at 8:00 A. M.

Thursday, November 25, Thanksgiving Day, Holiday.

Monday, December 6 to Friday, December 10, Pre-registration for Winter Term.

Tuesday, December 14 to Friday, December 17, inclusive, Final Examinations.

Friday, December 17, Fall Term closes at 3:00 P. M.

Winter Term, 1938—

Monday, January 3, Registration of New Students and Re-classification.

Tuesday, January 4, Classes begin at 8:00 A. M.

Monday, March 14 to Friday, March 18, Pre-registration.

Tuesday, March 22 to Friday, March 25, inclusive, Final Examinations.

Friday, March 25, Winter Term closes at 3:00 P. M.

Spring Term, 1938—

Monday, April 4, Registration of New Students and Re-classification.

Tuesday, April 5, Classes begin at 8:00 A. M.

Monday, May 30, Memorial Day, Holiday.

Sunday, June 12, Baccalaureate Address.

Monday, June 13, Commencement Day.

Tuesday, June 14 to Friday, June 17, inclusive, Final Examinations.

Friday, June 17, College closes at 3:00 P. M.

Administrative Officers

ROBERT S. SHAW, President (Library Building).

JOHN A. HANNAH, Secretary (Administration Building).

CHARLES O. WILKINS, Treasurer (Administration Building).

ELIDA YAKELEY, Registrar, Secretary of Faculty (Administration Building).

ELISABETH W. CONRAD, Dean of Women (Woman's Building).

FRED T. MITCHELL, Dean of Men (Union Memorial Building).

ERNST A. BESSEY, Dean of the Graduate School (Botany Building).

ERNEST L. ANTHONY, Dean of Agriculture (Agricultural Hall).

HENRY B. DIRKS, Dean of Engineering (Olds Hall).

MARIE DYE, Dean of Home Economics (Home Economics Building).

WARD GILTNER, Dean of Veterinary Science (Bacteriology Building).

RALPH C. HUSTON, Dean of Applied Science (Chemistry Building).

LLOYD C. EMMONS, Dean of Liberal Arts (Liberal Arts Building).

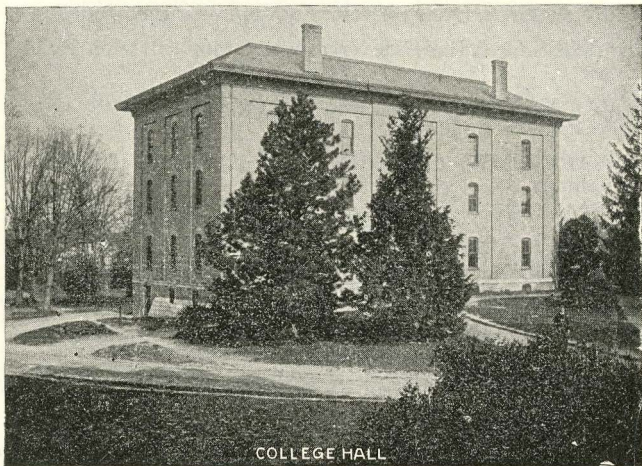
JACKSON E. TOWNE, Librarian (Library Building).

FRED T. MITCHELL, Chairman of Freshman Week (Union Memorial Building).

DR. R. M. OLIN, Director of Health Service (Hospital).

RALPH H. YOUNG, Director of Athletics (Gymnasium).

S. E. CROWE, Director of Summer Session (Olds Hall).



Had you been a student at State in 1857, all of your classes would have been in College Hall. This building, which stood until about a decade ago on the site of Beaumont Tower, was the first building erected in America for the teaching of scientific agriculture.

Freshman Week---

Directions and Complete Program

Foreword

Michigan State College puts forth every effort to assist the student in starting a college career that will be a success. With this purpose in mind, Freshman Week was inaugurated. Seventy-four members of the faculty give liberally of their time to serve as freshman advisers. They place themselves at your service during Freshman Week and throughout your freshman and sophomore years to assist you in selecting your course of study, to guide you through the various activities of Freshman Week, to advise you regarding the proper use of your time in college and to serve as intimate friends in any problems that may arise in connection with your college career. If you make proper use of your adviser, you will not be likely to meet problems that you cannot surmount. It is the student who comes to college confident that he needs no adviser who most often finds himself faced with scholastic or other difficulties before the close of the freshman year. Fortify yourself against those difficulties by availing yourself of the service of your adviser whenever you are perplexed about any detail of your life at college, whether it pertains to college problems or to off-campus problems.

During Freshman Week you are required to complete a number of activities. These are set forth clearly in the programs for the various groups in the pages that follow. Coupon books are furnished you, containing a coupon for each of the activities. These coupons are taken up as the respective activities are completed and attendance is immediately checked. Included among these activities are an English placement examination, a Reading Test, and a Psychological Examination. Your record in the English examination will determine whether you will be required to complete four or only three terms of English in college. You will not be permitted to classify until you have taken the English examination. Your record in the psychological examination is given to your adviser and is made a part of your permanent record in the Registrar's office. **NO STUDENT IS EXCUSED FROM ANY ACTIVITY.**

If the directions which follow are observed carefully, much confusion will be avoided, the program of Freshman

Week will run smoothly, and you will have no difficulty in entering your program of studies when the first class meets on Monday morning.

DIRECTIONS FOR FRESHMEN

1. You have been assigned to an adviser, a group, and a section. See pages 17-38 for the programs of the various groups and follow exactly the program of your group. Advisers and their group and section are arranged in alphabetical order on page 14. Consult this list in case you do not remember the number of your group.
2. See that you have the proper coupon ready and leave it as directed (see face of the coupon) for each activity.
3. Be on time for every activity. Remember that you are moving with a group that cannot wait for anyone who is tardy.
4. Vacant hours which you may use to become acquainted with the campus have been provided. Use the map in the Handbook and learn to identify the various buildings. You will need to have this information when you start to attend classes. Visit any departments of the college in which you may be interested and talk with the head of the department or other members of the staff.
5. Feel free to ask questions of the faculty, of other students, or of anyone you meet on the campus. You will find everyone willing to help you. Many of your questions, however, can be answered by this Handbook, so consult it first.
6. Every freshman will register for at least one Saturday class, unless his adviser has given him in writing an exemption from this requirement.
7. All students entering the music department curricula or the Liberal Arts Division, with a major in music, must have entrance examinations both in their major instrument or voice, and in their general musical ability. These examinations must be completed before enrollment is made. For dates see page 16.

ADVISERS FOR FRESHMEN

Adviser	Group	Section	Temporary Office
Baker, W. J.	XIV	64	27 Forestry Bldg.
Banzet, E. M.	IV	16	109 Hort. Bldg.
Barr, C. W.	XIV	65	204 Hort. Bldg.
Bateman, R. L.	X	44	101 Kedzie Chem. Lab.
Brattin, C. L.	I	1	301 Olds Hall
Brown, L. H.	XIV	66	207 Ag. Hall
Brown, R. V.	X	45	102 Ag. Hall
Butler, Edith	IV	17	108 Union Annex
	X	46	119 Kedzie Chem. Lab.
Card, C. G.	XIV	67	100 Ag. Hall
Carlson, C. W.	X	47	222 Kedzie Chem. Lab.
Caswell, J. T.	IV	18	208 Hort. Bldg.
Chamberlain, F. W.	XIII	61	201 Anatomy Bldg.
Clark, J. A.	IV	19	8 Shop
Cockrell, W. L.	I	2	210 Olds Hall
Daubert, R. B.	X	48	2 Gymnasium
Davis, R. J.	XI	49	9 Shop
Fairbanks, O. W.	I	3	302 Olds Hall
Fennell, R. A.	XI	50	Botany Lecture
Fields, Harold	VI	26	103 Hort. Bldg.
Freeman, V. A.	XIV	68	111 Ag. Hall
Frimodig, L. L.	XI	51	6 Gymnasium
Garvin, Josephine	XI	52	Gymnasium, West Wing
Gay, M. C.	III	11	102 Psych. and Phil. Bldg.
Gould, I.	XV	69	206 Dairy
Grover, E. L.	V	21	15 Union Annex
Hamilton, C. C.	V	22	4 Shop
Hedrich, W. A.	I	4	116 Olds Hall
Hill, J. D.	III	12	103 Union Annex
Hoffer, C. R.	V	23	202 Psych. and Phil. Bldg.
Hoppert, C. A.	XI	53	333 Kedzie Chem. Lab.
Hurd, C. C.	V	24	3 Union Annex
Jefferson, C. H.	XV	70	103 Ag. Hall
Johnson, H. E.	XIII	62	101 Anatomy Bldg.
Kackley, Josephine	V	25	220 Abbot Hall
	XI	54	107 Physics
Kimber, H. H.	VI	27	207 Hort. Bldg.
King, T. H.	XII	55	8 Gymnasium
Lee, Jeanette	VIII	37	1 Home Ec. Bldg.
Lyons, E. B.	VI	29	306 Hort. Bldg.
Mansfield, Evelyn	VIII	38	202 Home Ec. Bldg.
Miller, Catherine	VIH	39	309 Home Ec. Bldg.
Miller, C. A.	I	5	105 Olds Hall
Miller, C. W.	XII	56	121 Physics
Musselman, H. H.	XV	71	14 Ag. Hall

ADVISERS FOR FRESHMEN—(Con.)

Adviser	Group	Section	Temporary Office
Nickle, C. H.	VI.	30.	1 Shop
Ohl, R. T.	VI.	28.	7 Union Annex
Orbeck, A.	IV.	20.	7 Shop
Osborn, B. K.	II.	6.	107 Olds Hall
Partlow, Margaret.	IX.	40.	307 Home Ec. Bldg.
Peck, Theodora.	IX.	42.	102 Home Ec. Bldg.
Pettigrove, H. R.	XV.	72.	316 Ag. Hall
Posthumus, G. J.	II.	7.	6 Shop
Powell, J. E.	III.	13.	104 Union Annex
Prophet, E. C.	XII.	57.	407 Ag. Hall
Propp, G. J.	XV.	73.	110 Ag. Hall
Randall, K. C.	VII.	31.	2 Shop
Reis, Frances.	IX.	43.	101 Home Ec. Bldg.
Rix, C. N.	II.	8.	207 Olds Hall
Robbins, P. W.	XV.	74.	Entomology Lecture Room
Sheedy, J. W.	III.	14.	4 Union Annex
Simmonds, Helen.	IX.	41.	315 Home Ec. Bldg.
Starin, Frances.	VIII.	36.	201 Home Ec. Bldg.
Stewart, E. H.	II.	9.	308 Olds Hall
Stiefel, J. R.	XII.	58.	206 Ag. Hall
Strong, F. C.	XII.	59.	19 Forestry Bldg.
Theroux, F. R.	II.	10.	208 Olds Hall
Tremblay, Jean.	VII.	32.	3 Shop
Upham, C. R.	III.	15.	104 Psych. Bldg.
Warren, R. M.	XII.	60.	402 Olds Hall
Welmrs, E. G.	VII.	33.	111 Union Annex
Wilson, O. W.	VII.	34.	5 Shop
Winckler, Katherine.	VII.	35.	115 Union Annex
Young, F. W.	XIII.	63.	203 Anatomy Bldg.

ENTRANCE EXAMINATIONS IN MUSIC

September 10, 11, 13 (Friday, Saturday and Monday)
Auditions in applied music by appointment with the secretary of the Music Department.

Tuesday, September 14, 8:00 to 12:00 A. M., test for Musical Talent—Abbot Hall.



*State News offers valuable experience
for those interested in journalism.*

PROGRAMS FOR FRESHMAN GROUPS

GROUP I (Engineers)

Sections 1, 2, 3, 4, 5

Tuesday, Sept. 14

- 1:00- 2:00 Convocation—Demonstration Hall.
- 2:00- 3:00 English Test—111 Olds Hall.
- 3:00- 4:00 Reading Test—111 Olds Hall.
- 4:30- 5:00 Register—109 Agricultural Hall.

Wednesday, Sept. 15

- 8:00-10:00 See Adviser and Classify.
- 10:00-12:00 Pay Fees and Complete Classification.
- 2:00- 4:00 Military Uniform—Demonstration Hall.

Thursday, Sept. 16

- 8:30- 9:00 Photograph, Sec. 1, 2—Beaumont Tower.
- 8:30- 9:00 Library Trip, Sec. 3, 4.
- 9:00- 9:30 Photograph, Sec. 3, 4—Beaumont Tower.
- 9:00- 9:30 Library Trip, Sec. 5.
- 9:30-10:00 Library Trip, Sec. 1, 2.
- 9:30-10:00 Photograph, Sec. 5—Beaumont Tower.
- 10:00 Medical Exam.—College Hospital.
- 1:00- 2:00 Division Convocation—111 Olds Hall.
- 2:00- 3:00 Dean's Hour—111 Olds Hall.

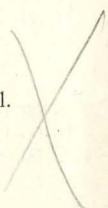
Friday, Sept. 17

- 1:00- 2:00 Psychological Test—111 Olds Hall.
- 2:00- 3:00 President's Convocation—Demonstration Hall.
- 3:00- 4:00 Convocation (Men)—Demonstration Hall.

GROUP II (Engineers)**Sections 6, 7, 8, 9, 10****Tuesday, Sept. 14**

- 1:00- 2:00 Convocation—Demonstration Hall.
2:00- 3:00 English Test—111 Olds Hall.
3:00- 4:00 Reading Test—111 Olds Hall.

Wednesday, Sept. 15

- 8:30- 9:00 Register—109 Agricultural Hall.
9:00-12:00 See Adviser and Classify.
1:00- 3:00 Pay Fees and Complete Classification.
4:00- 6:00 Military Uniform—Demonstration Hall.
- 

Thursday, Sept. 16

- 8:00 Medical Examination—College Hospital.
11:00-11:30 Library Trip, Sec. 6, 7.
11:00-11:30 Photograph, Sec. 8, 9, 10—Beaumont Tower.
11:30-12:00 Photograph, Sec. 6, 7—Beaumont Tower.
11:30-12:00 Library Trip, Sec. 8, 9, 10.
1:00- 2:00 Division Convocation—111 Olds Hall.
2:00- 3:00 Dean's Hour.

Friday, Sept. 17

- 1:00- 2:00 Psychological Test—111 Olds Hall.
2:00- 3:00 President's Convocation—Demonstration Hall.
3:00- 4:00 Convocation (Men)—Demonstration Hall.

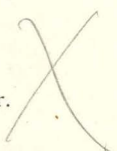
GROUP III (Business Admin.)

Sections 11, 12, 13, 14, 15

Tuesday, Sept. 14

- 1:00- 2:00 Convocation—Demonstration Hall.
2:00- 3:00 English Test—122 Kedzie Chem. Lab.
3:00- 4:00 Reading Test—122 Kedzie Chem. Lab.
5:00- 5:30 Register—109 Agricultural Hall.

Wednesday, Sept. 15

- 8:00-10:00 See Adviser and Classify.
10:00-12:00 Pay Fees and Complete Classification.
4:00- 4:30 Photograph, Sec. 11, 12—Beaumont Tower.
4:00- 4:30 Library Trip, Sec. 13, 14.
4:30- 5:00 Library Trip, Sec. 11, 12.
4:30- 5:00 Photograph, Sec. 13, 14—Beaumont Tower.
- 

Thursday, Sept. 16

- 8:00- 9:00 Division Convocation—Demonstration Hall.
9:00-10:00 Dean's Hour—Demonstration Hall.
10:00-12:00 Physical Exam. (Women)—West Wing Gym.
1:00- 1:30 Library Trip, Sec. 15.
1:30- 2:00 Photograph, Sec. 15—Beaumont Tower.
2:00 Medical Exam. (Women)—College Hospital.
2:00- 4:00 Military Uniform—Demonstration Hall.

Friday, Sept. 17

- 1:00- 2:00 Psychological Test—122 Kedzie Chem. Lab.
2:00- 3:00 President's Convocation—Demonstration Hall.
3:00- 4:00 Convocation (Men)—Demonstration Hall.
3:00- 4:00 Convocation (Women)—122 Kedzie Chem. Lab.

Saturday, Sept. 18

- 8:00 Medical Exam. (Men)—College Hospital.

GROUP IV (Liberal Arts)**Sections 16, 17, 18, 19, 20****Tuesday, Sept. 14**

- 1:00- 2:00 Convocation—Demonstration Hall.
2:00- 3:00 English Test—206 Hort. Bldg.
3:00- 4:00 Reading Test—206 Hort. Bldg.

Wednesday, Sept. 15

- 8:00- 8:30 Register—109 Agricultural Hall.
8:30-11:00 See Adviser and Classify.
11:00- 3:00 Pay Fees and Complete Classification.

Thursday, Sept. 16

- 8:00- 9:00 Division Convocation—Demonstration Hall.
9:00-10:00 Dean's Hour—Demonstration Hall.
10:00-12:00 Physical Examination—West Wing Gym.
(Women).
1:00- 1:30 Library Trip, Sec. 16.
1:00- 1:30 Photograph, Sec. 17, 18—Beaumont Tower.
1:30- 2:00 Photograph, Sec. 16—Beaumont Tower.
1:30- 2:00 Library Trip, Sec. 17, 18.
3:00 Medical Exam. (Women)—College Hospital.
4:00- 6:00 Military Uniform—Demonstration Hall.

Friday, Sept. 17

- 10:00-10:30 Library Trip, Sec. 19, 20.
10:30-11:00 Photograph, Sec. 19, 20—Beaumont Tower.
1:00- 2:00 Psychological Test—206 Hort. Bldg.
2:00- 3:00 President's Convocation—Demonstration Hall.
3:00- 4:00 Convocation (Women)—122 Kedzie Chem. Lab.
3:00- 4:00 Convocation (Men)—Demonstration Hall.

Saturday, Sept. 18

- 9:00 Medical Exam. (Men)—College Hospital.


GROUP V (Liberal Arts)

Sections 21, 22, 23, 24, 25

Tuesday, Sept. 14

- 1:00- 2:00 Convocation—Demonstration Hall.
2:00- 3:00 English Test—206 Hort. Bldg.
3:00- 4:00 Reading Test—206 Hort. Bldg.

Wednesday, Sept. 15

- 9:00- 9:30 Register—109 Agricultural Hall.
9:30- 2:00 See Adviser and Classify.
2:00- 4:00 Pay Fees and Complete Classification.
- 

Thursday, Sept. 16

- 8:00- 9:00 Division Convocation—Demonstration Hall.
9:00-10:00 Dean's Hour—Demonstration Hall.
10:00-12:00 Military Uniform—Demonstration Hall.
2:00- 2:30 Library Trip—Sec. 22, 23.
2:00- 2:30 Photograph, Sec. 24, 25—Beaumont Tower.
2:30- 3:00 Photograph, Sec. 22, 23—Beaumont Tower.
2:30- 3:00 Library Trip, Sec. 24, 25.
4:00 Medical Exam. (Women)—College Hospital.

Friday, Sept. 17

- 10:00-10:30 Photograph, Sec. 21—Beaumont Tower.
10:30-11:00 Library Trip, Sec. 21.
1:00- 2:00 Psychological Test—206 Hort. Bldg.
2:00- 3:00 President's Convocation—Demonstration Hall.
3:00- 4:00 Convocation (Men)—Demonstration Hall.
3:00- 4:00 Convocation (Women)—122 Kedzie Chem. Lab.

Saturday, Sept. 18

- 10:00 Medical Exam. (Men)—College Hospital.
10:00-12:00 Physical Exam. (Women)—West Wing Gym.

GROUP VI (Liberal Arts)**Sections 26, 27, 28, 29, 30****Tuesday, Sept. 14**

- 1:00- 2:00 Convocation—Demonstration Hall.
2:00- 3:00 English Test—122 Kedzie Chem. Lab.
3:00- 4:00 Reading Test—122 Kedzie Chem. Lab.

Wednesday, Sept. 15

- 9:30-10:00 Register—109 Agricultural Hall.
10:00- 3:00 See Adviser and Classify.
3:00- 5:00 Pay Fees and Complete Classification.

Thursday, Sept. 16

- 8:00- 9:00 Division Convocation—Demonstration Hall.
9:00-10:00 Dean's Hour—Demonstration Hall.
10:00-12:00 Military Uniform—Demonstration Hall.
1:00 Medical Exam. (Women)—College Hospital.
3:00- 5:00 Physical Exam. (Women)—West Wing Gym.

Friday, Sept. 17

- 10:00-10:30 Photograph, Sec. 30—Beaumont Tower.
10:30-11:00 Library Trip, Sec. 30.
11:00-11:30 Photograph, Sec. 26, 27—Beaumont Tower.
11:00-11:30 Library Trip, Sec. 28, 29.
11:30-12:00 Library Trip, Sec. 26, 27.
11:30-12:00 Photograph, Sec. 28, 29—Beaumont Tower.
1:00- 2:00 Psychological Test—122 Kedzie Chem. Lab.
2:00- 3:00 President's Convocation—Demonstration Hall.
3:00- 4:00 Convocation (Men)—Demonstration Hall.
3:00- 4:00 Convocation (Women)—122 Kedzie Chem. Lab.

Saturday, Sept. 18

- 8:00- 9:00 Medical Exam. (Men)—College Hospital.

GROUP VII (Liberal Arts)

Sections 31, 32, 33, 34, 35

Tuesday, Sept. 14

- 1:00- 2:00 General Convocation—Demonstration Hall.
2:00- 3:00 English Test—122 Kedzie Chem. Lab.
3:00- 4:00 Reading Test—122 Kedzie Chem. Lab.

Wednesday, Sept. 15

- 8:00-10:00 See Adviser.
10:00-10:30 Register—109 Agricultural Hall.
10:30- 4:00 See Adviser and Classify.
4:00- 6:00 Pay Fees and Complete Classification.

Thursday, Sept. 16

- 8:00- 9:00 Division Convocation—Demonstration Hall.
9:00-10:00 Dean's Hour—Demonstration Hall.
10:00-10:30 Photograph, Sec. 31, 32—Beaumont Tower.
10:00-10:30 Library Trip, Sec. 33, 34.
10:30-11:00 Library Trip, Sec. 31, 32.
10:30-11:00 Photograph, Sec. 33, 34—Beaumont Tower.
1:00- 2:00 Medical Exam. (Women)—College Hospital.
3:00- 3:30 Photograph, Sec. 35—Beaumont Tower.
3:30- 4:00 Library Trip, Sec. 35.

Friday, Sept. 17

- 1:00- 2:00 Psychological Test—122 Kedzie Chem. Lab.
2:00- 3:00 President's Convocation—Demonstration Hall.
3:00- 4:00 Convocation (Men)—Demonstration Hall.
3:00- 4:00 Convocation (Women)—122 Kedzie Chem. Lab.
4:00- 6:00 Military Uniform—Demonstration Hall.

Saturday, Sept. 18

- 8:00-10:00 Physical Exam. (Women)—West Wing Gym.
11:00 Medical Exam. (Men)—College Hospital.

GROUP VIII (Home Economics)**Sections 36, 37, 38, 39****Tuesday, Sept. 14**

- 1:00- 2:00 Convocation—Demonstration Hall.
2:00- 3:00 English Test—101 Home Economics Bldg.
3:00- 4:00 Reading Test—101 Home Economics Bldg.

Wednesday, Sept. 15

- 8:00-10:00 Physical Examination, Sec. 36, 37—West Wing Gym.
8:00- 9:00 See Adviser, Sec. 38, 39.
9:00- 9:30 Photograph, Sec. 38, 39—Beaumont Tower.
9:30-10:00 Library Trip, Sec. 38, 39.
10:00-12:00 Physical Exam., Sec. 38, 39—West Wing Gym.
10:00-11:00 See Adviser, Sec. 36, 37.
11:00-11:30 Photograph, Sec. 36, 37—Beaumont Tower.
11:30-12:00 Library Trip, Sec. 36, 37.
1:00- 1:30 Register—109 Agricultural Hall.
2:00- 6:00 See Adviser and Classify.
7:00 Medical Exam. (Women)—College Hospital.

Thursday, Sept. 16

- 8:00-10:00 Pay Fees and Complete Classification.
1:00- 2:00 Division Convocation—206 Hort. Bldg.
2:00- 3:00 Dean's Hour—206 Hort. Bldg.

Friday, Sept. 17

- 1:00- 2:00 Psychological Test—101 Home Economics Bldg.
2:00- 3:00 President's Convocation—Demonstration Hall.
3:00- 4:00 Convocation (Women)—206 Hort. Bldg.

GROUP IX (Home Economics)**Sections 40, 41, 42, 43****Tuesday, Sept. 14**

- 1:00- 2:00 Convocation—Demonstration Hall.
2:00- 3:00 English Test—
 Sections 40, 41—101 Home Economics Bldg.
 Sections 42, 43— 1 Home Economics Bldg.
3:00- 4:00 Reading Test—
 Sections 40, 41—101 Home Economics Bldg.
 Sections 42, 43— 1 Home Economics Bldg.

Wednesday, Sept. 15

- 8:00-12:00 See Adviser and Classify.
1:30- 2:00 Register—109 Agricultural Hall.
2:00- 2:30 Library Trip, Sec. 40, 41.
2:00- 2:30 Photograph, Sec. 42, 43—Beaumont Tower.
2:30- 3:00 Photograph, Sec. 40, 41—Beaumont Tower.
2:30- 3:00 Library Trip, Sec. 42, 43.
4:00 Medical Exam. (Women)—College Hospital.

Thursday, Sept. 16

- 9:00-11:00 Pay Fees and Complete Classification.
1:00- 2:00 Division Convocation—206 Hort. Bldg.
2:00- 3:00 Dean's Hour—206 Hort. Bldg.

Friday, Sept. 17

- 8:00-10:00 Physical Examination, Sec. 40, 41, (Women)—
 West Wing Gym.
10:00-12:00 Physical Examination, Sec. 42, 43, (Women)—
 West Wing Gym.
1:00- 2:00 Psychological Test—
 Sections 40, 41—101 Home Economics Bldg.
 Sections 42, 43— 1 Home Economics Bldg.
2:00- 3:00 President's Convocation—Demonstration Hall.
3:00- 4:00 Convocation (Women)—206 Hort. Bldg.

GROUP X (Applied Science)**Sections 44, 45, 46, 47, 48****Tuesday, Sept. 14**

- 1:00- 2:00 Convocation—Demonstration Hall.
2:00- 3:00 English Test—101 Physics Bldg.
3:00- 4:00 Reading Test—101 Physics Bldg.

Wednesday, Sept. 15

- 8:00-10:00 See Adviser.
10:00-10:30 Library Trip, Sec. 47, 48.
10:30-11:00 Photograph, Sec. 47, 48—Beaumont Tower.
11:30-12:00 Register—109 Agricultural Hall.
1:00- 1:30 Library Trip, Sec. 44, 45, 46.
1:30- 2:00 Photograph, Sec. 44, 45, 46—Beaumont Tower.
2:00- 4:00 Physical Examination (Women)—West Wing
Gym.
7:30 Medical Examination (Women)—Hospital.

Thursday, Sept. 16

- 8:00- 9:00 Division Convocation—122 Kedzie Chem. Lab.
9:00-10:00 Dean's Hour—122 Kedzie Chem. Lab.
10:00-12:00 Pay Fees and Complete Classification.

Friday, Sept. 17

- 8:00 Medical Examination (Men)—College Hospital.
1:00- 2:00 Psychological Test—101 Physics Bldg.
2:00- 3:00 President's Convocation—Demonstration Hall.
3:00- 4:00 Convocation (Men)—Demonstration Hall.
3:00- 4:00 Convocation (Women)—122 Kedzie Chem. Lab.

Saturday, Sept. 18

- 9:00-11:00 Military Uniform—Demonstration Hall.

GROUP XI (Applied Science)

Sections 49, 50, 51, 52, 53, 54

Tuesday, Sept. 14

- 1:00- 2:00 Convocation—Demonstration Hall.
2:00- 3:00 English Test—101 Physics Bldg.
3:00- 4:00 Reading Test—101 Physics Bldg.

Wednesday, Sept. 15

- 8:00-10:30 See Adviser and Classify.
10:30-11:30 Register—109 Agricultural Hall.
11:00-11:30 Library Trip, Sec. 49, 50, 51.
11:30-12:00 Photograph, Sec. 49, 50, 51—Beaumont Tower.
1:00- 1:30 Photograph, Sec. 52, 53, 54—Beaumont Tower.
1:30- 2:00 Library Trip, Sec. 52, 53, 54.
2:00- 4:00 Physical Exam. (Women)—West Wing Gym.
7:30 Medical Exam. (Women)—College Hospital.

Thursday, Sept. 16

- 8:00- 9:00 Division Convocation—122 Kedzie Chem. Lab.
9:00-10:00 Dean's Hour—122 Kedzie Chem. Lab.
11:00- 2:00 Pay Fees and Complete Classification.

Friday, Sept. 17

- 8:00 Medical Exam. (Men)—College Hospital.
10:00-12:00 Military Uniform—Demonstration Hall.
1:00- 2:00 Psychological Test—101 Physics Bldg.
2:00- 3:00 President's Convocation—Demonstration Hall.
3:00- 4:00 Convocation (Men)—Demonstration Hall.
3:00- 4:00 Convocation (Women)—122 Kedzie Chem. Lab.

*9 Merrill Hall***GROUP XII (Applied Science)****Sections 55, 56, 57, 58, 59, 60****Tuesday, Sept. 14**

- ✓ 1:00- 2:00 Convocation—Demonstration Hall.
- ✓ 2:00- 3:00 English Test—101 Physics Bldg.
- ✓ 3:00- 4:00 Reading Test—101 Physics Bldg.

Wednesday, Sept. 15

- 8:00- 9:00 See Adviser.
- ✓ 9:00- 9:30 Library Trip, Sec. 55, 56, 57. ✓
- 9:30-10:00 Photograph, Sec. 58, 59, 60—Beaumont Tower.
- ✓ 10:00-10:30 Photograph, Sec. 55, 56, 57—Beaumont Tower.
- 10:30-11:00 Library Trip, Sec. 58, 59, 60.
- ✓ 11:00-11:30 Register—109 Agricultural Hall. ✓
- 2:00- 4:00 Physical Exam. (Women)—West Wing Gym.
- 7:30 Medical Exam. (Women)—College Hospital.

*2:00**advised**1:00- 2:00**advised***Thursday, Sept. 16**

- ✓ 8:00- 9:00 Division Convocation—122 Kedzie Chem. Lab.
- ✓ 9:00-10:00 Dean's Hour—122 Kedzie Chem. Lab.
- ✓ 10:00 Medical Examination (Men)—College Hospital. ✓
- ✓ 1:00- 3:00 Pay Fees and Complete Classification.

Friday, Sept. 17

- 8:00-10:00 Military Uniform—Demonstration Hall. ✓
- ✓ 1:00- 2:00 Psychological Test—101 Physics Bldg.
- 2:00- 3:00 President's Convocation—Demonstration Hall. ✓
- 3:00- 4:00 Convocation (Men)—Demonstration Hall. ✓
- 3:00- 4:00 Convocation (Women)—122 Kedzie Chem. Lab.

*Wed + Thurs 4-5 206 3rd floor
Couch make up exam.*

GROUP XIII (Veterinary)

Sections 61, 62, 63

Tuesday, Sept. 14

- 1:00- 2:00 Convocation—Demonstration Hall.
- 2:00- 3:00 English Test—206 Hort. Bldg.
- 3:00- 4:00 Reading Test—206 Hort. Bldg.

Wednesday, Sept. 15

- 8:00- 9:00 See Adviser.
- 9:00 Medical Examination (Men)—College Hospital.
- 1:00- 2:00 Physical Examination (Women)—West Wing Gym.
- 2:00- 3:00 Register—109 Agricultural Hall.
- 3:00- 3:30 Library Trip, Sec. 61, 62.
- 3:00- 3:30 Photograph, Sec. 63—Beaumont Tower.
- 3:30- 4:00 Photograph, Sec. 61, 62—Beaumont Tower.
- 3:30- 4:00 Library Trip, Sec. 63.
- 4:00 Medical Examination (Women)—College Hospital.

Thursday, Sept. 16

- 8:00- 9:00 Division Convocation—109 Agricultural Hall.
- 9:00-10:00 Dean's Hour—109 Agricultural Hall.
- 10:00-12:00 See Adviser and Classify.
- 2:00- 4:00 Pay Fees and Complete Classification.

Friday, Sept. 17

- 9:00-11:00 Military Uniform—Demonstration Hall.
- 1:00- 2:00 Psychological Test—206 Hort. Bldg.
- 2:00- 3:00 President's Convocation—Demonstration Hall.
- 3:00- 4:00 Convocation (Men)—Demonstration Hall.
- 3:00- 4:00 Convocation (Women)—206 Hort. Bldg.

GROUP XIV (Agriculture)**Sections 64, 65, 66, 67, 68****Tuesday, Sept. 14**

- 1:00- 2:00 Convocation—Demonstration Hall.
2:00- 3:00 English Test—206 Agricultural Hall.
3:00- 4:00 Reading Test—206 Agricultural Hall.

Wednesday, Sept. 15

- 8:00 Medical Exam. (Men)—College Hospital.
10:00-12:00 See Adviser.
1:00- 2:00 Physical Exam. (Women)—West Wing Gym.
2:30- 3:00 Register—109 Agricultural Hall.
3:00- 3:30 Photograph, Sec. 64—Beaumont Tower.
3:30- 4:00 Library Trip, Sec. 64.
5:00 Medical Exam. (Women)—College Hospital.

Thursday, Sept. 16

- 8:00- 9:00 Division Convocation—206 Hort. Bldg.
9:00-10:00 Dean's Hour—206 Hort. Bldg.
1:00- 3:00 See Adviser.
3:00- 5:00 Pay Fees and Complete Classification.

Friday, Sept. 17

- 8:00- 8:30 Photograph, Sec. 65, 66—Beaumont Tower.
8:00- 8:30 Library Trip, Sec. 67, 68.
9:00- 9:30 Library Trip, Sec. 65, 66.
9:00- 9:30 Photograph, Sec. 67, 68—Beaumont Tower.
1:00- 2:00 Psychological Test—206 Agricultural Hall.
2:00- 3:00 President's Convocation—Demonstration Hall.
3:00- 4:00 Convocation (Men)—Demonstration Hall.
3:00- 4:00 Convocation (Women)—206 Hort. Bldg.

Saturday, Sept. 18

- 8:00-10:00 Military Uniform—Demonstration Hall.

GROUP XV (Agriculture)**Sections 69, 70, 71, 72, 73, 74****Tuesday, Sept. 14**

- 1:00- 2:00 Convocation—Demonstration Hall.
2:00- 3:00 English Test—
 Sec. 69, 70, 71—100 Agricultural Hall.
 Sec. 72, 73, 74—101 Agricultural Hall.
3:00- 4:00 Reading Test—
 Sec. 69, 70, 71—100 Agricultural Hall.
 Sec. 72, 73, 74—101 Agricultural Hall.

Wednesday, Sept. 15

- 8:00-10:00 See Adviser.
10:00 Medical Exam. (Men)—College Hospital.
1:00- 2:00 Physical Exam. (Women)—West Wing Gym.
3:00- 3:30 Register—109 Agricultural Hall.
5:00 Medical Exam. (Women)—College Hospital.

Thursday, Sept. 16

- 8:00- 9:00 Division Convocation—206 Hort. Bldg.
9:00-10:00 Dean's Hour—206 Hort. Bldg.
1:00- 4:00 See Adviser.
4:00- 6:00 Pay Fees and Complete Classification.

Friday, Sept. 17

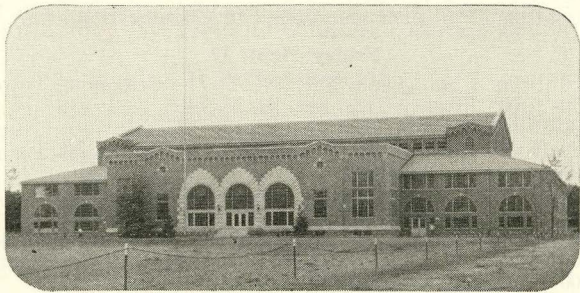
- 8:30- 9:00 Photograph, Sec. 69, 70, 71—Beaumont Tower.
8:30- 9:00 Library Trip, Sec. 72, 73, 74.
9:30-10:00 Library Trip, Sec. 69, 70, 71.
9:30-10:00 Photograph, Sec. 72, 73, 74—Beaumont Tower.
1:00- 2:00 Psychological Test—
 Sec. 69, 70, 71—100 Agricultural Hall.
 Sec. 72, 73, 74—101 Agricultural Hall.
2:00- 3:00 President's Convocation—Demonstration Hall.
3:00- 4:00 Convocation (Men)—Demonstration Hall.
3:00- 4:00 Convocation (Women)—206 Hort. Bldg.

Saturday, Sept. 18

- 10:00-12:00 Military Uniform—Demonstration Hall.

DIRECTIONS FOR TRANSFER STUDENTS

1. You have been assigned to a group according to the division in which you are to enroll. The programs for the various groups are given on the following pages. Please follow exactly the program of your group.
2. Any transfer student enrolling in freshman English must take the English placement test before enrolling. This is given Tuesday from 2:00 to 3:00 p. m. See schedule for regular freshmen and go to the room specified for your division.
3. All students entering the music department curricula or the Liberal Arts division with a major in music, must have entrance examinations both in their major instrument or voice and in their general musical ability. These examinations must be completed before enrollment is made. For dates see page 16.
4. Every freshman will register for at least one Saturday class, unless his adviser has given him in writing an exemption from this requirement.



Demonstration hall is the location for many Michigan State events.

35
39

10 Right 20 Medium 5 Heavy
19 20 Medium

TRANSFERS

GROUP A (Engineers)

Tuesday, Sept. 14

- 1:00- 2:00 Convocation—Demonstration Hall.
2:00- 2:30 Register—109 Agricultural Hall.
2:30- 5:00 See Dean—101 Olds Hall.

Wednesday, Sept. 15

- 8:00-10:00 Pay Fees and Complete Classification.

Thursday, Sept. 16

- 8:00 Medical Exam. (Men)—College Hospital.
1:00- 2:00 Division Convocation—111 Olds Hall.
2:00- 3:00 Dean's Hour—111 Olds Hall.
3:30- 4:00 Photograph—Beaumont Tower.

Friday, Sept. 17

- 1:00- 2:00 Psychological Test—111 Olds Hall.
2:00- 3:00 President's Convocation—Demonstration Hall.
3:00- 5:00 Military Uniform—Demonstration Hall.


TRANSFERS

GROUP B (Liberal Arts)

Tuesday, Sept. 14

- 1:00- 2:00 Convocation—Demonstration Hall.
2:30- 3:00 Register—109 Agricultural Hall.
3:00- 6:00 See Dean or Adviser.

Wednesday, Sept. 15

- 8:00-10:00 Pay Fees and Complete Classification.
- 

Thursday, Sept. 16

- 8:00- 9:00 Division Convocation—Demonstration Hall.
9:00-10:00 Dean's Hour—Demonstration Hall.
2:00 Medical Exam. (Women)—College Hospital.
4:00- 5:00 Photograph—Beaumont Tower.

Friday, Sept. 17

- 10:00 Medical Exam. (Women)—College Hospital.
1:00- 2:00 Psychological Test—109 Agricultural Hall.
2:00- 3:00 President's Convocation—Demonstration Hall.
3:00- 5:00 Military Uniform—Demonstration Hall.


TRANSFERS

GROUP C (Home Economics)

Tuesday, Sept. 14

- 1:00- 2:00 Convocation—Demonstration Hall.
2:00- 3:00 See Adviser—2 Home Economics Bldg.
3:00- 3:30 Register—109 Agricultural Hall.
3:30- 5:00 See Dean or Adviser.

Wednesday, Sept. 15

- 8:00-10:00 Pay Fees and Complete Classification.
- 

Thursday, Sept. 16

- 1:00- 2:00 Division Convocation—206 Hort. Bldg.
2:00- 3:00 Dean's Hour—206 Hort. Bldg.
5:00 Medical Exam. (Women)—College Hospital.

Friday, Sept. 17

- 1:00- 2:00 Psychological Test—1 Liberal Arts Bldg.
2:00- 3:00 President's Convocation—Demonstration Hall.
3:00- 3:30 Photograph—Beaumont Tower.


TRANSFERS

GROUP D (Applied Science)

Tuesday, Sept. 14

- 1:00- 2:00 Convocation—Demonstration Hall.
- 2:00- 3:00 See Dean or Adviser—200 Kedzie Lab.
- 3:00- 3:30 Register—109 Agricultural Hall.
- 3:30- 5:00 See Dean or Adviser.

Wednesday, Sept. 15

- 8:00-10:00 Pay Fees and Complete Classification.
- 

Thursday, Sept. 16

- 8:00- 9:00 Division Convocation—122 Kedzie Chem. Lab.
- 9:00-10:00 Dean's Hour—122 Kedzie Chem. Lab.
- 1:00- 2:00 Military Uniform—Demonstration Hall.
- 3:00 Medical Exam. (Women)—College Hospital.

Friday, Sept. 17

- 1:00- 2:00 Psychological Test—107 Physics Bldg.
- 2:00- 3:00 President's Convocation—Demonstration Hall.
- 3:30- 4:00 Photograph—Beaumont Tower.

Saturday, Sept. 18

- 9:00 Medical Exam. (Men)—College Hospital.

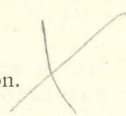
TRANSFERS

GROUP E (Veterinary and Medical Biology)

Tuesday, Sept. 14

- 1:00- 2:00 Convocation—Demonstration Hall.
2:00- 2:30—Register—109 Agricultural Hall.
2:30- 5:00 See Dean—12 Bact. Lab.

Wednesday, Sept. 15

- 8:00-10:00 Pay Fees and Complete Classification.
- 

Thursday, Sept. 16

- 8:00- 9:00 Division Convocation—109 Agricultural Hall.
9:00-10:00 Dean's Hour—109 Agricultural Hall.
3:00 Medical Exam. (Women)—College Hospital.
5:00- 5:30 Photograph—Beaumont Tower.

Friday, Sept. 17

- 11:00 Medical Examination (Men)—College Hospital.
1:00- 2:00 Psychological Test—27 Forestry Bldg.
2:00- 3:00 President's Convocation—Demonstration Hall.
3:00- 5:00 Military Uniform—Demonstration Hall.

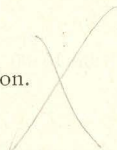
TRANSFERS

GROUP F (Agriculture)

Tuesday, Sept. 14

- 1:00- 2:00 Convocation—Demonstration Hall.
- 2:00- 3:30 Classify—316 Agricultural Hall.
- 3:30- 4:00 Register—109 Agricultural Hall.
- 4:00- 6:00 Classify—316 Agricultural Hall.

Wednesday, Sept. 15

- 8:00-10:00 Pay Fees and Complete Classification.
- 

Thursday, Sept. 16

- 8:00- 9:00 Division Convocation—206 Hort. Bldg.
- 9:00-10:00 Dean's Hour—206 Hort. Bldg.
- 1:00- 2:00 Military Uniform—Demonstration Hall.
- 3:00 Medical Exam, (Women)—College Hospital.

Friday, Sept. 17

- 9:00 Medical Exam. (Men)—College Hospital.
- 1:00- 2:00 Psychological Test—Botany Lecture Room.
- 2:00- 3:00 President's Convocation—Demonstration Hall.
- 4:00- 4:30 Photograph—Beaumont Tower.

SOCIAL EVENTS

(Freshman women must be in dormitories at 11 p. m., during Freshman Week.)

Tuesday, September 14—

College Reception for Women, 7:30 to 8:30 p. m.—Williams Hall.

Freshman Women Counselor Hour, 9:00 p. m.-10:00 p. m. (Counselors will call upon women assigned to them and women are asked to be in their rooms during the period of this interview.)

Wednesday, September 15—

Informal Coffee for Freshman Women, 7:30 to 8:30 p. m., Peoples Church, under the auspices of the Y. W. C. A.*

Thursday, September 16—

Student Mixer, 8:00 to 10:45 p. m., Peoples Church, under auspices of Y. W. C. A. and Y. M. C. A.

Every new student is invited.*

Friday, September 17—8:00 p. m.—Union Building.

The Michigan State Inter-Fraternity Council Smoker for all new men students interested in fraternities.

Friday, September 17—

House Entertainment for Freshman Women in Dormitories, 9:00 to 10:00 p. m.

Student Grange Mixer, 8:00 p. m., Little Theatre, Home Economics Building. All Agricultural and Home Economics Freshmen and others interested in 4-H Club work are invited.

Saturday, September 18—

Hike for all Freshman women, 8:30 a. m. Meet at Gymnasium and hike to the W. A. A. Cabin for breakfast.

Union dance, 9:00 to 12:00 p. m., Union Ballroom, Union Building.

Sunday, September 19—

Tower Guard Tea for all new women students, who are regular residents of Lansing and East Lansing, 3:30 to 5:00 p. m., West Mary Mayo.

*Appointments for examinations take precedence.

The College---

Rules and Regulations

REGISTRATION

1. **TIME OF REGISTRATION.** In the fall term of 1937, freshmen and transfer students will begin registration Tuesday, Sept. 14. Former students will register Friday, and Saturday, Sept. 17 and 18.

2. **DROPPING A SUBJECT, OR CHANGES IN REGISTRATION.** No changes in classification are permitted unless authorized by the students' class adviser or dean, and the Registrar. A student cannot drop a subject except upon a written recommendation of the head of the department concerned and the approval of his adviser. In case such permission is granted and the subject is dropped before the close of the first four weeks (five weeks for the first term of attendance at college) of the term, no grade will be reported; after that time a grade of "F" will be reported in the subject, except in the case of illness when the grade of "Inc." or "N" (no grade), will be recommended. Attendance in the class should be continued until the drop has been recorded by the Registrar.

3. **ENROLLMENT CARDS.** Students may be admitted to classes only by an enrollment card. Credit will not be granted to any student who enters a class without having been properly registered in the subject.

4. **CLASS ADVISER.** Each student is placed under the immediate charge of a member of the faculty who is his adviser. The student reports to him for assignment to classes, and consults with him for advice and direction in matters pertaining to college work.

5. **PREREQUISITES.** Two conditions, (X), or one failure, (F), in prerequisite work for any subject excludes the student from that subject. The term-end grade in any subject is the determining grade in ascertaining the eligibility of a student for advanced work.

6. **PROMOTION TO HIGHER CLASS.** Promotion from one class to another will be made when the total credits earned are not more than eight less than the number required to complete the year of the course in which the student is registered, except that promotion from one class to another will not be made in the spring term.

7. **CHANGE IN DIVISION.** A student changing from one division to another may not be deficient in more than 16 points and must obtain the authorization of both the Dean of the Division in which he has been enrolled and the Dean of the Division which he wishes to enter. He must obtain a transcript of his credits from the Registrar to be presented to the dean of the division in which he wishes to enroll. Changes will not be permitted except at the opening of a term.

8. **LATE REGISTRATION.** Students, registering after the regular registration date are required to pay for the first day of tardiness a fee of \$3, and an additional fee of \$1 per day up to the limit of \$5. Students will not ordinarily be admitted to any of the four-year courses or to any classes later than Monday of the second week of the term.

9. **ADMISSION WITH DEFICIENCY.** When a student is permitted to enter with deficiencies in required entrance subjects, such deficiencies must be made up during the first year of attendance in college.

STUDIES AND CREDITS

1. **CREDITS PER TERM.** With the exception of fixed courses which may require more, any number of credits above $17\frac{1}{2}$ per term will be considered as excess. The minimum number of credits permitted is 12 and the maximum is 20, at the discretion of the dean.

2. **EXCESS CREDITS.** An adviser may enroll a student in excess credits or in reduced credits subject to the approval of the dean of the division, or a divisional committee. No student may register for extra credits in any term unless the points earned during the preceding term exceed by one-half the number of credits carried.

3. **SENIOR CREDITS FOR SPRING TERM.** Seniors whose points for winter term meet the requirements, may register in not to exceed twenty credits in the spring term. All incompletes and conditions in necessary work are included as a part of the spring term work unless made up not later than the opening week of that term.

4. **MINIMUM CREDITS REQUIRED.** A student must spend at least one year in residence at this college and earn not fewer than fifty credits of satisfactory grade before a bachelor's degree may be granted.

5. **TO REPEAT A COURSE.** A student desiring to repeat a course in which he has already received credit may do so with the understanding that the last grade received will be the final grade, and that no additional credit will be given.

6. **VISITORS IN CLASSES.** Matriculated students are not permitted to enter classes as visitors unless authorized by the adviser and Registrar. Credit will not be granted for work taken as a visitor, either by special examination or by back registration.

GRADES

1. **CLASS GRADES.** The class work of a student will be rated as follows: "A", excellent; "B", superior; "C", average; "D", inferior; "X", condition; "F", failure; "Inc.", incomplete.

The grade of "Inc." will be given only upon the approval of the dean of the division when a student is prevented by illness from completing his work.

2. **POINTS.** In connection with the grading scheme, a system of points has been adopted. In all courses, points equal to the number of credits earned are required for graduation.

The number of points per credit for the various marks follows:

- "A"—3 points per credit
- "B"—2 points per credit
- "C"—1 point per credit
- "D"—0 points per credit
- "X"—1 negative point per credit
- "F"—1 negative point per credit

3. **TO REMOVE "F", "X", or "Inc.",** (See under Examinations).

EXAMINATIONS

1. ENTRANCE EXAMINATIONS. Examinations for entrance requirements, when necessary, may be taken either during the week preceding the opening of college, or the week following the close of the college year.

2. SPECIAL EXAMINATIONS TO REMOVE CONDITIONS OR INCOMPLETES. Students receiving conditions, (X), have the privilege of taking a special examination in the subject, provided such examination is taken before the opening of the corresponding term of the next year in which the student is in attendance.

Subject to regulations stated, special examinations to remove conditions may be taken only during the first week of any term. Examinations to remove the grade of incomplete may be taken at any time during the year satisfactory to the instructor.

Students receiving incompletes, (Inc.), must complete their work within a year if in residence, or the grade becomes a failure.

Students receiving a failure, (F), and those not removing their conditions or incompletes by the above mentioned method may receive credit only by repeating the subject in class, or by a special faculty authorization for a special examination.

The fee for special examination to remove deficiencies is \$1, payable at the Treasurer's office. Permits must first be obtained at the Registrar's office.

3. EXAMINATIONS FOR ADVANCED STANDING. Students applying for special examinations for advanced credits shall obtain the written approval of the head of the department and the dean of the division in which the work is given before applying to the Registrar for the necessary permit. Such examinations are given only during the first week of a term.

4. SPECIAL EXAMINATION FOR THOSE NOT IN RESIDENCE. Examinations may be given to persons not in residence, but who are regularly matriculated, upon the payment of the fee of \$2.50 per credit.

5. EXAMINATIONS FOR SENIORS. In their final

term, seniors are excused from examination in any subject in which a grade of "B" has been maintained throughout the term.

6. **REGULAR EXAMINATIONS.** Examinations are given at the close of each term in all subjects offered except for a few laboratory courses in which examination is not required.

WITHDRAWALS

1. **VOLUNTARY WITHDRAWAL FROM COLLEGE.** A student voluntarily withdrawing from college should first obtain from the dean of his division written permission. This he presents to the Registrar. He may then be entitled to a refund of fees under the regulations outlined in the Catalog. Permission should also be obtained from the Dean of Women or Dean of Men.

Students withdrawing without notification will be reported as having failed in work for that term.

In case of voluntary withdrawal from college before the close of the first eight weeks of the term, no grade will be reported. After that time the grade of incomplete, (Inc.), will be given in subjects in which the work was satisfactory, in others a grade of "F".

2. **WITHDRAWALS FROM ANY CLASS.** (See under Registration.)

3. **REQUESTS TO WITHDRAW.** A student whose work proves unsatisfactory may be warned, placed on probation, or requested to withdraw from College. If placed on probation, he is not permitted to participate in extra-curricular activities. (See under Eligibility.)

ATTENDANCE

It is expected that students will be in attendance at every class period.

The acceptance of an excuse for any absence rests with the instructor and department concerned. It is expected that in so far as possible, departments will arrange for

make-up work in cases where acceptable excuses are presented.

A student who for illness or other satisfactory reason has been absent from any given class not more than 25 per cent of the class periods throughout the term may be given an "Incomplete" if in the opinion of the instructor his work has been satisfactory and if the back work can be made up, otherwise "N" (No grade) shall be given. If his work has not been satisfactory, a "Failure" shall be given. All students absent 25 per cent or more will be reported as having dropped the course with a grade of "F", except in case of illness or other satisfactory reason, when the grade may be either "N" or "F".

The Registrar will include the number of absences from each class with grades reported to parents or guardians.

All field trips involving the absence of students from other classes must be authorized by the Dean of the Division in which the course is given, previous to the time of departure.

RESIDENCE REQUIREMENTS FOR MEN

1. Students must room in houses approved by the housing director of Michigan State College.

2. Students will not be allowed to room in a house, except fraternity houses, where the owner or householder or duly authorized agent does not live.

3. Men and women students may not room in the same rooming house.

4. Students are expected to stay the entire term in rooms engaged for that period. Changes can be made only with the approval of the housing director of the College.

5. A householder shall not ask a student to leave his or her house without first consulting the housing director of the College.

6. No guest shall be lodged in a student's room at any time without the knowledge and consent of the householder.

7. To reserve a room, a deposit of \$5.00 shall be paid to the householder to apply on the last part of the room rent for the term.

8. Room rent shall be paid for at least one week in advance. Receipts shall be given by the householder. Any extra charges for vacation room rental must be arranged for at the beginning of the term.

9. Absolutely no intoxicating liquor and no gambling shall be allowed in approved houses.

10. No disorder will be permitted in rooms or halls at any time. Ungentlemanly conduct on the part of a student may be reported to the housing director's office.

11. Quiet hours shall be maintained after 8:30 p. m. each night except Friday and Saturday nights and after 11:00 p. m. on these nights. During these quiet hours there shall be no loud talking in rooms or halls and no use of musical instruments in a manner that may disturb other occupants of the house.

12. A student shall be held liable for any damage to his room and the furnishings in it other than that due to ordinary wear.

13. Care shall be exercised by the student to turn off lights, gas, and water when not in use.

14. Reasonable bathing facilities shall be provided for the student roomers.

Information

1. Room rents will be prepared in printed form and placed in the hands of all incoming students at the beginning of the school year.

2. It is suggested that all houses having four or more roomers be organized and a president elected the first Tuesday following the first week of a term. The president should be an upperclassman if possible and should hold office for one term.

It shall be his duty to maintain good order and good will among the house members, to report all cases of illness, and to discuss with the householder and students any maladjustments which may arise between students or between householder and students.

3. A copy of these rules shall be posted in each student's room and mailed to each new student when his credentials have been accepted.

RESIDENCE REQUIREMENTS FOR WOMEN

1. GENERAL REGULATIONS. By action of the State Board of Agriculture, governing body of the College, all undergraduate women students from out of town must be housed in college-supervised houses. Freshman women must live in dormitories. Students who are not planning to live in sorority houses should make reservations in the dormitories or consult the Dean of Women regarding other approved places of residence. Those women who are obliged to work for room and board must make special arrangements in advance at the office of the Dean of Women with regard to the homes in which they will live.

Application for room reservations should be made to the Housing Supervisor, care of the office of the Dean of Women. All dormitories are open to undergraduate women. Graduate women students may apply for residence if they care to comply with undergraduate regulations. Undergraduates will be given preference in the assignment of rooms.

Every application for dormitory accommodations should be accompanied by a \$10 deposit fee. This will not apply on the room rent, but will be held as a breakage fee and will be refunded at the close of the residence period subject to the regulations in the catalog, or it may be withdrawn by the student provided reservation is cancelled with the office of the Dean of Women on or before September 1.

2. THOSE WORKING FOR ROOM AND BOARD. Women students who wish to earn room and board by working in private families should obtain the address of the approved homes from the office of the Dean of Women. Any addresses not obtained from this source are accepted subject to approval of the Housing Supervisor. Twenty-six hours of service a week is considered as equivalent to payment of room and board.

3. WOMEN UNDER A. W. S. RULES. All women students are under the Associated Women Students' code of rules, except those residing with their own families or in the homes of relatives.

4. LIVING WITH RELATIVES. Women students liv-

ing with relatives are under the jurisdiction of those relatives, as are those students living with their own families in Lansing or East Lansing.

5. **CONTRACTS.** By action of the State Board of Agriculture, women registering for rooms in dormitories will be expected to continue their residence in the dormitory for the college year. Off-campus room contracts are by the term.

Students who find it necessary to make a change of residence should apply for a permit at the office of the Dean of Women. Release from the contract will be by action of the Housing Committee.

6. **LIVING CONDITIONS.** Any unsatisfactory living conditions should be promptly referred to the office of the Dean of Women.

7. **FRESHMAN WOMEN AND SORORITY HOUSES.** No freshman woman may live in a sorority house. First-term transfer students above the rank of freshman may obtain a special permit for sorority house residence when they are ready for initiation.

HEALTH SERVICE

1. **THE ORGANIZATION.** The Michigan State College Health Service is equipped to safeguard carefully the health of the students of the college. The College Hospital with a capacity of 40 beds and a dispensary is directed by Dr. R. M. Olin, assisted by a competent staff of physicians and nurses. Students fees cover free care for 60 days in the College Hospital, and every student is entitled to unlimited advice and treatment at the dispensary, and a medical examination by appointment. A fee is charged, however, when it is necessary for the college physician to call at the student's room, the rate being \$2 for a call between 7 a. m. and 7 p. m. and \$3 for a call between 7 p. m. and 7 a. m.

Consultation with outside physicians, surgery and its attendant expense, and outside hospital fee must be borne by the student.

Community health demands intelligent cooperation on the following points:

a. Students who are ill are not to be cared for in their lodging houses for more than 24 hours except with special permission granted by the Health Service.

b. All cases must be reported to the College Health Service within the first 24 hours of development of illness. If an outside physician is in charge, this fact should be stated.

c. The employment of outside physicians is to be discouraged because of the expense to the student and because the parents look to the College to protect the health of the students. If the student employs outside physicians, it is impossible for the College health authorities to keep track of epidemics which usually start with some simple ailments.

d. Students who have been cared for by an outside physician must report to the College Health Service when ready to return to classes.

2. HEALTH SERVICE HOURS. Although in case of emergencies the hospital is open day and night, regular hours at which students may go to the hospital for treatment are as follows: Regular days, 8:30-10:30 a. m., 2:00-4:00 p. m., Saturdays, 8:30-10:30 a. m., Sundays by appointment only.

PARTY RULES

1. SUPERVISORY COMMITTEE. The Social Committee of the faculty, composed of Dean L. C. Emmons, chairman; Dean Elisabeth Conrad, secretary; Deans Huston, Dye, and Mitchell; and two student representatives, has general supervision over all student social functions. Social functions promoted by fraternities, social clubs, or other recognized social groups should be pre-registered in the office of the Dean of Women. To do this, the social chairman of each group must go to the office of the Dean of Women at the beginning of each term not later than the third Wednesday, and fill out a written form giving the date of the proposed event and the hours desired. One week prior to the date as registered he shall add the names of those patrons who have accepted invitations for the evening.

2. **TIME FOR CLOSING PARTIES.** All parties during the fall and spring terms must close not later than 12:15 Friday night. Winter term dances must close at 12:30. All Saturday night dances close at 12:00. See detailed rulings in the handbook of Associated Women Students.

3. **FOR SPECIAL DANCES AND ENTERTAINMENTS.** Dances to be promoted by other groups than those noted in Section 1, or being given for profit, may be held only after the presentation of and favorable action on a petition to the committee. Such petition will receive action only when presented by an organization which is all-college in scope, and when accompanied by an estimated budget of receipts and expenses and a clear statement of the purpose for which the profits will be used.

CLOSING HOURS FOR MEETINGS, LECTURES, ETC.

The faculty requests that all committees and organizations holding Monday, Tuesday, Wednesday and Thursday evening meetings attended by students begin these meetings not later than 7:30 p. m. and close them not later than 9:00 p. m.

This request of the faculty applies to the lecture course, the concert course, basketball games, meetings called and lectures given by various scientific and departmental societies, and meetings of all honorary and social fraternities and sororities and all other societies.

RULES OF ELIGIBILITY FOR PARTICIPATION IN COLLEGE ACTIVITIES

Matters of eligibility are under the jurisdiction of a special faculty committee, whose duty it is to determine eligibility for participation in all college activities.

The following rules have been established:

1. No student who has conditions or failures in more than eight credits is eligible to participate in intercollegiate athletics.

(Note: Eligibility is based on the record of the student in the Registrar's office.)

2. No student who is deficient in more than 8 points is eligible to participate in intercollegiate athletics.

3. No student who is classified in less than 12 credits is eligible to participate in intercollegiate athletics.

4. No student who is on probation is eligible to participate in intercollegiate athletics.

5. The eligibility of a student transferring from one division to another shall be based upon his record in the first division at the time of transfer, and the complete record shall go with him until the end of the first term when all failures, conditions and points in arrears due to work not required or accepted by the new division shall be stricken from his record.

6. No student who participates in intercollegiate athletics and does not complete the work of that term shall be permitted to compete in the same sport thereafter until he shall have been in attendance one full term subsequent to his last participation.

7. No student shall participate in intercollegiate athletics until he shall have been in attendance in the college for one full collegiate year, exclusive of summer school.

8. All competition will be completed within the first nine terms in attendance after the student attains eligibility and competes in an intercollegiate contest. Competition in any one sport shall be limited to three seasons.

9. No student shall play in any game under an assumed name.

10. No student shall be permitted to play in any intercollegiate contest who receives any remuneration or pay, either directly or indirectly, for his services on the college team. No student shall participate in any intercollegiate contest who is not an amateur. No person who receives any compensation from the institution for services rendered by way of regular instruction shall be allowed to play on any team; but laboratory assistants or men holding analogous positions shall not be barred by this rule.

11. A subject repeated one or more times for credit shall be counted only once.

12. Rules 1, 2, 3, 4, 5, and 11 apply to the following college activities: (1) holding a class or college office, (2) service on student publications, (3) official connection with college functions such as Junior Hop, etc., (4) participation in dramatic or musical exhibitions and oratorical or debating contests.

The manager or chairman of every above activity shall submit to the Student Council and the Faculty Eligibility Committee, a complete list of all students who expect to participate in such activities and to ascertain their eligibility before proceeding with the activity in question.

No student may be accepted for part in any college activity until an official certificate of eligibility from the Faculty Eligibility Committee is filed with the officer in charge of the activity.

USE OF COLLEGE BUILDINGS

To avoid conflicts in the use of college buildings and to serve as a clearing house for all college activities, a special committee of the faculty assigns rooms on the campus to student or other groups desiring them for meetings, dances, and other occasions.

For the use of certain rooms in college buildings, a deposit of \$5 is required to guarantee any charges for damages, but this is returned if the building is found in good condition. The rooms for which fees are charged include: the Little Theatre, \$10.00; Demonstration Hall ballroom, \$20.00; Gymnasium annex, \$10.

Before any rooms may be used for anything but classroom routine, permission must be obtained from the office of Secretary J. A. Hannah.

TRAFFIC REGULATIONS

Speed limit on the Campus is 20 miles per hour. Parking lots located near the Chemistry Building, Woman's Building, Horticultural Building, and Abbot Hall are reserved for students.

A complete list of traffic regulations may be obtained at Police Headquarters on the Campus.

COLLEGE LOAN AND SCHOLARSHIP FUNDS

LOAN FUNDS. The College has a limited sum of money from various sources each year for loans to needy students. Due to the small amount of money available for this purpose, most of the loans are for short periods of time to tide students over some temporary emergency. In certain cases, however, loans are made to mature one year after the student leaves the institution.

PREFERENCE TO UPPERCLASSMEN. In granting loans preference is given to upperclassmen. In no case will a loan be granted to a student with an unsatisfactory scholarship record or to one who is under disciplinary action.

APPLYING FOR LOANS. Students who desire to obtain funds through a College loan should apply to Dr. Fred T. Mitchell, chairman of the faculty committee on student loans, at least two weeks before the money is needed. The office of the committee is in the Union Building, first floor.

SCHOLARSHIP FUNDS. Any student may compete for certain scholarships which the College has at its disposal. Most of the awards are made on a basis of excellence in scholarship, either general or in some specific line of work. The College catalog covers this subject completely.

MILITARY TRAINING

1. **REGULAR REQUIREMENTS.** Freshman and sophomore men are required to take courses in Military Science each term until all basic courses (numbered 101 to 206, inclusive) are passed.

2. **EXCUSES AND EXEMPTIONS.** Freshman and sophomore men are required to take courses in Military Science each term until all basic courses (numbered 101-206 inclusive) given have been completed, unless excused by the

Professor of Military Science. Normally excuses will be granted by him only in the classes shown below:

- (a) Aliens;
- (b) Any married man with one or more children;
- (c) Short course students;
- (d) Those found physically unfit by the College Health Service Physician;
- (e) Those who at the time of first registration have reached the age of 26 years;
- (f) Students transferring from other institutions with 92 or more credits which apply toward graduation or when they attain junior rating.

Note: Students whose entire course has been taken at Michigan State College must complete six terms of Military Science.

(g) Those having received equivalent training at the U. S. Military Academy, U. S. Naval Academy or in a senior R. O. T. C. unit;

(h) Those having received previous training in the following services on the basis indicated:

(1) Regular armed services such as the Army and Navy: One year excuse for each year service.

(2) National Guard: One term excuse for one year service.

(3) C. M. T. C.: One term excuse for one camp. One year excuse for two camps.

(4) Junior R. O. T. C.: One year excuse for two years junior R. O. T. C.

No student is eligible for the advanced course unless he has completed or has credit for the entire basic course.

Students excused under group (g) receive college credit for training indicated.

Students excused under groups (g) and (h) (4) are credited with the time indicated, as requisite for the Advanced Course.

3. BAND. Students who qualify may elect band to fulfill the military requirements for the first two years. The band tryouts will be held in Room 113, Abbot Hall, during Freshman Week from 10:00 to 12:00 on Wednesday, Thursday, Friday, and Saturday; and from 2:00 to 5:00 on Wednesday, Thursday, and Friday.

PHYSICAL EDUCATION

1. REQUIREMENTS FOR MEN. All Freshmen are required to take one year of physical education unless excused because of physical disability.

2. REQUIREMENTS FOR WOMEN. All women students must take two years of physical education unless excused because of physical disability.

3. EXCUSES. An excuse from Physical Education because of disability must come from the Health Service. A permit for postponement of Physical Education or Military Science for men must come from the faculty committee on Physical Education and Military Science; for women, a permit for postponement of Physical Education should be obtained from the faculty committee on Physical Education for Women.

4. SUBSTITUTION OF ACADEMIC CREDITS. If excused from Physical Education, the student must substitute academic credits in lieu of the Physical Education.

THE LIBRARY

1. HOURS. The Library will be open from 7:30 a. m. to 10:00 p. m. on week days and from 2:00 p. m. to 6:00 p. m. on Sundays.

2. MAIN CIRCULATION DESK. All books taken from this desk for home reading or for use in the main reading room should be properly charged.

Students must pay a fine of two cents a day, not including Sundays or holidays, for all books not returned to the main circulation desk two weeks from the date of borrowing. A fine of three cents a day is charged on over-due books designated for the limited circulation of one week or three days.

In case of lost books, the student borrower must pay the fine due plus the initial cost of the book to the Library. If the borrower does not adjust his delinquency to the satisfaction of the Librarian, the case is referred to the President as a violation of the state statute to protect public libraries.

3. MAIN READING ROOM. General reference books are placed in this room on open shelves while other books are kept for call. The reference librarians desk is located in this room.

4. ASSIGNED READING ROOM. On the first floor there is an assigned reading room where books are kept containing references which various instructors assign to their students.

Students may not take books from the assigned reading room without permission from the attendant; only one book at a time may be taken for reading in the room, and the book must be returned within two hours. Books may be taken out overnight after 9:30 p. m. (Sundays after 5:30 p. m.) and must be returned before 8:00 a. m. on the following morning, with the exception of books taken out Saturday evening, which must be returned on Sunday before 2:15 p. m. A fine of 25 cents per volume is charged for failure to return books by 8:00 a. m., or by 2:15 p. m. on Sundays. After 9:00 a. m., or 2:30 p. m. on Sundays, there is an additional fine of 10 cents per volume per day.

5. PERIODICAL ROOM. This room gives the student access to over 900 currently received periodicals. Bound sets are kept in the library stacks. Volumes from the bound periodical sets are obtainable through the main circulation desk.

6. NUMBER OF VOLUMES. The Michigan State College Library comprises over 126,000 volumes, including over 9,000 bound federal documents and more than 800 bound volumes of newspapers.



*Winter crowns the campus in ermine to inspire
poets and photographers.*

Student Activities

*Organizations and Their Relations
to the Student Body*

GOVERNMENT

THE STUDENT COUNCIL

The Student Council is an elective men's representative body which has jurisdiction over all student activities. The Council has the power to legislate concerning general student affairs and to investigate and make recommendations on all matters between the students and the College. In addition, the Council acts as the intermediary between the students and the faculty, bringing closer cooperation among the several groups.

The Council arranges and sponsors all student elections, controls and investigates activities of campus honoraries, and acts on all matters pertaining to the student body.

The Student Council for the coming year is composed of the following elected men: James Hayes, president; Howard Swartz, vice-president; Joe Ruhe, secretary-treasurer; Harry Speelman, senior representative; Frank Gaines, senior president; Clarence Dennis, junior representative; William Carpenter, junior president; George Gargett, sophomore representative; Theodore Mackrell, sophomore president.

The ex-officio members of the Council are: Nancy Farley, president of Associated Women Students; Norine Erwin, president of Spartan Womans League; Eileen McCurdy, president Panhellenic Council; Fred Arnold, president Independent Men's League; Art Freeman, president Interfraternity Council; Harry Speelman, president Varsity Club; Ola Gelzer, Editor of the State News; and the president of the freshman class elected in the fall term.

Meetings are held in the Union each Tuesday. Individuals desiring a hearing or having business to present to the Council are welcome to attend the meetings on Tuesday evenings at 7:30 p. m.

Dean Fred T. Mitchell is the Faculty Adviser for the Student Council.

LIMITATION OF ACTIVITIES

The Student Council has adopted a system, whereby any one student is limited in his participation in student activities.

Under this system, the positions, offices, and other activities that a student may hold or engage in are divided into four distinct groups, lettered for convenience: A+, A, B, and C. The positions listed under A+ pay a stipulated yearly salary to their holders. Students who hold these positions may not hold any other office on the campus.

There are four possible combinations of offices in the other three groups. An individual may hold one A and one C office; two B offices; one B and two C offices; or three C offices.

Enforcement of these regulations is in the hands of committee of the Student Council. This committee has the power to remove from office any student who has exceeded the stated number of positions possible in any combination.

The groupings are as follows:

THE A+ POSITIONS

Managing Editor, Michigan State News.
Associate Editor, Michigan State News.
Business Manager, Michigan State News.
Managing Editor, Wolverine.
Business Manager, Wolverine.

THE A POSITIONS

President, Student Council.

THE B POSITIONS

Member, Student Council.
Members of all publication staffs who are juniors.
Captains, managers, and members of all varsity athletic teams.
President, Union Board.
President, Interfraternity Council.

THE C POSITIONS

Cheerleader.
Captains, managers, and members of minor athletic teams.
Class officer, other than president.
President all honorary societies.
President, social fraternities.
Member, Union Board.

ASSOCIATED WOMEN STUDENTS

Associated Women Students is the name adopted by the women's self government organization. All women students are members and voters. The business of the association is carried on by a Council and a Judiciary Board. The Board has charge of the supervision of housing regulations and the observance of rules. It is composed of the Vice-President and one other member of the Council, together with a representative from each of five other student units. Detailed rules will be found in the A. W. S. handbook, given all incoming students.

Nancy Farley is president of the organization.

LIMITATION OF ACTIVITIES

The Associated Women Students have adopted a system whereby any one woman student is limited in her participation in student activities.

Under this system, the positions, offices, and other activities that a woman student may hold or engage in, are divided into three distinct groups lettered for convenience: A, B, and C.

Any student holding an A position may not hold any other on the Campus. Possible combinations in the other two groups are: one B and one C office; or three C offices.

Enforcement of these regulations is in the hands of a committee under A. W. S. This committee has the power to remove from office any student who has exceeded the stated number of positions possible in any combination.

When and if women students hold positions rated under Men's Student Council ratings, women shall be given the same letter ratings (A, B, C) as those assigned by the Men's Council.

The groupings are as follows:

THE A POSITIONS

President, A. W. S.

THE B POSITIONS

Officers, A. W. S. Council.
President, Y. W. C. A.
President, W. A. A.
President, Panhellenic.
President, S. W. L.
President, Social Sororities.
President, Home Economics Club.
Co-ed Editor, Michigan State News.

THE C POSITIONS

President of all Honorary Societies.
Members of Cabinet, S. W. L.
Board Member, W. A. A.
Board Members, Y. W. C. A.
Board Members, Home Economics Club.
Members, A. W. S. Council.
Member of Union Board.
Members of all publications staffs.
Class Officers (other than president).

FRESHMAN COUNSELORS

Freshman Counselors for women are not to be confused with Freshman Advisers. The Advisers are faculty members officially assigned by the college. The Counselors are sophomore girls assigned by a student committee and under the direction of a senior girl.

Advisers are primarily interested in the scholastic success of the student. Counselors are expected to be close personal friends ready to give help and to advise on problems which they themselves probably had to meet in their freshman year. These problems will largely involve questions of the new students' fitting into new surroundings and of being successful in the student community.

The chairman for 1937-'38 is Louise Langdon. Every girl should have had a Counselor assigned before she reaches college; those who have not received the name of a sophomore girl as a Counselor should notify the chairman of the A. W. S. office.

PANHELLENIC COUNCIL

Each sorority is a member of the Panhellenic Council and sends two representatives, a junior and a senior, to the meetings which are held throughout the year at the call of the President.

Panhellenic regulates rushing during the fall term and compiles scholarship statistics on the various sororities. All matters of common interest to these groups are discussed and reviewed at the meetings. A delegate is sent each year to the annual convention of the National Panhellenic Council.

Eileen McCurdy is president of the organization for 1937-'38.

INTERFRATERNITY COUNCIL

All member fraternities send one delegate to the meetings of the Interfraternity Council held weekly in the Union Building. Matters of common interest are discussed and problems reviewed. Where action is needed, committees are appointed to investigate, and the Council as a whole makes all decisions pertaining to interfraternity activities.

The Interfraternity Council regulates rushing during the fall term and initiation during the winter and spring terms. A delegate is sent each year to the convention of the National Interfraternity Council.

William Bell is president of the organization.

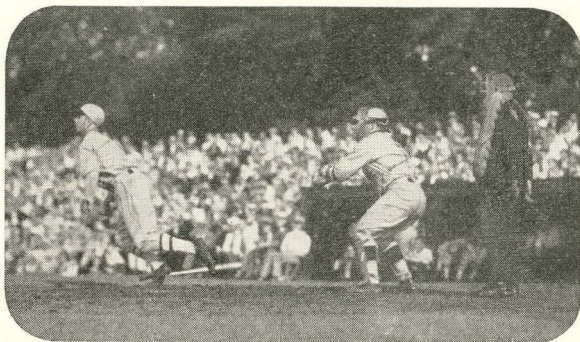
(Complete details on rushing and initiation, together with suggestions to new men, may be found on page 91.)

INDEPENDENT MEN'S LEAGUE

The Independent Men's League was planned and executed in the school year 1935-'36, by the combined efforts of the Dean of Men and a group of non-fraternity students. These men realized a need for organized and concerted activity in extra-curricular programs for the unaffiliated men students of the college. A constitution was drawn up and accepted. The organization has been recognized by the Student Coun-

cil, and the League Chairman has been given a seat on that Council as an ex-officio member.

The objectives of the League as written into the Constitution are: (a) to sponsor an extensive intra-mural program for Independents; (b) to promote inexpensive entertainment of varied kinds; (c) to promote wider and deeper interest in campus problems and activities, and (d) sponsor scholastic activity and improvement.



Baseball rules supreme in the spring at Michigan State.

Service

MICHIGAN STATE UNION

Built in 1925, the Michigan State Union Memorial Building serves as a college center for students, faculty members, alumni and visitors.

Located near the entrance of the campus, the Union Memorial building is well equipped to serve the purposes for which it was erected. The facilities include several private dining rooms, a ballroom, a cafeteria, soda fountain and grill, a main dining room, a spacious lobby, a barber shop, a womans lounge, and faculty and student clubrooms.

Various student offices are located in the east wing. Most of the college dances are held in the Union ballroom.

The Union has a desk in its lobby which has become a center of personal service for the general student body. Besides selling tobacco and class supplies, it maintains a second-hand textbook service, and is a general agency for tickets to all college functions.

The Union activities program is broad and varied. Tea dances are held two afternoons a week, and fall term mixers are usually centered in the Union. Visiting athletic teams are met by the Union committees. During homecoming class reunions and big games the Union building has always been the center of activity.

Every Michigan State student automatically becomes a member of the Union upon payment of the regular college fees.

Alumni and friends of Michigan State College subscribed a large sum of money for the purpose of starting the erection of the Union building. The state of Michigan purchased bonds that provided additional monies for the construction. The Union building remained uncompleted from 1925 until the present time. The State Administrative Board in March, 1935, with the assent of the Alumni Association, took over the building in behalf of the State Board of Agriculture. The management of the building was taken over by Michigan State College Aug. 1, 1935.

Major changes in the building were immediately contemplated. The food services were placed under the direction of the Home Economics division. Offices for the Dean of Men and the alumni activities were located in the room on the first floor that was formerly the billiard room, and the building was completely redecorated and refinished. More adequate facilities in the way of lounges have been provided and a large reception room for men students has been opened.

SPARTAN WOMEN'S LEAGUE

Spartan Womens League cordially welcomes all new students to Michigan State College. It is a service organization open for membership to all of the women students on the campus. It strives to create a stronger bond of friendship among college women and to develop leadership by offering each member the opportunity to use her abilities.

In order to give every member a chance to participate in work that is of particular interest to her, the League is sub-divided into the following six interest groups: social, athletic, social service, dramatic, art and publicity, and The Athenians. At the first meeting of the organization in the fall term, new members are to select the group in which they are most interested.

The group designated as "Athenians" welcomes all girls who do not plan to join social sororities. Membership in the League, proper, is not necessary. The purpose of this group is to bring together independent girls for companionship and a development of leadership.

A party will be given for all transfer students. Watch for posters announcing time and date. All new girls are welcome and the organization will try to be of assistance to you in any of your problems. This party will afford opportunity to meet not only the League members but also other transfer students.

Freshman girls will be given an opportunity to join the League at the Co-ed prom, October 7, or at the first general meeting about the middle of October.

General chairman is Norine Erwin.

WOMEN'S ATHLETIC ASSOCIATION

The Women's Athletic Association annually sponsors an athletic program that is intended to make sports available to every woman at Michigan State. Although membership is limited to those women who earn 100 or more athletic points, every woman on the campus is invited to take part in the varied sport events. Every woman is urged to take up some sport whether she has played it before or not.

The system of awards grants 100 points to each woman making the first class team, 50 points for second team members, and 25 points to those who have the required number of practices but fail to make the team. The points accumulate as the woman branches out into the various sports and the following awards are presented: For 100 points, the class numerals; 500 points, small "s"; 1,000 points, large "S"; and for 1,500 points, a place on the Honor Roll.

The W. A. A. activities have been divided into major and individual sports. A limitation provides that no student may carry more than two major activities per term in addition to the individual activities. The various sports have been divided as follows: Major—hockey, soccer, basket ball, swimming, fencing, baseball, tennis, bowling, volleyball, marksmanship, archery, dancing, and golf; Individual—hiking, canoeing, roller and ice skating, and riding.

The organization now numbers more than 100 members. The officers are Catherine Adams, president; Laura Ann Pratt, vice-president; Jean Jones, secretary; and Eileen McCurdy, treasurer.

STUDENT PUBLICATIONS

Three student publications are published during the school year at Michigan State College. They are the Michigan State News, semi-weekly newspaper, the Wolverine, year-book, and the Spartan, monthly magazine. Each of the publications is managed by a staff of students under the guidance of the faculty adviser.

The governing body of these publications is the Board of Publications, composed of managing editors, business

managers, publications' adviser, treasurer of the college, alumni secretary, president of the Student Council, and president of the Associated Women Students.

Michigan State News

The Michigan State News, official student newspaper, will be inaugurated in the fall of 1937 as a tri-weekly paper. In the last few years the paper has been issued semi-weekly. Subscription to the newspaper is included in the fees paid upon registration.

The managing editor and the business manager are selected by the Board of Publications from qualified applicants during the winter term. The rest of the staff is appointed by the editor and the business manager.

The office of the publication is located in the basement wing of the Union Building. Tryouts for either the editorial or business staffs may be arranged by calling at the office or making an appointment with Ola Gelzer, editor, or Robert Refior, business manager. Lloyd H. Geil, instructor in journalism, is the faculty adviser.

Wolverine

The Wolverine, yearbook, is published late in the spring term. It presents a panoramic view in stories and pictures of the important events on the campus from September to the time of publication. Including a survey of departmental activities, athletic contests, classes, and campus features, the Wolverine depicts the highlights of college life.

The yearbook staff is composed of the managing editor and the business manager, selected by the Board of Publications during the winter term, and other students appointed by the staff heads, following successful tryouts. Students desiring to work on the yearbook staff should see the editor or the business manager during the fall term. The office is located in the basement wing of the Union Building.

William Ingleson is the editor, and Benita Core the business manager of the 1938 Wolverine. Lloyd H. Geil, instructor in journalism, is the faculty adviser.

Spartan

The Spartan magazine, a serio-comic monthly issue, was organized in the winter of 1937 by James Hays and Myron MacDonald under the sponsorship of the Press Club.

The magazine contains stories, cartoons, articles, and jokes.

The managing editor and the business manager are selected by the Board of Publications during the winter term.

The office is located off the main lounge in the Union Building. Tryouts for the staff may be arranged by contacting Harvey Harrington, editor, or Fred Arnold, business manager. Lloyd H. Geil, instructor in journalism, is the faculty adviser.

MUSIC

Excellent facilities are provided for students interested in music. Four-year courses are offered in Public School Music and Applied Music, as well as Instrumental Supervision, leading to B. A. and B. M. degrees. Instruction may be obtained in piano, violin, voice, cello, organ, chamber music and all instruments of orchestra and band.

All new students, either freshmen or transfer, entering the music department curricula or the liberal arts division with a major in music, must have entrance examinations, both in their major instrument or voice and as to their general musical ability. These examinations must be completed before enrollment is made. For dates of examinations, see college calendar and freshman week programs.

In addition to the regular courses offered by this department there are many extra-curricular student activities open to both men and women. Tryouts for these organizations are held early in the fall term, the time of actual tryouts being announced on the various bulletin boards of the campus. This group includes the M. S. C. Band, under direction of Leonard Falcone; the Michigan State College Symphony Orchestra, under the direction of Michael Press; the Women's Glee Club, under the direction of Josephine

Kackley; the Chorus and Men's Glee Club, under the direction of Fred Patton; and the A Cappella Choir, under the direction of William Kimmel.

All of these organizations give public concerts at intervals throughout the year. The Orchestra will offer its usual series of three symphony concerts, while the Band continues its open-air concerts in the spring term, besides appearing at athletic events throughout the year.

Further information concerning the Department of Music and its activities may be obtained at the office in the Music Building situated at the entrance to the campus.

STUDENT LECTURE COURSE

Every year each student pays a blanket tax of a few cents and without additional expense may hear some of the best-informed, ablest and most interesting speakers in the United States, with an occasional eminent speaker from abroad. Speakers are chosen by a joint committee of students and faculty. The lecture course has become an important part of the educational program of the college.

The program for 1937-'38 includes in the order named: Lowell Thomas (famous commentator and broadcaster), Drew Pearson (lecturer and co-author of "The Washington Merry-Go-Round"), J. B. Williamson (explorer and originator of under-sea motion pictures), William Lyon Phelps (Yale University professor and essayist), the Honorable Ellen Wilkinson (member of the British Parliament), Allan Villiers (adventurer), Soo Yong (lecturer of Chinese art and drama, actress in "Good Earth"), Bradford Washburn (mountain climber and explorer), and Rockwell Kent (noted artist).

Debating, Oratory, Extemporaneous Speaking, and Poetry Reading

Every year a number of men and women make places on the men's and the women's teams that represent the college in debates with nearly all the Michigan colleges and several prominent institutions outside the state. Stu-

dents interested in debate should see instructors James McMonagle and J. D. Menchhofer, coaches of men's and women's teams respectively.

The college also participates in various oratorical and extemporaneous speaking contests. Gordon Fischer is in charge of the latter and Mr. Menchhofer directs the work in oratory.

Cecil H. Nickle directs the students who participate in the state poetry reading contest.

A few of the best debaters, orators and extemporaneous speakers enter the nation-wide competition conducted by Pi Kappa Delta, national forensic society.

ATHLETICS

Students who are interested in athletics have great opportunities at Michigan State. Under the guidance of Ralph H. Young, director of athletics, this institution holds a high position in mid-western competition in intercollegiate sports, while a well-organized program of intramural athletics is available to every student.

INTERCOLLEGIATE ATHLETICS. The Athletic Department sponsors teams in all the branches of intercollegiate sports. The teams are coached by these men; football, Charles W. Bachman; basket ball, Benjamin F. VanAlstyne; baseball, John H. Kobs; track, Ralph H. Young; cross country, Lauren P. Brown; wrestling, Fendley A. Collins; swimming, Russell B. Daubert; fencing, Thomas Canniff; tennis, Charles D. Ball; golf, Benjamin F. VanAlstyne; rifle, Capt. Marcus B. Boulware.

FRESHMAN ATHLETICS. Due to the intercollegiate ruling that freshmen cannot compete in varsity athletics, the first year athletes are given an opportunity to take part on freshman squads in all sports engaged in by varsity teams. Games with the varsity and with other college freshmen teams enliven the schedules of the yearling aggregations. The coaches for most of the sports are the same as for the varsity teams, exceptions are as follows: football, John H. Kobs; basket ball, Thomas H. King; baseball, Lyman L. Frimodig.

INTRAMURAL ATHLETICS. Under the supervision of Mr. Frimodig, assistant director of athletics, Michigan State pursues a well-organized intramural program. Providing sports for every student, the department offers tournaments in tennis, golf, basket ball and horseshoe; in addition, various other lines of competition are offered for class teams representing each division, and dormitory teams. Small numerals are awarded to class champions.

INTER-SOCIETY ATHLETICS. Fraternities are organized into leagues or blocks of four or five members. Each society engages with the other members of its block; then the champions of each block compete. Following this comes the competition for the finals and the consolations. Cups or other awards are made to runners-up and champions in each sport, and a large trophy is given the society claiming the most points for all-around competition in all events.

The sports offered for inter-society competition include basket ball, indoor and outdoor baseball, bowling, indoor and outdoor track, swimming, tennis, touch football, and relays.

WOMEN'S ATHLETICS. Jointly sponsored by the Women's Physical Education Department and the Women's Athletic Association, a complete athletic program gives each woman student an opportunity to take part in athletic competition. No intercollegiate engagements are made, the program being limited to individual, team and inter-sorority events. Sports offered include hockey, golf, fencing, bowling, hiking, basket ball, swimming, soccer, tennis, track, dancing, playground ball, riding, archery, and badminton.

Religion

THE PEOPLES CHURCH

W. Grand River at Michigan

The Peoples Church, an interdenominational religious organization, is the community religious center for Michigan State students and the citizens of East Lansing.

The completely equipped building is open from 8 a. m. to 9 p. m. daily. Student groups may use the auditorium, the chapel, social hall, gymnasium and student parlors. The chapel and student parlors are always available to individual students.

Morning worship at Peoples Church is a M. S. C. tradition. The service at 10:30 Sunday morning is enriched by instrumental and choral music in addition to Dr. N. A. McCune's sermon.

The staff of the Peoples Church:

Minister.....	Newell A. McCune, D.D.
Associate Minister Emeritus.....	Martin L. Fox
Assistant Minister.....	H. G. Gaige
Director Men Students, Y. M. C. A. Secretary.....
.....	William H. Genne
Director Women Students, Y. W. C. A. Secretary....
.....	Miss Emma Sater
Office Secretary.....	Mrs. Grace Lyon

Peoples Church Student Organizations

STUDENT CHRISTIAN UNION (Lawrence Ball, president) is the Sunday evening group of men and women students who gather in the Student Parlors for informal socializing, supper and a varied program. Plans this year include services of meditation and worship followed by small, intimate interest groups on a variety of topics.

COLLEGIUM (Leone Chavey and Robert Richardson, co-chairmen) is a group open to both men and women which meets in the Student Parlor immediately following the morning worship. It is the purpose of this group during the fall term, to develop through discussion and study, a better understanding of and a more intelligent participation in services of worship. Visits will be made to other churches during the term.

STUDENT CLUB (Elva Lea Foltz, president) is a social and recreational organization open to all students, with headquarters in the Church. Its purpose is the organizing of creative, varied, democratic, and inexpensive social activities. A party is held every Friday evening. Membership is at a nominal fee.

Y. W. C. A. The Y. W. C. A. has an active student organization with offices in the Peoples Church. Membership is open to every college woman who wishes to learn how to live fully and creatively. The program is based on interest groups: social service, world fellowship, social, worship, and religious study and discussion, dramatics and handicraft. Members may also serve on committees for program, membership, finance, music. Membership fees, remunerative projects and a contribution from the Community Chest make up the budget receipts. The president for 1937-'38 is Barbara Tranter, who will be assisted by a Senior Cabinet of 20 girls and a Junior Cabinet of 10 selected from Freshman girls who were especially active last year. Miss Emma Sater is the general secretary.

Y. M. C. A. The Y. M. C. A. (Roger P. Wilcox, president) at Michigan State College is the local expression of the international, intercollegiate fellowship of men who are seeking to gain, in addition to their education, an understanding of what an intelligent religion can mean in personal and social experience. From the time Freshman Camp greets the Freshman until the Senior Recognition Service in the spring the "Y" offers something to make each of your four years here more worthwhile. Mr. Genne, the adviser, has his offices in Peoples Church.

CHURCH OF THE RESURRECTION (Roman Catholic)

Michigan Avenue at Rumsey, Lansing

Rev. John A. Gabriels, Pastor

Sunday Masses: 7—8—9—10—11—12:30

Weekday Masses: 7:00—8:00

ST. PAUL'S (Episcopal)

220 West Ottawa, Lansing

Rev. Clarence W. Bricman

Sunday Services: Holy Communion—8:00 a. m.

Morning Prayer and Sermon—11:00 a. m.

Young People's Fellowship—6:00 p. m.



Paths along the Red Cedar invite the hiker.

Traditions and Customs

Traditions play a large part in the student life at Michigan State. Developed over a long period of time, the traditions have become a well-loved and important factor which gives the College a richer background.

Traditions are not laws and are never regarded as such. Rather, they are time-honored customs which have become universally accepted by the student body for many years. No one is absolutely compelled to obey these traditions, yet there are very few offenders. Every student seems to feel it his personal duty to comply with the rulings and as a result the traditions have become an intangible set of rules compelled by no one, enforced by no one, yet obeyed by all.

The more important of the traditional customs follow:

1. No one smokes on the campus, except in the Union Building.
2. Everyone does his part to foster the congenial, democratic spirit of Michigan State. Whether he knows the person, a student greets each passerby on the campus.
3. All freshman men wear the traditional green "pots" at all times except Sundays. This distinguishes them as newcomers to the campus and is regarded as a privilege rather than a burden.
4. No one cuts across the lawns.
5. No one defaces College property.

EVENTS

CLASS DAY. One of the most popular underclass events is the Freshman-Sophomore Class Day. Competing in relay races, obstacle races, tug-of-war, and other track and field events, the two classes vie for superiority. The affair is under the supervision of the Student Council.

BARBECUE. After considerable rivalry during the fall term the two lower classes "bury the hatchet" at the Barbecue sponsored by the sophomore class. With an abun-

dance of food, cider and good fellowship, the event marks the close of the hostilities for the year. A big bonfire, speeches and an all-college dance round out the program.

MAY MORNING SING. Annually sponsored by the various musical organizations, the May Morning Sing has become one of the most beautiful of Michigan State traditions. An appropriate program of musical numbers is given at the Beaumont Tower early in the morning before classes.

ANNIVERSARY DAY. During the second week in May, students and faculty join in commemorating the founding of the College. A special convocation with a suitable program is usually arranged for this occasion.

ACHIEVEMENT DAY. Early in the college year, a special convocation is called at which awards and cups for high scholarship are distributed and special recognition given to those students who have made better than a "B" average during the preceding year or years. The convocation has become an important factor in promoting scholarship and academic standards.

SENIOR SWINGOUT. The first of the numerous senior activities is the "Senior Swingout". Held late in May, the ceremonies include a line of march of the graduating seniors dressed in cap and gown. During the course of the march the seniors go under arches erected by the various classes which signify the passing of a year in college.

LANTERN NIGHT. Lantern night, in which only co-eds participate, is held late in the spring term and is one of the most popular co-ed traditions. Lantern Night symbolizes the transferring of duties from the upper classes to the next class in line.

Lanterns are carried by all senior women and by representatives of the other classes. The passing of the lantern to the class next in rank makes a picturesque finale after the installation of the new A. W. S. officers and the calling of the Mortar Board members for the coming year. In 1937 the Panhellenic officers will be installed at the same time.

WATER CARNIVAL. The annual Water Carnival staged on the Red Cedar river near Farm Lane bridge is sponsored by the senior class. This event, held during the last week of college in the spring, consists of a program including a parade of floats, specialty acts, and contests. The Water Carnival is of two days' duration.

SENIOR PLAY. As a climax to the dramatic work of the year, the Senior class annually sponsors an out-of-door production presented in the Forest of Arden during the final week of the spring term. Although members of other classes are cast for some parts, the prominent senior thespians are usually selected for the leading roles.



"At home" after a day of classes.



Home Economics Building.

Fraternalism---

Honorary and Social Organizations

HONORARIES

Scholastic

ALPHA PSI, national honorary veterinary fraternity, limits its membership to students who have excelled in work in the veterinary sciences.

ALPHA ZETA, national agricultural honorary, limits its membership to junior and senior men who rank in the upper two-fifths of their class. The organization promotes high scholarship and acts as sponsor for several activities each year.

BETA ALPHA SIGMA, local honorary landscape architecture, floriculture, and allied arts fraternity, has as its purpose the promotion of scholastic attainment and advancement in appreciation and knowledge of landscape architecture and the allied arts.

LA COFRADIA, local Spanish honorary, limits its membership to students who excel in using the Spanish language.

MORTAR AND BALL, an honorary Coast Artillery fraternity, has as its purpose the better preparation of advanced artillery cadets for the R. O. T. C. camps through cooperation with the military department.

MU PHI EPSILON, national honorary music fraternity, limits its membership to junior and senior women studying music who rank in the upper fourth of their class. It has as its purpose the advancement of music through cooperation with national and civic musical organizations.

OMICRON NU, national home economics fraternity, limits its membership to junior and senior women of high academic rating in home economics.

PI KAPPA PHI, national scholastic honorary, restricts its membership to those students who for their entire college career have the highest averages regardless of the line of work they take up.

PHI LAMBDA TAU, local engineering honorary, limits its membership to junior and senior engineering students who have attained a high scholastic average.

PHI ALPHA XI, a national floriculture honorary, has as its purpose the promotion of high scholarship, the fostering of good fellowship among its members, and the establishment of cordial relations among students, educators, and professional florists.

PHI SIGMA, is a national honorary fraternity for graduate students in the biological sciences.

SIGMA ALPHA BETA, local honorary bacteriological fraternity, has as its purpose the encouragement of higher scholastic attainment in the field of bacteriology.

SIGMA GAMMA UPSILON, a local Hotel honorary, has as its purpose the promotion of scholarship, and good fellowship among its members, and the establishment of closer relations among students, educators, and professional hotel men.

SIGMA PI SIGMA, national honorary Physics society, limits its membership to students who have excelled in work in Physics, and has as its purpose the promotion of scholastic attainment and the advancement of Physics.

SIGMA XI, national honorary science fraternity, extends membership to exceptional students in the sciences.

TAU BETA PI, national honorary engineering fraternity, limits its membership to students who have earned scholastic distinction in the engineering division. It was established at Michigan State in 1892.

TAU SIGMA, local honorary art and science fraternity, awards membership to those students who maintain a high average during the first three years of work at Michigan State.

XI SIGMA PI, national honorary forestry fraternity, draws membership from those showing scholastic proficiency in that course.

Non-scholastic

ALPHA PHI OMEGA, is a national service fraternity whose by-word is "Service," to the college and student body. It is the college program of the Boy Scouts of America and limits membership to those who are or have been Boy Scouts.

ALPHA EPSILON MU, national musical fraternity, selects as its members men who have been active in the interests of the college band, glee club or orchestra.

THE BAND CLUB, local honorary organization, is open to outstanding members of the Michigan State Military band. Sophomores and juniors are eligible for membership.

BLUE KEY, is a national service honorary fraternity which has as its creed the welcoming of visitors to the campus, the planning of pep meetings, and other activities of a similar nature. Men who are outstanding in extra-curricular activities are selected at the beginning of their junior year in college.

EXCALIBUR, local senior men's honorary, has as its members men who have given leadership during their undergraduate days at M. S. C. New members are tapped at important all-college convocations.

GREEN SPLASH, the co-ed honorary swimming club, annually picks as its members girls who have fulfilled certain requirements, both in scholarship and in swimming. Various activities round out the program for the year.

PI KAPPA DELTA, national forensic honorary, limits its membership to students who have made enviable records in debating and oratory.

"S" CLUB, a local honorary in women's athletics, includes those girls in the Women's Athletic Association who have accumulated 1,000 athletic honor points during their college career.

PORPOISE, national men's swimming honorary, has as

its creed, the promotion of swimming. The club sponsors various activities during the college year.

SCABBARD AND BLADE, national honorary military fraternity, has as its creed the promotion of interest in R. O. T. C. affairs. The membership is limited to outstanding advanced military students.

SIGMA DELTA PSI, national honorary athletic fraternity, is open to any man who can successfully meet certain specified requirements in athletics.

SIGMA EPSILON, local honorary business administration fraternity, limits its membership to students in that division. The organization promotes interest in business administration.

MORTAR BOARD, a national senior honorary for women, limits its membership to those who have taken a prominent part in extra-curricular activities and who have demonstrated leadership. Members are selected from the junior class at a college convocation.

THETA ALPHA PHI, national dramatics society, limits its membership to students who do outstanding dramatic work on the campus. The Michigan State chapter sponsors several plays each year.

TOWER GUARD is a local honorary for sophomore girls selected at the end of their freshman year. Members act as counselors of freshman girls during the following year.

VARSITY CLUB, a local honorary, selects its members annually from the ranks of the major sport letter winners in their junior year.

PROFESSIONAL

ALPHA CHI SIGMA, national in scope, is neither a social fraternity nor an honorary, but a professional society; the fact that many of its chapters maintain houses as well as its high scholastic requirements for membership gives it qualities of both. Besides being open only to men majoring

in chemistry, the society stipulates that the character of the men be carefully considered. The local chapter is composed entirely of upper classmen, graduate students, and faculty members. The chapter maintains a house at 406 M. A. C. Avenue.

SIGMA ALPHA IOTA, professional music fraternity for women, has as requirements for membership high scholarship and capable performance in music. Its aim is to promote high standards of productive musical work among women of colleges, universities, and conservatories.

VOCATIONAL AND CULTURAL CLUBS

ART CLUB, founded by students and members of the Art Department, has as its purpose the furtherance of thought along artistic lines.

AMERICAN CHEMICAL SOCIETY, a national organization, devotes time to the promotion of interest in work in that field.

AMERICAN INSTITUTE OF ELECTRICAL ENGINEERS is open to both professors and students in electrical engineering.

AMERICAN MANAGEMENT ASSOCIATION is an organization which has as its purpose the sponsorship of meetings at which problems of industry are discussed. The club is a junior chapter of the national association.

AMERICAN SOCIETY OF CHEMICAL ENGINEERS is an organization for Chemical Engineering students, and has as its purpose promotion of interest and knowledge in this field.

AMERICAN SOCIETY OF CIVIL ENGINEERS limits its membership to junior and senior students in that field. Members of the campus group are eligible upon graduation to join the senior chapter.

AMERICAN SOCIETY OF MECHANICAL ENGINEERS, a junior branch, is an organization to which all student junior and senior mechanical engineers are eligible.

AMERICAN VETERINARY MEDICAL ASSOCIATION, a student chapter, limits its membership to veterinary students.

BEEKEEPERS' SEMINAR is composed of students especially interested in this field. Regular meetings are held at which major problems are considered.

BLOCK AND BRIDLE is an organization open to all students interested in animal husbandry. Interesting meetings are held at regular intervals.

BOTANICAL SEMINAR is a group of students and faculty members who devote their time to study and research in botany.

COSMOPOLITAN CLUB is an organization of foreign students which aids in the orientation program for foreign students.

DAIRY CLUB is an organization for students who are specializing in dairy production or manufacturing. Questions of dairy interest are discussed.

FORESTRY CLUB is a group composed of forestry students. Projects of interest are discussed at regular meetings and various social activities are sponsored annually.

GEOGANGUE is composed of Geography and Geology students. Its purpose is to weld geology students closer together and it publishes its own annual, "The Geode".

4-H CLUB for continuance of this type of club work into college. The club aims to further activity of the farmer and it also assists with the farm radio program and Future Farmer Week.

HOME ECONOMICS CLUB, affiliated with the Michigan and National Home Economics associations, is open to all women enrolled in the home economics division.

HORTICULTURE CLUB is open to all students who are either majoring or planning to major in horticulture.

MATHEMATICS CLUB, is open to students taking higher mathematics. The group does tutoring and works for the promotion of interest in mathematics.

MICHIGAN STATE COLLEGE PRESS CLUB, a new organization to further interest in journalistic activities on the campus, takes the place of Pi Delta Epsilon, which disbanded in the spring term of 1933. Besides sponsoring a series of lectures on journalism, the club has established a press service for high school papers in the state.

NATIONAL SOCIETY OF PERSHING RIFLES, an honorary organization for basic military students. They have a national publication and have regular drills.

OFFICERS CLUB, is an organization of the students who are taking advanced military science. The group annually sponsors the military ball, smokers, and other social functions for military men.

ORCHESIS, a branch of the national dancing organization, has as its purpose the promotion of interest in artistic dancing. Membership is limited to women of advanced talent.

SIGMA RHO TAU is a national organization devoted to giving engineering students an opportunity to develop their speaking possibilities. Cognizant of the fact that very few chances are given the undergraduate engineer to speak to an audience, this group fosters speaking tournaments under the direction of a member of the speech department.

SPARTAN CAMERA CLUB. An all-campus club, whose purpose is to bring together students and faculty members interested in photography as a hobby. The Club sponsors talks by members on various phases of photography, sponsors contests, and contributes a large number of snapshots to the college annual.

ZOLOG, is an organization to promote interest in zoology and conservation.

MEN'S GLEE CLUB, is an organization for men interested in singing. This club appears at the college functions and sponsors concerts. A key is given for two year's service,

MICHIGAN STATE COLLEGE STUDENT ASS'N, is a club to discuss and stimulate student thought on social and economic events.

FRATERNITIES

Name	Address	Phone
*Alpha Chi Sigma (N).....	341 Evergreen	3578
Alpha Epsilon Pi		
Jewish (N).....	404 Michigan Ave.....	20453
Alpha Gamma Rho (N)....	335 E. Grand River.....	53292
Beta Kappa (N).....	729 E. Grand River.....	3008
Delphic (L).....	453 Abbott Road.....	52143
Delta Chi (N).....	101 Woodmere	52807
Delta Sigma Phi (N).....	E. Gd. R., City Limits...	21364
Eclectic (L).....	451 Evergreen	53264
FarmHouse (N).....	526 Sunset Lane.....	21060
Hermian (L).....	224 W. Michigan.....	52744
Hesperian (L).....	Harrison, W. Gd. River...	3812
Lambda Chi Alpha (N)....	128 Haslett St.....	22133
Phi Chi Alpha (L).....	323 Ann St.....	3402
Phi Delta Theta (N).....	W. Gd. River, Cowley....	57237
Phi Kappa Tau (N).....	223 Delta St.....	52282
Pi Kappa Phi (N).....	803 E. Grand River.....	52695
Sigma Alpha Epsilon (N)..	131 Bogue St.....	3767
Sigma Nu (N).....	444 Abbott Road.....	22318
Theta Kappa Nu (N).....	334 W. Michigan.....	22367

These 19 men's social organizations on the campus, some national and some local in nature, play an important part in the life of the college. They maintain houses in which members and, occasionally, pledges live.

Fraternities recruit their members by selecting them from the student body. It is not ethical for a student to indicate his desire to join a particular fraternity. Invitation to join originates with the organization. Each fraternity considers many men for membership. They learn all they can about each one and very carefully select the ones who seem best

*denotes professional fraternity.

(L) denotes local fraternity.

(N) denotes national fraternity.

suiting to their own group. These few are extended bids, and the student then accepts or refuses the invitation.

The better fraternities are extremely careful in their work of rushing (becoming acquainted with prospective members). A student who is boastful, vulgar, uncouth, or overbearing is at once dropped from the list of prospects. Good students, men with strong moral convictions, and true gentlemen are the men who command the attention of the fraternities.

A fraternity's first impression of a freshman is very important. Make this first impression lasting by being alert, pleasant and natural.

When the rushing period opens, with the start of college in the fall, you may be rushed or you may be overlooked. In either case, keep cool. The decision to pledge membership to a fraternity is an important step, one which deserves mature deliberation, and the freshman who escapes the necessity of making this decision is not altogether unfortunate. If you are overlooked in the early rushing, you will probably have another opportunity, even if not until your sophomore year.

To be a "misfit" in a fraternity is certainly a misfortune. The choice of a fraternity is a serious matter and must be faced squarely in a serious manner.

Don't be misled. When the time comes for you to make a choice of fraternities, be wise, look at things squarely and from all sides. Don't join a group because you feel obliged to, or because you find yourself in a "sweat-box" and are afraid to refuse.

REGULATIONS

Pledging rules, as laid down by the Interfraternity Council, should be observed faithfully by all freshmen and other students. These, as taken from the Council Constitution, follow:

Article IX—Pledging

Section 1. A student is not deemed pledged to a fraternity until all the formalities specified in this article have been complied with.

Section 2. The pledging of a student to a fraternity shall be formally accomplished as follows: Upon invitation of a fraternity to become one of its members, a Rushee shall be required to fill out a Pledge Card supplied by the Council. The signing of this card by the Rushee is accepted conclusively as his consent to pledgeship. The Pledge Card shall also be signed by the President of the fraternity concerned, his signature being formal acknowledgment that a bid to membership has been extended and accepted. The card shall then be presented to the office of the Dean of Men, endorsed by him and the Secretary of Interfraternity Council, and shall act as conclusive proof of the pledgeship only after being filled in and endorsed as indicated.

Section 3. The relationship between pledge and fraternity shall be considered as probationary, from the standpoint of both pledge and the fraternity. However, no student's name may be dropped from the pledge roll of any fraternity until the written notification has been sent to the secretary of the Council and the written notice of its acceptance has been received by the fraternity from whose pledge roll the name is to be taken.

Section 4. No student whose name has been dropped from the pledge roll of any fraternity may be pledged to any other fraternity, without the written consent of the releasing fraternity, until six months have elapsed since his release.

Section 5. No student may be pledged to any fraternity until seven days have elapsed since the official opening of classes.

Section 6. A student who is on trial or probation may not be pledged to a fraternity, until such time as he may have a regular status.

Section 7. For the purposes of observing study hours houses must release rushees not later than 10 p. m. during rushing period.

Section 8. In order that the office of the Dean of Men may determine the extent of rushing activities, the Rushing Chairman must submit to that office the names of rushees entertained each day during Rushing Week.

SORORITIES

Name	Address	Phone
Alpha Chi Omega (N).....	548 M. A. C. Ave.....	3265
Alpha Gamma Delta (N)....	139 Bailey St.....	24653
Alpha Omicron Pi (N).....	235 Ann St.....	28046
Alpha Phi (N).....	327 Hillcrest St.....	22641
Alpha Xi Delta (N).....	148 W. Grand River.....	25556
Chi Omega (N).....	239 Oakhill Ave.....	57239
Kappa Alpha Theta	303 Oakhill Ave.....	22440
Kappa Delta (N).....	231 Valley Ct.....	24453
Kappa Kappa Gamma (N)..	605 M. A. C. Ave.....	57187
Sigma Kappa (N).....	445 Abbott Road.....	23142
Zeta Tau Alpha (N).....	428 Evergreen	52109

Each of these 12 sororities entertains during rushing season approximately 100 freshman women. Of this number, only 10 to 30 are invited to membership. However, Panhellenic, the governing body of all social sororities, wishes that the friendly relations established during this season may continue throughout the college career.

All groups are worthy of membership, and the rushee is urged to make her selection independently. Her choice of a group should be on the basis of congeniality; that is, the rushee should select the sorority in which she, as a member, would be most happy. She should remember, in making her choice, that the associations formed in that organization are for a period of four years or more, and therefore are of the utmost importance. Nothing is more tragic than a misfit.

During the period of silence, as explained in the rules, the rushee must cooperate in having no communications whatsoever with active sorority members.

It is considered beneath the standards of both the local and the national Panhellenic for any woman to speak disparagingly of any group or individual. A member of one organization who so forgets herself as to criticize any member of another group, or the group as a whole, discredits

(L) denotes local sorority.

(N) denotes national sorority.

herself in the eyes of all prospective, as well as active members.

The cost of joining a sorority is an important point to investigate carefully. Specific expense lists of the various sororities are compiled in the Panhellenic Handbook, copies of which may be obtained at the Panhellenic Office, Room 109, Peoples Church.

Young women who are accepting rushing invitations should inform themselves carefully on matters of expense in fairness to themselves and to the sororities.

Simple afternoon dress will be appropriate for all rushing parties except the formal party. This will be indicated on the invitation.

If an invited guest is unavoidably detained, she should not hesitate to telephone about her arriving at the rushing party somewhat after the appointed hour.

For the last two parties, the rushee should accept the invitations of those groups in which she is most interested. However, the acceptance of the invitation for the last party DOES NOT indicate her choice; nor does this invitation indicate the sorority's choice of rushees.

Rushing Rules

Rushing rules are printed in full in the Panhellenic Handbook, which may be obtained, by anyone interested, in the Panhellenic Office in the Peoples Church.

RUSHING CALENDAR FOR 1937

Saturday, September 18—Open tea for first half of sororities—3:00-5:30. Alpha Chi Omega, Alpha Gamma Delta, Alpha Omicron Pi, Alpha Phi, Alpha Xi Delta. Any non-sorority woman is welcome at any sorority house.

Sunday, September 19—Open tea for second half of sororities—3:00-5:30. Chi Omega, Kappa Alpha Theta, Kappa Delta, Kappa Kappa Gamma, Sigma Kappa, Zeta Tau Al-

pha. Any non-sorority woman is welcome at any sorority house.

Tuesday, September 21—Open House—7:00-8:45.

Thursday, September 23—Open House—7:00-8:45.

Friday, September 24—Buffet Supper—5:30-7:30.

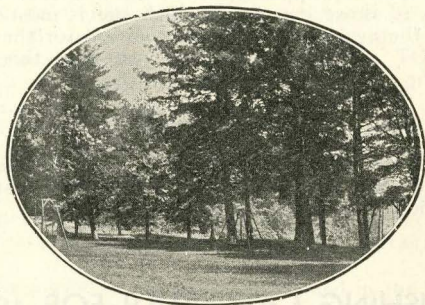
Saturday, September 25—Luncheon—12:00-2:00.

Monday, September 27—Open House—7:00-8:45.

Tuesday, September 28—Buffet Supper—5:30-7:30.

Wednesday, September 29—Open House, Preference Party—7:00-8:45.

Friday, October 1—Formal Dinner, Preference Party—6:00-8:45.



State Songs

ALMA MATER

Close beside the winding Cedar's
Sloping banks of green,
Spreads thy campus, Alma Mater,
Fairest ever seen.

Chorus

Swell the chorus; let it echo
Over hill and vale;
Hail to thee, our loving mother,
M. S. C. all hail.
First of all thy race, fond mother,
Thus we greet thee now,
While with loving hands the laurel
Twine we o'er thy brow.

FIGHT SONG

On the banks of the Red Cedar
Is a college known to all;
Their specialty is winning,
And those Spartans play football.
Spartan teams are never beaten,—
All through the games they fight,—
Fight for the only colors,
Green and white.

Chorus

Smash right through that line of blue,
Watch the points keep growing,
Spartan teams are bound to win,
They're fighting with a vim,
RAH! RAH! RAH!
See their line is weakening,
We're going to win this game,
Fight! Fight! Rah! team, fight!
Victory for M. S. C.

M. S. C. SHADOWS

M. S. C., we love thy shadows
When twilight silence falls,
Flushing deep and softly paling
Our ivy covered halls.
Beneath the pines we'll gather
To give our hearts to thee,
Sing our love for Alma Mater
And thy praises, M. S. C.
When from the scenes we wander
And twilight shadows fade,
Our mem'ry still will linger
Where light and shadows played;
In the ev'ning oft we'll gather
And turn our thought to thee,
Sing our love for Alma Mater
And thy praises, M. S. C.

Index

	Page
Activities, Limitation of	62
Administrative Officers	9
Advisers, Class	41
Advisers, Freshman	14
Athletics	53, 74
Attendance System	45
Associated Women Students	64
Board of Publications	70
Calendar	8
Church of the Resurrection.....	78
Closing Hours	53
College Buildings, Use of.....	55
Credits	42
Deans and Officers, List of	9
Debating and Oratory.....	73
Dropping a Subject.....	41
Eligibility Rules	53
Examinations	16, 44
Fraternities, Honorary	84, 91
Fraternities	84
Freshman Advisers	14
Freshman, Counselors	65
Freshman, Directions	11, 17
Freshman, Programs	17
Freshman, Social Events.....	39
Freshman Week	11
Grades	43
Group Programs, Freshman	17
Health Service	49
Honoraries	84
Independent Men's League	66
Interfraternity Council	66
Late Registration	42
Library	58
Limitation of Activities	62
Loan Funds, Student	56
Michigan State News	70, 71

	Page
Michigan State Union	68
Military Training	56
Music	72
Panhellenic Council	66
Party Rules	52
Peoples Church	76
Physical Education, Requirements.....	58
Points, Honor	43
Publications	70
Registration	41
Regulations, Fraternity	92
Regulations, Sorority	92
Regulations, Traffic	55
Religion	76
Residence Requirements, Men	46
Residence Requirements, Women	48
Rushing Calendar, Sororities.....	95
Scholarships	56
Songs	97
Sororities	94
Sororities, Regulations	92
Spartan (Magazine)	72
Spartan Women's League.....	69
St. Paul's Episcopal Church.....	78
Student Council	62
Student Government	62
Student Lecture Course	73
Studies and Credits	42
Traditional Events	79
Traffic Regulations	55
Transfer Students, Directions.....	32
Union	68
Visitors in Class	43
Vocational and Cultural Clubs.....	88
Withdrawals	45
Wolverine	70, 71
Women's Athletic Association	70
Y. M. C. A.	77
Y. W. C. A.	77

