

MICHIGAN STATE UNIVERSITY PUBLICATION



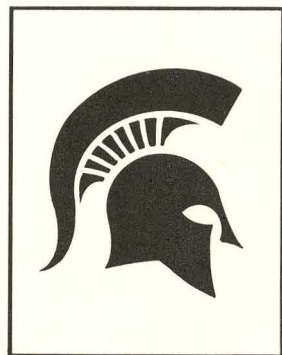
the SPARTAN

a Student's Guide
to the University

Telephone Numbers

	<i>Area Code 517</i>
<i>Michigan State University E. Lansing, Michigan</i>	<i>355-1855</i>
<i>Office of the President 319 Administration Bldg.</i>	<i>355-6560</i>
<i>Office of the Provost 306 Administration Bldg.</i>	<i>355-6550</i>
<i>Office of the Registrar 116 Administration Bldg.</i>	<i>355-3300</i>
<i>Office of Admissions & Scholarships 258 Student Services Bldg.</i>	<i>355-8332</i>
<i>Dean of Students 152 Student Services Bldg.</i>	<i>355-8322</i>
<i>University Business Office 204 Administration Bldg.</i>	<i>355-5050</i>
<i>Counseling Center 207 Student Services Bldg.</i>	<i>355-8270</i>
<i>Housing Assignment Office 112 Brody Hall</i>	<i>355-7462</i>
<i>Off-Campus Housing Office 101 Student Services Bldg.</i>	<i>355-8303</i>
<i>Placement Bureau 142 Student Services Bldg.</i>	<i>355-9511</i>
<i>Student Health Service Olin Memorial Hospital</i>	<i>355-4510</i>

MICHIGAN STATE UNIVERSITY PUBLICATION, Vol. 58, No. 9, May, 1964.
Published monthly in August, November, December, January, February,
March, and May, and semi-monthly in September and June by Michigan
State University, B Wells Hall. Second class postage paid at East Lansing.



the SPARTAN

This booklet for new Spartans will serve to introduce you to traditions, rules, and activities at Michigan State. It is issued by the All-University Student Government and the Office of the Dean of Students.

Contents

The Most Exciting and Rewarding Years of Your Life 3

Getting Ready to Come to Michigan State 5

Becoming a Student 21

Your Responsibilities as a Student 38

Your Opportunity to Participate 43

Religious Life 57

Calendar of Events 61

Index 63

*"The most exciting
and rewarding years
of your life"*



President Hannah

THIS HANDBOOK has been written to help those coming to this campus as students for the first time to make the transition as quickly and as comfortably as possible. You will find Michigan State University different from any other place you have lived, because not only are universities different from other communities, but also Michigan State University is different from all other universities in many respects.

Michigan State is like others in that the education of young people is its purpose for being; all other activities here are related to that central purpose, directly or indirectly.

This University is organized somewhat differently from all others, and our rules and policies are different. This handbook should help you become acquainted with them rapidly and, I hope, painlessly.

But these are relatively minor differences. The big difference is in the spirit of Michigan State, about which you have already heard a great deal, and about which I hope you will learn a great deal more while you are here. This University began, back in 1855, as the pioneer of a new educational movement that was to sweep America within a few decades, and it has never lost its pioneering spirit.

Some people bemoan the fact that we have so few traditions — perhaps we could do with more. But what many fail to recognize is we have a tradition as old as the University itself — the tradition of courage, and enterprise, and inventiveness, and determination to make the good even better. We have the tradition of trying to do superlatively well in everything we undertake. We invite you to live and work here in those same traditions. By doing so, you can make your college years the most exciting and most rewarding years of your life, as they are intended to be.

This University is maintained by the people of Michigan to offer educational opportunity of the highest quality to young men and women who are gifted with intelligence and are highly motivated. You who have qualified for admission will now determine for yourselves what use you make of that rare opportunity. We have confidence that you will use it well.

JOHN A. HANNAH
President

4 The Spartan



PART ONE

Getting Ready to Come to Michigan State

YOU UNDOUBTEDLY KNOW a great deal about Michigan State already. You have read the letters and brochures and have begun to study the *Michigan State University Catalog*. You may have talked with a Michigan State student or a professor or an admissions counselor. You may have visited the campus.

And you have begun to think of yourself as a Michigan State student and to figure out what you want from your experience here, where you will fit, what opportunities you will have.

You have begun, you see, to orient yourself.

ORIENTATION TO MSU

How do you become a Spartan? You are one already. You have your Certificate of Admission! As a new Spartan, however, your next concern is your first registration for courses. For Fall Term, 1964, classes will start on Thursday, October 1. Between now and then you will be expected to complete certain activities, and you may choose other activities to get you ready for your first classes. You may come to the campus during the summer to attend a Counseling Clinic, if you are a freshman, or a Pre-registration Conference if you are a transfer student. Along with all other entering undergraduate students you will participate in Welcome Week, September 26-30.

COUNSELING CLINICS FOR BEGINNING FRESHMEN

If you are a beginning freshman you will probably attend one of the twenty-one Counseling Clinics to be held this summer. About four out of five new freshmen will.

You have been sent a brochure describing the clinics. Perhaps you have already sent in your application and received your reservation for one of the clinics in which the college of your major interest will be participating.

During the three days of the clinic you will have a group meeting and an individual conference with a counselor. You will complete

your required orientation testing. Using test results and other available information, you will decide which courses and how many courses to enroll for (including honors sections or remedial services). An academic advisor will help you with these decisions. You will enroll, pay your fees, and register for your Fall Term courses. And along the way you will learn something about what to expect in your classes, in your residence hall, and in other aspects of campus life.

There are two things to do before you come to a clinic: (1) Read the description of the orientation tests on page 8. If you will be taking either the mathematics placement test or one of the foreign language tests you may want to do just a little reviewing before you come. (2) Check the brochure "Student Fees and Other Expenses" to see how much money you will need to complete registration. If you will be living in a University residence hall, you may make full payment of your Fall Term fees and board and room, or you may make the first payment on the Pay-As-You-Learn plan. If you will be living at home, you must pay the full amount of your fees. Remember, however, that the \$50 deposit you have already paid applies on this first payment.

Have you applied for housing? You will need to know your residence hall in order to register, since some class sections are taught

Student discusses which courses to enroll in with his academic advisor.



*Some walk to
class. Some bike.*



in the halls. Have you had your physical examination? Your student health record should be mailed to the University so that the Health Service has it on file in case of an emergency during the clinic.

Do you have a question about the clinic? Write the Coordinator of Counseling Clinics, Counseling Center, Student Services Building, Michigan State University, East Lansing, Michigan.

PRE-REGISTRATION CONFERENCES FOR TRANSFER STUDENTS

If you are transferring to M.S.U. from another college or university, you may choose to attend one of the three-day Pre-Registration Conferences planned for August. A brochure describing the conferences more fully and an application blank will be sent to you.

During the conference you will complete your required orientation testing, meet with a counselor to discuss your test results as related to your educational goals, consult with an academic advisor, pay your fees and register for your Fall Term courses. Check the brochure "Student Fees and Other Expenses" to see how much money you will need to register. If you will be living in a University residence hall, you may make full payment of your Fall Term fees and board and room, or you may make the first payment on the pay-as-you-learn plan. If you will be living off campus in married housing, or at home, you must pay the full amount of your fees.

WELCOME WEEK — SEPTEMBER 26-30

Welcome Week — time to get settled in your residence hall, to buy your books, to find the shortest routes to your class buildings, to get ready to go to work.

If you are a freshman who did not come to a Counseling Clinic, you must arrive on Saturday, September 26, in time to attend an orientation meeting at 10:30 a.m. You will spend the rest of the day taking the required orientation tests. Monday through Wednesday you will complete your other orientation activities and register for your classes.

If you attended a Counseling Clinic, or if you are a transfer student, you may arrive Saturday, if you wish, but the first activity planned for *all* entering students is on Sunday. Convocations, college meetings, waiver examinations, residence hall orientation, introduction to the library, and more. Yes, you will find these days full and useful, even if you have been here during the summer.

WELCOME WEEK PROGRAM

Your *Welcome Week Program*, giving the complete schedule of activities for the week and last minute instructions for your arrival, will be mailed to reach you about September 15.

ORIENTATION TESTING

Either during a clinic or conference, or during Welcome Week, you will take the orientation tests. You will get the results right away so that you and your counselor and advisor can use them in your planning — both for your Fall Term and your long-range educational program.

You might like to know something about these tests. The academic aptitude test will check your background in vocabulary, general information, and numerical areas. The reading test is based on passages typical of the reading you will be doing in your college courses. The English test covers spelling, capitalization, grammar, punctuation, sentence structure, and organization.

Since the University requires proficiency in elementary arithmetic skills, you will take the M.S.U. arithmetic test, unless you take the mathematics placement test. You *must* take the mathematics placement test before you can enroll in your first college math course. The test covers your knowledge of algebra, and your score will determine which course you start in.

Which majors require college math? You can check the requirements for your major in the M.S.U. Catalog. In general, it is required of all majors in the Colleges of Agriculture, Engineering, and Veter-

inary Medicine; all in Business except Business Education; all in Natural Science except Nursing; Foods and Nutrition Research in Home Economics; Economics, Police Administration, Urban Planning, and Landscape Architecture in Social Science.

You may also decide to take one of the foreign language placement tests. If you have studied a foreign language in high school and wish to enroll for an advanced course in that language, or wish to use it to meet the foreign language proficiency requirement for the Bachelor of Arts degree in the College of Arts and Letters or of Social Science, you should take the placement test in that language. It might help to review a little before you take the test.

(If as a transfer student, you are transferring college credits in English, mathematics, or foreign language, you do not need to take the test in that area.)

What do the test results mean to you? They provide one of the means by which you plan a program suited to you. Your scores can be compared with those of other entering Spartans to help you decide how many credits you should take, what your academic strengths are, whether you are eligible for honors sections or should attempt to accelerate, or whether you need to improve your basic skills.

WAIVER TESTING

Waiver examinations to exempt you from a required course are offered in a number of areas at the beginning of each term. Your first opportunity to take a waiver will come during Welcome Week. You will find more information about waivers and how to prepare for them on pages 24 to 25.

BUDGET AND FINANCES

Using the information on pages 30 and 31 of the Catalog, or in the "Student Fees and Other Expenses" brochure, you have probably already done some estimating and planning of how to meet the major expenses of your first year at M.S.U. However, you may also need to take a look at some of the things which are usually included under spending money.

There is no such thing as a typical budget for these items. You need to figure your own. What do you now spend for dates, movies, snacks, haircuts, clothing? Do you now pay for your own toothpaste, laundry, drycleaning, bus fare? Residence hall dues (about \$6) are used for newspapers, magazines, television sets, term parties — and a variety of other things which are of general usefulness and add to the comfort and enjoyment of the students in the hall. You will need to include the cost of travel home for vacations and holidays. Most campus functions are open to students without charge. It is possible



Entrance to Case Halls, one of the new classroom-residence halls.

to have a rich and full University experience with a minimum allowance. But your best measure of what you will need is to begin with what you now spend and add enough to cover the things you take for granted at home and the necessary expenses such as travel.

How will you handle your money? You will need to pay your fees when you register — cash, check, money order, bank draft. M.S.U. doesn't send the bill to your parents. You can deposit money for safe-keeping in the University Business Office; you can open a checking account in one of the commercial banks in East Lansing or Lansing; you can write checks on your home bank, or your parents can send you money. If you have never before had a checking account but want to use one now, take time to learn what is involved before you come.

SCHOLARSHIPS

All scholarships for new students have already been awarded. Do you have a scholarship? If your scholarship came from University funds, it will be credited to your fees when you register. If your scholarship is supplied by a source outside the University (except the National Merit Scholarship Corporation), it is up to you to be sure that the money has been sent to the University at least thirty days before you register.

Inquiries about scholarships should be directed to the Office of Admissions and Scholarships, 259 Student Services Building.

WHERE YOU WILL LIVE

Knowing where you will live while you are at the University is an important part of making your plans to come. Most new students will spend their first year at Michigan State in a University residence hall. This is a University policy (exceptions: students commuting from home, married students, veterans with at least a year of active service, students 21 years of age, transfers admitted to upper school) based on the conviction that the experiences in residence hall living contribute significantly to the total educational experience of the student. The most recent residence halls constructed on the campus include classrooms, laboratories, and faculty offices, along with the usual residence hall facilities to provide the student a coordinated living-learning experience.

During your years at the University you may have the opportunity to learn the advantages of different types of residence hall facilities. This first year you will have been assigned to the available space on the basis of when your housing application was received, what hall preferences you indicated, and what space was available. Next year you may request a different type of housing if you prefer. Housing assignments are made at the Housing Assignment Office, 112 Brody Hall.

The type of hall most talked about at present is the co-educational classroom-residence hall already mentioned. Common classroom, dining, and recreational facilities join the men's and women's wings of these halls: West Akers, North Case, East Fee, East McDonel, West Wilson and South Wonders for the women; East Akers, South Case, West Fee, West McDonel, East Wilson and North Wonders for the men. Snyder and Abbot Halls for men share common recreational and dining facilities with Phillips and Mason Halls for women, without classroom facilities.

In the Brody Group of residence halls men live in Armstrong, Bailey, Bryan and Emmons and women in Rather and Butterfield. The residents of all six halls use Brody Hall for dining and recreational facilities.

The more traditional residence hall accommodations for women are found in Campbell, Gilchrist, Landon, Mayo, Williams, and Yakeley; whereas VanHoosen offers an unusual living experience with 32 apartments, each accommodating four to six women, although freshman women are not eligible for these.

East Shaw and West Shaw are both men's residence halls sharing common dining and recreational facilities.

A head advisor lives in each residence hall to counsel with and assist the students. Depending on the type of hall, the advisor is assisted by an assistant advisor or graduate advisors and upper-

*A more
traditional
residence hall
on West
Circle Drive*



class resident assistants. The halls are subdivided into units, called houses, with a resident assistant for each house.

Each residence hall is governed by a council composed of representatives from each house. Residence hall dues, collected from each student at the beginning of the Fall Term, are used to finance scholastic, social, sports, and safety programs and projects, and to purchase books, newspapers and magazines, and recreational equipment.

MARRIED STUDENT APARTMENTS

Cherry Lane Apartments, University Village, and Spartan Village combine to provide 2,056 furnished apartments for married students and their families. You will find further information about eligibility for these apartments on page A-201 of the Catalog.

OTHER HOUSING IN THE COMMUNITY

If you come under one of the exceptions and choose not to live in a University residence hall your first year, you may want to investigate other housing available.

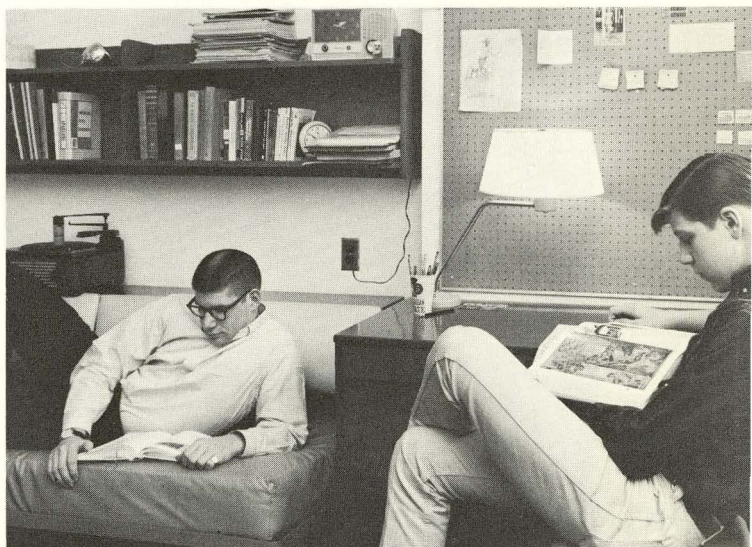
The Off-Campus Housing Office, 101 Student Services Building, lists the facilities available for single men, single women, and married students. All single undergraduate students under 21 are required to live in supervised housing approved by the University as meeting

proper standards of health, safety, sanitation, and supervision. To reserve a supervised room, each student will pay a deposit of \$10 to the householder and sign a one-term rental agreement. The deposit will be held as a breakage fee and is refundable when the student vacates the premises. When a student has signed a rental agreement in a supervised house, he is expected to remain in residence for the entire term indicated in the agreement. Cancellation of this agreement is possible only if, after consulting the Off-Campus Housing Office, it is determined there is evidence of just cause for termination. The University does not reserve off-campus accommodations for students. Householders usually prefer to interview prospective tenants.

All single undergraduate students 21 years of age and over may live in housing of their choice. However, if this housing is not supervised, a letter of parental acknowledgment must be filed with the Off-Campus Housing Office. This letter will be sent directly to the parents upon request of the student and must be returned with the appropriate parental signature.

The men's cooperatives provide another type of off-campus housing. The members of a cooperative own and operate their own houses under the supervision of the Office of the Dean of Students. Men's cooperatives at Michigan State are Beal House, Bower House, Elsworth House, Hedrick House, Howland House, Montie House, Motts House, and Ulrey House. To apply for membership in a men's co-op, a student may submit his name to the house in which he is

*Rooms provide
space for study
and relaxing.*



*Time for unwinding
with friends.*



interested, or place his name on file with the advisor to the Inter-Cooperative Council in the Student Activities Division, Office of Student Affairs.

IF YOU LIVE AT HOME

Many students from the Lansing-East Lansing area will be living at home instead of in a University residence hall. Your needs and problems will be somewhat different from students living on campus.

You will need to work a little harder at becoming acquainted than do students in the halls. Many area students find that living in the residence halls during a Counseling Clinic is a good way of beginning friendships with students who will be living on campus.

Students Off Campus, an organization for students living in the area, provides an information service and a hospitality program during Welcome Week, and an opportunity to affiliate with the organization for activities throughout the year. The Union has set aside a room specifically for the use of off-campus students.

If you need it for transportation to the campus, you may register your car and drive it to the campus. You will need to check the regulations on access routes and parking areas open to you.

It might also be wise to give some thought as to what changes in your living situation at home will help you in your over-all adjustment as a student. Do you have an adequate place for study, quiet, free from interruption? Perhaps you and your parents need to talk about your responsibilities at home in relation to what is expected of you as a student and how your financial needs differ from what you needed in high school. A mid-term evaluation of yourself as a student and as a family member might be useful.

Remember that the campus resources are for you as much as they are for any student.

TRAVEL TO MSU

How will you be coming to the campus?

By private automobile? You will find route markings to East Lansing and Michigan State easy to follow no matter from which direction you are arriving. Your map of the campus in this hand-book will help you find your first campus stop once you are in East Lansing.

By bus? The East Lansing bus terminal is just a few blocks from the campus. Some people prefer to use the Lansing bus terminal and come to the campus by city bus or taxi.

By train? Both railroads with passenger service have their depots in Lansing. City bus or taxi will bring you to the campus.

By air? If you arrive by plane, you will land at the Capital City Airport and take a taxi directly to your campus destination.

Spacious lounge in Case Halls where students meet to visit or study.



ABOUT CLOTHES AND OTHER PERSONAL BELONGINGS

Be selective.

You will want to have with you those things which you will actually use, but you don't want things which will clutter your room and be an irritation to both you and your roommate.

Michigan State students are noted for their casual, well-groomed look. Good taste and style are more important than quantity or cost of clothes. Your appearance is important because you are more self confident when you know you look right and because first impressions often pave the way for friendships.

You will not need a lot of new clothes just because you are starting college. Clothes that seem *old* to you will be *new* to new friends. But bring only those you know you will wear. If you didn't like that sweater enough to wear it at home, you don't want it taking up storage space here. Some students like to save enough of their clothes budget until they come to campus so that they can add an item or two in the current campus fashion.

On the way to a term party.



Linens, towels and pillows are furnished, but you should bring blankets. Electric irons and hair dryers are available in the halls, but you may bring your radio. Lamps are furnished in some halls but not in others. You will need to check the information you receive about your assigned hall. You may want to wait until you arrive so that you and your roommate can coordinate purchases of bedspreads and other accessories.

Automobiles. Leave your car at home if you are a freshman.

MAIL, PACKAGES, LUGGAGE

Letters and parcel post packages should be addressed to you at your assigned residence hall.

Many students use Railway Express to send a trunk or heavy luggage. If you wish to do so, send your trunk a few days ahead of your planned arrival for Welcome Week, address it to yourself in care of your residence hall, and *prepay* the charges. Do not have it arrive before September 21.

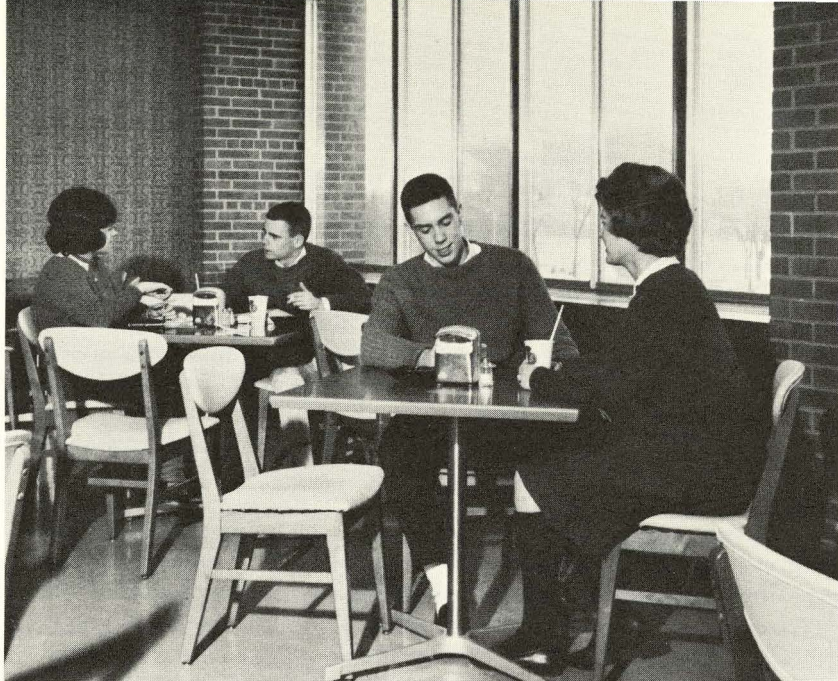
THE CAMPUS

An important part of becoming a Spartan is getting to know the campus and the community. Michigan State University is an integral part of the city of East Lansing and of the Lansing metropolitan area.

It is not enough for you to locate your own residence hall, your classroom buildings, and the library. Study your campus map to get an over-all picture of the extent of the facilities and resources provided. The Auditorium, Fairchild Theatre, and the Music Building provide the settings for concerts, lectures, drama, foreign films, and travel films. Kresge Art Center, the Museum, and the Planetarium attract many visitors to their exhibits. M.S.U. provides for spectator sports in the stadium, Jenson Field House, and Demonstration Hall, but perhaps more important is the availability of facilities for maintaining your physical fitness, regardless of whether you are enrolled in a class in physical education. There are the men's and women's intramural buildings with their swimming pools, gymnasiums, and handball courts, the tennis courts and athletic fields, and the golf course.

The Union Building is the center for many campus activities — dances, club meetings, bowling and services. The Union Cafeteria and the Union Grill, a browsing room, a music room, the United Nations Lounge in which foreign and United States students gather, private dining rooms, the campus lost and found service — all of these and more are located in the Union.

Kellogg Center for Continuing Education, which is headquarters for all extension programs and conferences, provides dining and hotel



Case Halls grill.

facilities which may be used by campus visitors. Many parents of students choose to stay there when they come to the campus.

To add to your appreciation, you might like to read the description of the campus on pages 14 to 16 of the M.S.U. Catalog.

An interesting sidelight: There are 40 miles of streets and roads and 54 miles of walks and paths on the campus, most of them laid out to make it possible for you to get as directly as possible from one part of campus to another and at the same time to accentuate the beauty of the campus landscaping.

In addition to the food services in the Union, the International Program Center, Kellogg and the residence hall cafeterias, there are thirteen grills or snackbars located in various parts of the campus. You won't have far to go for that evening sandwich or mid-morning coffee.

THE COMMUNITY

Across Grand River Avenue the East Lansing business district borders the campus. Here you will find book stores, clothing stores, banks, drug stores, barber and beauty shops, a department store, the post office, laundry and dry cleaning establishments, professional offices. The map of East Lansing in the Catalog shows the locations of the churches and religious centers which serve the whole community. The fraternities and sororities maintain their houses in the heart of the attractive residential district. Motels located at the outskirts of the city provide lodging for many of the visitors who come to the campus.



Kresge Art Center.



M.S.U.'s outdoor swimming pool.



*A classroom discussion is continued informally
in a Wilson Halls lounge.*

PART TWO

Becoming a Student

ALTHOUGH you are already a Spartan, you have only begun to become a Michigan State student. It might be said that becoming a student is your goal for your entire university career, for the whole of the process of education can be included in that phrase.

It is important to emphasize the continuing action implied in *becoming*. In the University you will continue the learning and the learning-how-to-learn that have been a part of your life since you were born. The setting will be different. The pace will be different. You will need to adjust to the new setting and the new pace. You will also need to acquire new skills, attitudes and achievements, along with those you already have, and to draw more intensively on your innate ability than you have in the past.

You should not expect that attending your first college class will produce a miraculous transformation, nor does the University expect it of you. In most respects you are still the person you were when you took your final examinations at the end of your last school term. The University recognizes that its freshmen have only recently been high school students; it provides the ways and means for them to become university students. There will be individual differences among the students with respect to how quickly and how effectively they move toward desired educational goals.

What are the desired educational goals? There is no pat answer to that question. For the University they must encompass the goals of the society which maintains it, the people of Michigan, the Board of Trustees, the faculty, the student body – and more than these, the goals that are fitting for an institution with world-wide responsibilities. They must include also the goals of the individual student: what he wants from education, his personal growth and development, his vocational aspirations – but also his responsibilities to society. The goals of the institution and the individual are not identical. In some instances they may even seem to run counter to the other. For the most part, however, the institutional structure permits the individual a wide latitude in the ways in which he meets institutional requirements and at the same time meets his own needs.

You have the task of finding yourself as a student within the structure provided by the University. It has established curricula and majors, courses and credits, examinations and grades. It provides teachers, classrooms and laboratories, libraries, residence halls, and many other services and facilities. You will find that some rules and requirements are an integral part of the structure. Already you are aware of the required orientation activities. You will need to become acquainted with general education requirements, course prerequisites, and degree requirements. Sometimes it may seem that the structure does not allow for individual variation. Yet it is the individual who is educated, not the class or the student body. The University has the task of providing you — and as many others like you as want it — the ways and means of becoming an educated person. Within the structure you can find the built-in flexibility which allows you to enrich and deepen your educational experiences.

As an example, most of the curricula in the University are planned so that the typical student will carry 15 credits per term, will attend

Some of your classes are right in your own residence hall.



school three terms a year, and will graduate in June of the fourth year. However, you may carry as few as 12 credits or as many as 18 (and after your first term your dean may grant you permission for more). Some students will attend four terms a year and thus be ready for graduation in three years. Other students will spread their courses over five years. You may study independently and take waiver examinations. You may accelerate by taking examinations for credit, thus completing your bachelor's degree in less time. If you are eligible, you may enroll for honors sections of courses. If you do well enough academically, you can earn the increased flexibility of course choice as an Honors College student. You may choose a major with a carefully prescribed course of study leading toward a particular professional goal, or you may choose a major which gives you a wide range within which to map out your own course of study.

The University aims to provide you with an opportunity for an education which meets a standard of high quality and to recognize individual differences among students so that you may select from many alternatives as you pursue your educational goals.

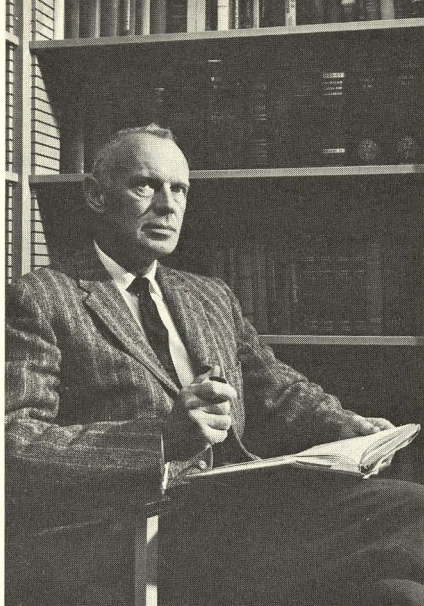
The alternatives you select will depend on what you know about yourself in relation to the University. Counselors and academic advisors will help you to interpret the relevant data, but you will have to make the decisions.

If you are confident about your academic ability and if you will be free to devote full efforts to your studies, you may want to take the maximum number of credits per term, to enroll for honors sections, and to take waiver and acceleration examinations.

On the other hand, regardless of the total number of credits required or suggested each term by your major, it may be wise for you to reduce your credit load, particularly in your first term:

- if you feel that you have not yet developed good study habits;
- if any basic learning skill, particularly your skill in reading, is below that of the average college student;
- if your health or physical condition might limit your studying;
- if it will be necessary for you to have a part-time job;
- if you have other problems or obligations that will interfere with your study schedule.

In the foreword President Hannah has pointed out that Michigan State is organized somewhat differently from other universities. Some of the organizational differences have an immediate effect on you as an entering student. University college is one of these.



*Edward A. Carlin,
Dean of University College.*

THE UNIVERSITY COLLEGE

The University College is designed to provide for you, regardless of your major field or vocational aspirations, a core of rigorous courses in general education. Four of the University College courses — American Thought and Language, Natural Science, Social Science, and Humanities — are required in all majors that lead to a bachelor's degree. These courses represent approximately a fourth of the credits you will need for graduation and are usually taken during the freshmen and sophomore years. This common core permits you a great deal of flexibility in selecting a major or changing a major — particularly during your first two years.

If you are a transfer student, you must still fulfill the requirements, but your credits will be evaluated to give you credit for the appropriate University College courses wherever there is comparable work.

The University College Office of Student Affairs is concerned with the academic progress of all University College students. You will find the personnel interested in helping you with information and advice relative to various academic problems and decisions.

WAIVER EXAMINATIONS IN UNIVERSITY COLLEGE COURSES

Recognizing that students vary in their background preparations to meet the general education requirements of the University College courses and in their capacity for independent study, the University College makes it possible for students to be excused from the requirement to take a particular course by making a satisfactory score on a waiver examination in that course.

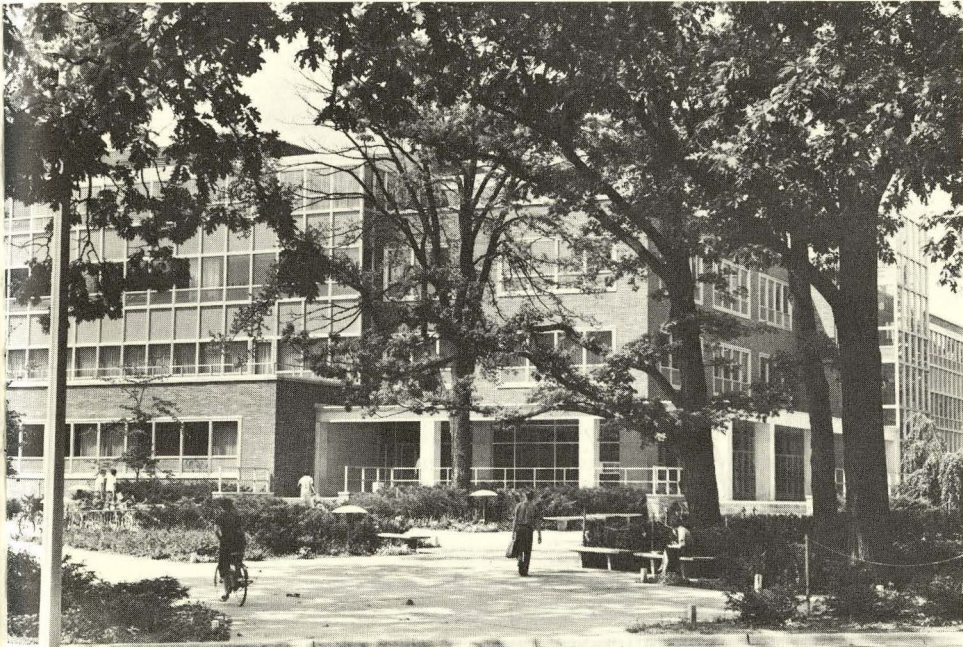
Waiver examinations for all University College courses are given during Welcome Week and during the registration period each suc-

ceeding term. A student may take from one to three waiver examinations at one time. The examination for any course must be taken prior to the time the student would normally enroll in that course. For example, since American Thought and Language and Natural Science are normally taken in the freshman year, a waiver examination for ATL 111 or NS 181 should be taken in your first term as a freshman, ATL 112 or NS 182 in your second term, and so on. No waiver examination may be attempted more than one time.

Neither grades nor credits are given for waiver examinations. If you make the required score, your record will show that you have waived that particular course; otherwise no entry is made. The chief advantage to waiving a course is that you may then elect a course which otherwise might not be included in your program.

Waiver examinations require preparation if you are to be successful, because they are based on the content of the course. Information about the materials to be studied may be obtained at the University College Office of Student Affairs, 170 Bessey Hall. You must apply to that office for permission to take the examination at least two weeks before the date of the examination.

M.S.U. Library.



ACCELERATION EXAMINATIONS IN UNIVERSITY COLLEGE COURSES

The University College also recognizes differences among students by providing those eligible an opportunity to accelerate in University College courses. This means that you may receive credit for some part of a course in which you have not been enrolled by writing a regular term-end examination and earning a grade of "A" or "B". Permission to take an acceleration examination is obtained from the University College department which offers the course. You may become eligible either by earning superior grades in the first term of the course, or by making an exceptionally high score on the waiver examination. If you are interested, you will find more information on page 61 of the Catalog, or you may consult with the University College Office of Student Affairs, 170 Bessey Hall, after you are on the campus.

WAIVER EXAMINATIONS IN CHEMISTRY

If you feel that you have an unusually good background in chemistry, you may want to try to waive the beginning college chemistry course. Waiver examinations will be offered in Chemistry 111 and 112, and 101 and 102 during Welcome Week. If you make the required score, you will be eligible to enroll for the next course in the chemistry sequence. For information about the materials to be studied and for permission to take one or more of the waivers, you should write to the Department of Chemistry, 128 Kedzie.

ADVANCED CREDIT EXAMINATIONS

It is possible to earn credit by examination in other courses as well as in the University College courses. The procedure to be followed is outlined on page 37 of the Catalog.

HONORS COLLEGE

Another of the distinctive features of Michigan State organization is the Honors College. You have already had a chance to learn about the Honors College through the M.S.U. Catalog (page 42) and the newsletters. It is one of the major ways in which many M.S.U. students individualize their programs. If you finish your freshman year at Michigan State with a B plus average, you may enter the Honors College. (If you are a transfer student with a B plus average, you become eligible for Honors College if you earn a B plus during your first term here.)

If you are interested in the Honors College, you are encouraged to consult with the director, Dr. Stanley J. Idzerda, in the Honors College office, 404 Library, soon after you come to the campus.

*Learning research
techniques.*



HONORS SECTIONS

Many departments will designate certain sections of certain courses as honors sections. This means that students are selected for these sections on the basis of criteria established by the department. For advanced courses the criteria may be superior performance in the preceding course, or being an Honors College student.

Several departments offer honors sections in courses open to freshmen. Here the criteria for selection are your orientation test scores and your standing in high school. When you are given the results of your orientation tests, you will also be told whether you are eligible for one or more of these honors sections.

ROTC

If you are a freshman man, you will want to give serious thought to the opportunities offered in the Army and Air Force Reserve Officer Training Corps. As a male freshman you are required to register for and satisfactorily complete the ROTC Orientation Course — ROTC 100; however, you may also enroll directly for either Air Science or Military Science, in which case the orientation requirement is met within the course.

You will find information about ROTC on pages 39 to 42 of the Catalog. You will also be able to consult with staff members from the Army and Air Force programs during Counseling Clinic or during Welcome Week before you register.

SELECTING YOUR MAJOR

At the time that you made your application to Michigan State, you indicated your preference for a major or program offered here, or you indicated that you had no preference. The letter which accompanied your Certificate of Admission shows how your preference was recorded. A freshman planning to major in mathematics will find that he is listed as University — Natural Science — Mathematics; whereas a junior in mathematics is listed as Upper — Natural Science — Mathematics. Students with fewer than 85 credits are dually enrolled in University College and in the college of their major. Those with 85 or more credits are shown as being in upper school in the college of their major. If you have indicated a major preference, you will have as your academic advisor a member of the faculty of your major and college.

If you have not decided on a major, you have been admitted as University — No Preference. Your academic advisor will be a member of the faculty of one of the University College departments.

How important is it for you to have selected a major? The answer to this depends on you and where you are in your educational and vocational development. Some students have their goals defined in such a way that it is appropriate for them to begin their University career in their chosen major. For other students it may be more appropriate to delay declaring a major preference until they have had a chance to explore the University curricula and to test their interests in several areas. The fact that a fourth of the Honors College sophomores are "no preference" suggests that many superior students with a wide range of interests find this classification useful.

You may change your major. If you do not now want the major preference to which you were admitted, you may change to your new preference during the Counseling Clinic (or Pre-Registration Conference for Transfers) or during Welcome Week. Either way you will have an opportunity to talk to a counselor about the change before you make it. You may make it before you register for your classes, or you may change it later.

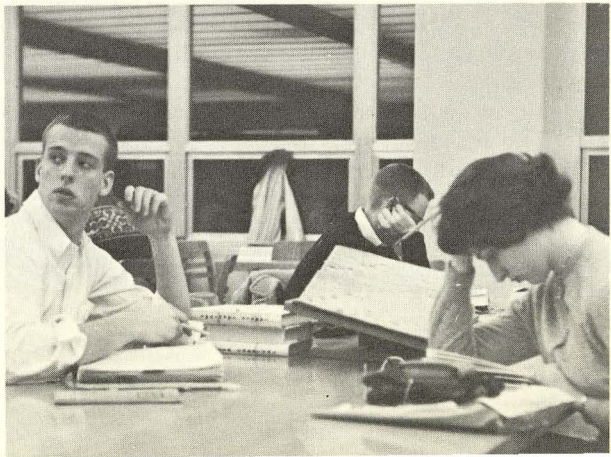
It is no disgrace to change your major preference. One of the reasons that freshmen and sophomores are in University College is that this is a period during which the student can test the appropriateness of his choices. The University College courses provide a core of credits applicable to all majors. The experiences of your first

year or two of college give you information about areas with which you could have had no previous contact, about courses or curricula which are different from what you expected, about your own capabilities and interests, and about the varied opportunities related to different choices.

You will have many resources available at M.S.U. to help you establish your educational and vocational goals. Choosing goals and working toward them is a lifetime process. You have already been doing this in many ways in your choice of high school subjects, of activities, of hobbies, of reading, and of part-time jobs. Your decision to come to M.S.U. is another step in the process. It was based on many previous actions and will affect many future actions. You will continue the process through your experience here.



Bessey Hall where you will be taking a number of University College courses.



The Library is a favorite place to study.

*John A. Fuzak
Dean of Students*



OFFICE OF THE DEAN OF STUDENTS

It is not only through the colleges that the University evidences its concern for the individual student. Independent of the academic organization of the University, but closely integrated with it, is the whole area of personnel services. You should know about these services and how they can be of help to you. Most of them are included under the Office of the Dean of Students.

The Dean of Students of the University has as his area of responsibility the student personnel services of the University. These include a broad range of functions and facilities ranging from specialized services such as the Health Center and the Counseling Center to the general areas of supervision of residence hall programs and advising of student organizations.

The Office of Student Affairs as an administrative unit in the Dean of Students Office coordinates the programs of the following three divisions: Student Activities and Organizations, Residence Hall Programs, and Financial Aids. The Student Activities and Organizations Division is responsible for the advisory program to the various branches of student government, fraternities and sororities, cooperatives and religious living units, and certain all-university events such as the Water Carnival. In addition, the Off-Campus Housing Office is a part of this Division. The Residence Hall Programs Division is responsible for the advisory program in all residence halls. Generally this includes advisory responsibility for governing groups within the residence halls in planning social, recreational and educational activities. The Financial Aids Division is responsible for administering the various student loan programs available at Michigan State University. Students withdrawing from school or who are referred for disciplinary or personal problems are also a concern of the Office of Student Affairs. All of the above named offices are located in the Student Services Building.

COUNSELING CENTER

One of your resources for assistance throughout your University career is the Counseling Center.

Are you concerned about your choice of a major or a vocation? Just talking about it with a counselor may be what you need to clarify your thinking so that you can reach a decision. If that is not enough, your counselor and you may select tests to appraise your abilities, interests, or personality characteristics. Whether or not you see a counselor, you may make use of the Library of Occupational Information which the Center maintains.

Are you having difficulty with your course work? Do you have a personal problem that is interfering with your work or otherwise causing concern? Here again, talking with a counselor may help you gain insight and find possible solutions.

You can make an appointment with a counselor through the Center receptionist either by phone (355-8270) or in person. The Counseling Center is located in 207 Student Services Building.

STUDENT EMPLOYMENT

If you are in need of part-time employment while attending school, you should consult the Student Employment Service of the Placement Bureau, 142 Student Services Building. This service is designed to cover all areas of student part-time employment on and off

Placement Bureau.



CITY OF EAST LANSING

MICHIGAN STATE UNIVERSITY
CAMPUS MAP

0 100 200 400 600 800 1000 1200 1400 FT

BUILDINGS IN VARIOUS STAGES OF
CONSTRUCTION AND PLANNING

BUILDING INDEX

Bldg. Abbr.	Index
A-1	Landscape Architecture G-12
A-2	Pack. Lab. — Landscape Arch. G-12
A-3	Audiovisual Center G-12
A-4	General H-12
AB	Administration Building D-13
AE	Agricultural Engineering Bldg. J-15
AGH	Agricultural Hall D-14
A&R	Akers Halls, Forest H & Alice K-28
ANH	Anthony Hall J-14
AUD	Auditorium F-16
B-3	Psychology H-13
B-4	Forest Products H-13
BC	Biochemistry L-21
BODY	Brady Hall D-2
BH	Berkey Hall C-15
B & U	B & U Service Building N-14
CB	Conservation Building D-14
CC	Computer Center F-13
CME	Chemical Engineering Bldg. F-13
CMY	Chemistry K-20
CSE	Case Halls, Albert & Sarah K-12
CTN	Cyclotron K-22
DH	Demonstration Hall F-7
DP	Dairy Plant J-15
EB	Engineering Building J-13
EBH	Bessey Hall G-15
EBR	Exper. Biology Research Center K-16
EH	Erickson Hall H-14
EPL	Exper. Psychology Laboratory G-5
EPP	Eppler Center H-18
EUS	Eustace Hall C-14
FB	Forestry Building D-14
FDS	Food Science (Proposed) L-18

FEE	Fee Halls, Harry A. & Jessie T. M-28
FOR	Forestry and Conservation (Proposed) M-18
FSL	Food Science Laboratory D-15
FST	Food Stores R-12
GH	Gilmer Hall E-16
GO	Graduate Office B-10
HC	Horticulture Building C-15
HE	Home Economics Building B-12
HG	Horticulture Greenhouse D-15
HMH	Home Management House C-16

IC	International Center I-17
JB	Journalism Building D-14
JF	Jenison Fieldhouse D-6
JG	Jenison Gymnasium E-6
JF	Judging Pavilion I-14
KAC	Kresge Art Center G-17
KC	Kellogg Center D-4
KCL	Kedzie Chemical Laboratory E-14
LA	Library Annex L-27
LIB	Library D-11
MAH	Marshall Hall C-14

MB	Music Building C-10
MCD	McDonel Halls, Karl & Irma I-27
MH	Morrill Hall C-13
MI	Men's Intramural Building F-9
ML	Metallurgical Laboratories E-12
MPB	Music Practice Building C-11
MTS	Meats Laboratory J-14
MUS	Museum D-12
NS	Natural Science Building D-16
OH	Olds Hall E-12
OHS	Olin Health Service B-14

PAC	Packaging (Proposed) N-16
PL	Packaging Laboratories H-13
PM	Physics-Mathematics Building E-17
PR	Parking Ramp J-21
PRL	MSU-AEC Plant Research Laboratory M-21
PSG	Plant Science Greenhouse L-16
PTA	Planetarium J-21
PYR	Psychology Research G-22
QON	Quonsets G-6
R-4	Residence Hall No. 4 (Proposed) L-29

SSB	Student Services Building D-16
TEC	Technorama (Proposed) O-19
TV	WMSB (Television) F-5
UB	Union Building B-12
VC	Veterinary Clinic M-24
WH	Wells Hall E-12
WI	Women's Intramural Building D-9
WIL	Wilson Halls, Mathilda & Alfred M-11
WON	Wonders Halls, Wallace & Grace K-10

campus. Work opportunities listed with the bureau include clerical, library, food service, labor, skilled trades, delivery service, janitorial, and selling jobs.

For students seeking summer employment, the bureau maintains a list of summer job opportunities at camps, resorts, and in business and industry.

Whether you should work and how much you should work depends on your individual circumstances—your academic program and your financial resources. When it is possible, it is usually advisable for a freshman not to work his first term but to allow himself time to find himself academically and determine how many hours a week he can afford to work. It is impractical to attempt to earn total expenses while carrying a full academic program.

Students employed by the University may work no more than 20 hours a week unless they have special permission from the Dean of Students.

VETERANS AND WAR ORPHANS

Veterans and war orphans going to school under one of the various public laws may consult the Veterans Administration Office, 14 Student Services Building, for educational and vocational counseling and assistance with other problems relating to the Veterans Administration. The office is open from 8:00 to 11:45 a.m. and 1:00 to 5:00 p.m., Monday through Friday each week.

LOANS

Michigan State maintains a loan service for students needing assistance in meeting payments for tuition or board and room. If you need a loan, you become eligible for one after you have been enrolled for one term and have achieved a "C" average or better. A maximum of \$150 may be borrowed during your first year. All loans bear an interest rate of 6 percent, unless they are paid back within 90 days. Loans by the National Defense Education Act, the United Student Aid Fund, and the Michigan Higher Education Assistance Fund are also handled through this office. Further information may be obtained from the Financial Aids Division, Office of Student Affairs, Student Services Building.

HEALTH CENTER

The Olin Memorial Health Center provides facilities for students in need of medical, acute surgical, or psychiatric care. Office hours: Monday through Friday, 8:00 to 11:00 a.m. and 1:30 to 4:30 p.m.; Saturdays and Sundays for emergencies and urgent cases only.

All students regularly enrolled in the University and taking seven or more credit hours are entitled to health service during the term in



Olin Memorial Health Center.

which they are enrolled. Any student, who has been eligible for care in the immediate past fall or winter term, may use these services during the winter or spring recess, provided he intends to enroll in the subsequent winter or spring term. A student who utilizes the facility during a recess period and then fails to enroll for the subsequent term will be billed for the services rendered.

No fee is charged the student for a visit to the Health Center if the visit occurs during the hours of 7:00 a.m. to 7:00 p.m. Students requesting services after 7:00 p.m. and before 7:00 a.m. are charged a service fee of \$1.00 for that visit.

All medications and medical supplies are dispensed at a cost plus a reasonable fee. X-rays are provided on a cost of the film basis.

The services of the Departments of Mental Hygiene and Physiotherapy are provided for a "per visit" fee which is specifically established for each case and varies with the extent and type of services.

Students who have procured, at their own expense, special medications or allergy vaccines, may have the scheduled administration of the products performed at the Health Center for a minimal service fee.

The University does not pay for ambulance service, unless the need for such service arises from injuries sustained through classroom work, participation in scheduled intramural sports events, or University employment. The ambulance fee in all other cases is charged to the student involved.

Students who are too ill to attend classes are hospitalized in the University hospital under the care of Health Center staff physicians.

There is no charge for the hospital room and meals up to a total of 40 hospital days per student in any one school year. After a total of 40 hospital days has been surpassed, a fee of \$12.00 will be made for each additional day. Consultants are called upon the recommendations of the staff physicians and their fees are charged to the respective students. All surgeon's and anesthetist's fees are charged to the respective students.

Parents are notified by the Health Center, at once, through a person-to-person long distance telephone call whenever a student is hospitalized for any of the following reasons:

1. serious or significant illnesses.
2. surgical observation or emergency surgery
3. traumatic cases (auto accidents, significant falls, etc.)
4. prolonged hospitalization anticipated
5. significant emotional upsets

If any student is in the hospital 72 hours after admission and the respective parent has not been notified because the case did not appear to fall into any of the above categories, the parent is then notified by phone, unless he has visited the student during the 72-hour post-admission period.

HEALTH INSURANCE

Since 1956 the All-University Student Government has made available a low-cost group policy hospitalization plan. A brochure explaining the policy and an application card is sent to all new students prior to the beginning of Fall Term. Policy holders are covered while on or off campus and throughout the summer. Married students may include their spouses and families for an extra charge. Additional information may be obtained from the Student Insurance Office, Room 337, Student Services Building.

OTHER RESOURCES

In this section you have been directed toward some of the units of the University which are of vital concern as you begin your education at Michigan State. Other units could well have been included — the colleges and departments in which you will major, the library with its helpful staff, the management of all university facilities. You will find the information about all of these in the Catalog.

The purpose has been to sample rather than to exhaust the list of resources available to you. In most instances you must take the initiative to use the resources available, but throughout the University you will find people ready and willing to help (in fact, specially trained to help) you to become more independent, more self-reliant, and more truly a student.



Hearing great artists perform in the Lecture-Concert series.



Learning about graphic design.

Studying foreign languages in a laboratory.



PART THREE

Your Responsibilities as a Student

ALL SOCIETIES ESTABLISH norms for what is considered appropriate behavior for their respective members. The Michigan State University community is no exception.

By enrolling at Michigan State you agree to observe the standards expected of students by the University concerning both academic and non-academic activities.

In a way the student is entering into an informal agreement with the University. The University agrees to furnish the student an environment conducive to growth and development and to supply classrooms, libraries, professors, co-curricular activities, a lecture-concert series, residence hall programs, and inter-collegiate sports programs — in effect, an environment where the opportunities for educational development are limited only by the capacity of each student. The student agrees to take advantage of the opportunities for improving himself academically and socially and to behave in such a way as to reflect creditably upon the University.

The spirit which resides in this kind of agreement is one of mutual cooperation and teamwork. It requires that all be willing to work together toward the accomplishment of larger goals than either could accomplish separately.

ACADEMIC RESPONSIBILITIES

The University expects of its students that they will strive to achieve the standards established for granting an academic degree. This includes completing a recognized curriculum with satisfactory grades. It means more than this, however; it means achieving these standards in ways which honor the fundamental principles of truth and honesty which are basic to scholarship.

A student who is discovered cheating may be penalized severely by the University. A student who is not discovered could actually incur the more severe penalty, for he is cheating himself out of his education. Attending classes regularly, completing assignments to the best of his ability, planning his schedule to permit adequate time for



*Infractions of student conduct are the responsibility of
AUSG Student Judiciary.*

study, recreation, and rest, facing honestly his own strengths and limitations will give the student a solid base from which to earn an education of which he can be proud.

GENERAL REGULATIONS

Some general regulations formulated by the Board of Trustees apply to all students:

1. *Alcoholic Beverages*

Students shall neither bring, possess, or consume on the campus of Michigan State University, or in buildings controlled by it, alcoholic beverages, including beer. Violation of this regulation is a suspension offense. Students must also observe the liquor laws of the State of Michigan, especially as they apply to: age of the purchaser, furnishing liquor to a minor, transporting liquor in an automobile, or falsely representing age by a minor in a liquor purchase.

2. *Living Quarters*

Men must not enter women's living quarters, and women must not enter men's living quarters, except during a registered open house, or when such quarters are being used as a cloak-room for a registered party.

3. *All-University Social Regulations*

- (a) All group social functions attended by student couples must be registered, with the exception of those functions sponsored by clubs which are attended exclusively by married couples. Registration requires information concerning place, time, and chaperones for the event.
- (b) Overnight social activities are not permitted.
- (c) Weekend social activities must be terminated by 12:45 a.m. Dances scheduled on Saturday night must end at 12 midnight. Mid-week social activities, except banquets, are to be terminated by 8:00 p.m.
- (d) The use of alcoholic beverages at social functions is prohibited. Copies of the complete social regulations and standards for student groups are available at the Student Organization Office, Room 320, Student Services Building. You should become thoroughly familiar with the information contained in this publication.

4. *Automobiles and Parking*

Any student who is enrolled at Michigan State for credit must register any motor vehicle with the Department of Public Safety. Freshmen may not possess or operate a motor vehicle on campus unless they are either married, reside off campus, are twenty-one (21) years of age, or are paralytic.

Unless special permission is acquired, students are restricted to designated parking lots between the hours of 6 a.m. and 6 p.m.

A complete set of the Motor Vehicle Regulations should be acquired by each student during registration, or from the Department of Public Safety. Students should study them carefully, since they are responsible for observance of the provisions.

5. *Falsification of a University Record*

Each student is expected to complete accurately and honestly any University record. This includes information given on registration cards, automobile and bicycle registration, and student identification cards. In addition, each student is re-

quired to report his or her correct address at the time of registration each term. If any change in residence is made during the term, a report of the new address must be filed promptly on forms available in the Off-Campus Housing Office, 101 Student Services Building. Falsification or altering of a University record or failure to report your correct address can result in the cancellation of your registration.

ASSOCIATED WOMEN STUDENTS — WOMEN'S REGULATIONS

Hold it men! Don't pass up this section — it's important that every fellow know about such things as closing hours and signing out. Of course, women students are responsible for being familiar with all the information concerning women's regulations contained in the A.W.S. *Handbook*.

Hours. All women's residences close at 11:30 p.m. weekdays, at 1:00 a.m. on Friday and Saturday, and at midnight on Sunday.

Permissions. When attending All-University functions, such as a concert, which may last beyond normal closing hours, women may sign out for an 11:30 plus permission.

Overnight Absences. Women students wishing to be away from a university residence overnight during the weekend must receive the permission to do so from their parents. Each woman student receives an A.W.S. parental permission card before coming to M.S.U., which her parents will complete for this purpose. Women students are not given overnight permissions during the week, unless such permissions involve participation in official University activities, a necessary trip home, or special emergency circumstances.

Signing out. Women planning to be out of their residence after 8:00 p.m., or for overnight (under conditions described in A.W.S. *Handbook*), must sign their own "sign out" card which will be filed on the main floor of the residence hall. She must include her exact destination so she may be reached in case of an emergency. Exact sign out procedures will be discussed at a meeting the first night the student is on campus. Such information will also be printed in the A.W.S. *Handbook* which will be given to new students soon after arrival.

Guests. Women may have guests only on Friday and Saturday nights. Guests are not permitted during the weekend before final exams.



Members of the Student Congress are elected to represent living unit districts.

PART FOUR

Your Opportunity to Participate

WHETHER it is the All-University Student Government, an interest area club, or a Greek letter society, the opportunity exists for you to participate effectively in governing your own affairs.

ALL-UNIVERSITY STUDENT GOVERNMENT

Coordinating most of the clubs and organizations on campus and serving as the voice of the students is the All-University Student Government (AUSG).

AUSG has had a proud and colorful past. On March 20, 1908, the student body of what was then Michigan Agricultural College held a mass meeting at which they passed the following resolution: "For the future settlement of all class matters and the maintenance of the college traditions and customs, a 'student council' shall be formed."

This was the beginning of student self-government on our campus. Today's All-University Student Government gives the students increased voice and responsibility in their own affairs.

AUSG sponsored the first student-financed, student-administered scholarship fund in the country through a fund-raising ice show, "Silver Blades," in 1957. It was instrumental in the forming of the Big Ten President's Association (for student government presidents) which has now become one of the most successful organizations of its kind.

In 1956, action was taken by AUSG for a low-cost group policy hospitalization plan. This is an especially beneficial plan for the students not covered by family hospitalization plans. (See page 36.)

The AUSG also sponsors and promotes other activities and services, such as a small loans bureau for students, an annual scholarship for some outstanding student, Activities Carnival, and a thermofax and a mimeographing service. Through its programs, AUSG has established a record that is emulated by other student governments throughout the country.

In the past few years, AUSG has earned the respect of faculty and administrators with good investigations of campus problems, and

has considered such issues as class attendance, housing regulations, the loyalty oath affidavit, and class officers. The presentation of these reports to University officials has helped to solve many student problems as they relate to the University.

ORGANIZATION

Elections are held each spring preceded by lively campaigns. Each voting student has a voice in selecting the AUSG president, AUSG representatives, Congress representatives, class officers and other officers of various governing groups.

The president of AUSG, as the chief executive officer and representative leader of the student body, is responsible for the coordination of all three branches of AUSG — The Executive, the Legislative, and the Judicial — and their activities. Working with him in this task are his appointed administrative officers: The Executive Secretary, Chairman of the Executive Board; Administration Vice President in charge of programs concerning the total operation of AUSG; Executive Vice President, and the treasurer who is responsible for the control and maintenance of the budget.

EXECUTIVE BRANCH

The executive branch of AUSG is represented by the President's Cabinet, composed of the directors of the various executive agencies. The Executive Vice President is the director of the Cabinet and it is his responsibility to see that the various programs and services offered by the executive agencies are coordinated and function smoothly.

EXECUTIVE AGENCIES

Academic Benefits. Academic Benefits attempts to create student awareness of the many cultural and intellectual opportunities available at Michigan State. This bureau also sponsors a "Freshman Seminar" which is a series of lectures and discussions designed to acquaint able students with the cultural opportunities afforded by the University.

Campus Chest. Campus Chest is the only legal money-raising body on campus. Its purpose is similar to that of a community chest. The money raised by Campus Chest is given to campus and University related charities. During Winter Term, Campus Chest has its annual fund drive — its best source of money. Events such as Penny Nights and balloon sales also contribute to the fund.

Organizations. Student Government charters nearly 200 campus organizations. The Organizations Bureau is responsible for coordinat-

ing the activities of these organizations. The Bureau puts out Sparta-Guide, Student Organizations Directory, and newsletters to assist the organizations. It is also responsible for chartering new organizations.

Elections. Two All-University elections are held each year in the spring and fall. It is the responsibility of the elections commissioner to run these elections successfully. In addition to administering the election laws, the commissioner gives advice and answers questions concerning the elections.

Orientation. Every student who enters Michigan State comes in contact with the orientation program. The student director of orientation is chairman of the Student Executive Committee on Orientation. This committee is responsible for carrying out much of the program.

Public Relations. The Public Relations Department has the job of making student government and its activities known to the students, administration, community, and other schools.

LEGISLATIVE BRANCH

Student Congress is the legislative branch of AUSG. Its membership is comprised of representatives from living unit districts — residence halls, fraternities, sororities, married housing, and off-campus housing. There is approximately one representative for every 300 students. Members are elected to one-year terms during the spring term election. It is through this branch that the student's voice is heard most clearly; often when student feeling is strong, Student Congress is able to take action which leads to an alteration of existing policy. Action by Student Congress has been influential in changing the name Michigan State College to Michigan State University and in raising funds for the University library.

Each new Congress elects a speaker, a speaker pro-tem, and a secretary from among its membership. The speaker serves a dual function. He leads Student Congress and he is vice president of AUSG. He succeeds to the office of president should such a vacancy occur. He is a member of the Presidents' Cabinet and represents Congress at Spartan Roundtable. The fourth officer of Congress is the clerk, who is appointed by the speaker.

Student Congress acts in numerous areas to benefit the student body and the University. Some of the legislation initiates investigations into problem areas affecting students, followed by recommendations for relieving or eliminating these problem areas; provides student health insurance; establishes eligibility and election laws; sets the AUSG budget each term; charters student organizations and seeks to improve the motor vehicle regulations.

To operate most efficiently and otherwise aid in evaluating pending legislation, Congress has five standing committees: Academic Affairs, Student Rights and Welfare, Congress Business and State Affairs, Finance, and Organizations. Legislation, when passed by Student Congress becomes an ordinance applicable to the whole student body.

The Student Congress, working with the administration and faculty of the University, presents the student viewpoint and establishes cooperation and interaction to the mutual benefit of both the student body and the University. Examples are the Student-Faculty Motor Vehicle Committee and Student-Faculty Social Affairs Committee.

Whenever students are faced with a problem, they should discuss it with their Student Congress representative. He can then take it to Congress for investigation, discussion and action. AUSG is an effective channel of communication between the student and administration.

JUDICIAL BRANCH

The Judicial Branch is established to review action of Congress and the Executive and to hear cases of student appeal. The All-University Judiciary handles cases which are appealed to it from lower courts, such as residence halls, fraternities, sororities, Associated Women Students, and the elections reviewing board. In addition, many disciplinary cases, except those involving remedial or medical treatment, are referred to the All-University Judiciary by the Office of the Dean of Students.

The All-University Judiciary is composed of a Chief Justice and 12 other justices appointed by the president and representatives from the Office of Student Affairs. Decisions reached by the court are recommendations subject to review by the Office of the Dean of Students.

The Student Traffic Appeal Court also acts as an appeal court. The court comprised of student members reviews cases of driving and parking violations and a favorable decision frees the student from any fine.

AUSG plays a major role in the process of educating the student in the basic democratic principles upon which our nation and our University are founded. Every Spring Term students on campus may vote in campus elections and all are invited to attend the Wednesday night session of Congress and even speak out on the issues being discussed. There is also ample opportunity for the student to participate actively in some branch of student government. He may run for Congress from his place of residence, or he may petition for a position in the Judicial Branch. The Personnel Bureau of AUSG arranges, by interview, jobs with the executive agencies.

In any of these branches, the opportunity to learn about people, to work closely with faculty members and to develop one's full potential is a rewarding experience.

MAJOR GOVERNING GROUPS

Each major living area has a governing council which supervises and coordinates activities for its members. In addition, A.W.S. (Associated Women Students) coordinates the programs of women's organizations, recommends changes in women's regulations, and serves as the representative body for the interests of all women students. The major living areas and their governing councils are as follows:

Fraternities	Interfraternity Council (IFC)
Cooperatives	Inter-cooperative Council (ICC)
Men's residence halls	Men's Halls Association (MHA)
Sororities	Panhellenic Council
Religious living units	Religious Living Units Council (RLUC)
Women's residence halls	Women's Inter-residence Council (WIC)

SORORITIES, FRATERNITIES

Greek living units (fraternities and sororities) at Michigan State present an opportunity for students to enjoy the warmth and personal touch of small group living. The emphasis is placed on providing an atmosphere conducive to the development of leadership ability, social fluency and general maturity.

Sororities provide close friendships.



CHAPTERS ON CAMPUS

The following is a list of the member fraternities of the National Interfraternity Conference which have chapters on the Michigan State University campus: Alpha Epsilon Pi, Alpha Gamma Rho, Alpha Phi Alpha, Alpha Sigma Phi, Alpha Tau Omega, Beta Theta Pi, Delta Chi, Delta Sigma Phi, Delta Tau Delta, Delta Upsilon, Farmhouse, Kappa Alpha Psi, Kappa Sigma, Lambda Chi Alpha, Phi Delta Theta, Phi Gamma Delta, Phi Kappa Psi, Phi Kappa Sigma, Phi Kappa Tau, Phi Sigma Delta, Phi Sigma Kappa, Pi Kappa Phi, Psi Upsilon, Sigma Alpha Epsilon, Sigma Alpha Mu, Sigma Chi, Sigma Nu, Sigma Phi Epsilon, Theta Chi, Triangle, Zeta Beta Tau, and Theta Delta Chi.

In addition, the following National Men's Professional Fraternities are represented at Michigan State and are active in campus social life and activities: Alpha Chi Sigma (Chemistry), Alpha Kappa Psi (Business), Delta Sigma Pi (Business), and Phi Mu Alpha-Sinfonia (Music).

The sororities of the National Panhellenic Council at Michigan State are: Alpha Chi Omega, Alpha Delta Pi, Alpha Epsilon Phi, Alpha Gamma Delta, Alpha Kappa Alpha, Alpha Omicron Pi, Alpha Phi, Alpha Xi Delta, Chi Omega, Delta Delta Delta, Delta Gamma, Delta Zeta, Delta Sigma Theta, Gamma Phi Beta, Kappa Alpha Theta, Kappa Delta, Kappa Kappa Gamma, Phi Mu, Pi Beta Phi, Sigma Delta Tau, Sigma Kappa and Zeta Tau Alpha.

The Greek organizations maintain their own housing units in East Lansing, and each has a housemother who acts as hostess and counselor. She has her own apartment in the chapter house and is on call at any time to help members with their problems.

Of course, both sororities and fraternities are under University supervision. Women living in chapter houses must observe the same Associated Women Students and University regulations as followed by students living in residence halls.

Activities of the fraternities are governed by the Interfraternity Council which is composed of three divisions. The President's Assembly is the legislative body, the Executive Council is the coordinating body, and the standing committees make up the administrative body. IFC promotes harmony among the various houses and coordinates fraternity activities. In addition, IFC supervises fraternity rushing and co-sponsors the fraternity intramural program and Fraternity Sing. It promotes such All-University activities as the IFC-PanHel Ball, Greek Feast, and Homecoming display competition. IFC also sponsors several service projects which are supported by the individual houses.



Fraternities offer opportunities for small group living.

Sororities are under the student supervision of the Panhellenic Council. Two members are elected from each chapter to represent their sorority on the Council. This group supervises rushing and coordinates activities of all sororities. The Council also assists in sponsoring Sorority Sing, Homecoming display competition, Greek Week, and Greek community projects. The Sorority Presidents' Association is also part of Panhellenic. Its main aim is to coordinate the activities and establish better relations among the individual chapters.

FRATERNITY PLEDGING

In order that freshmen may have the opportunity to learn about fraternity living, the Interfraternity Council presents a varied informational program during Fall Term.

At the IFC Rush Convocation a student has the opportunity to hear the officers of the IFC explain the advantages and the operation of the fraternity system. Two weekends during Fall Term will be devoted to Rush Smokers. All interested freshmen are divided into small groups which visit every fraternity chapter house on the campus,

providing you with an opportunity to judge the extent and variety of the Michigan State fraternity system.

To be eligible to pledge a fraternity a student must have been in residence at least one term and have established an All-University "C" average, or be a transfer student. However, to become an active member of the fraternity he must have a 2.2 All-University average and a 2.2 average during the term in which he served his pledge-ship. This rule may be waived in the case of a student who has a 2.0 All-University average and a 2.5 average the term he pledges.

Additional information on fraternities is available by writing the Fraternity Advisor, Student Activities Division, Office of Student Affairs.

SORORITY PLEDGING

Sororities at Michigan State have a deferred rush system. Formal rush does not take place until Winter Term. During Fall Term the sororities hold informal open houses to give interested women an opportunity to get acquainted with each of the sororities. Prior to the Fall Term open houses, Panhellenic Council has a registration period when all women who wish to do so sign up for sorority rushing.

At a convocation for all those registered, slides are shown of chapter activities, and booklets containing facts about each sorority are distributed. Each rushee has an upperclass sorority member as a counselor. The rush counselors become their personal friends who are always willing to answer questions and help the coed with any problem she might have.

At the beginning of Winter Term, Panhellenic again holds a rush convocation to give the rushees a preview of the fun-filled rush parties and to prepare them carefully for the formal rush period which lasts two weeks. To be eligible for rush a coed must have an All-University "C" average the previous term and be registered for 12 credit hours. Formal pledging takes place at the end of the rush period.

More information on sororities is available by writing the Sorority Advisor, Student Activities Division, Office of Student Affairs.

STUDENT ORGANIZATIONS

Membership in a student organization is encouraged because of the opportunities it offers for exploring individual interests with other students, complementing academic pursuits and classroom experiences, assuming responsibility and leadership positions, and participating in decision making and group efforts.

Joining an organization affiliated with your academic college provides an opportunity for meeting faculty members and other students in your major area of study. Honorary organizations recognize students who have attained outstanding scholarship and demonstrated leadership ability and high personal standards.

Recreational activities and team sports are provided through an extensive women's intramural program and a men's intramural program. The Music Department has a variety of musical groups in which qualified students are welcome.

A list of organizations chartered by All-University Student Government appears on the next page. Those marked with an asterisk (*) invite freshmen to membership. Further information about these organizations may be obtained from the Student Activities Division, Office of Student Affairs, and when you arrive on campus your residence hall will have a *Directory of Student Organizations* which describes the activities, programs, and membership requirements of each organization. Names of students and advisors to contact for information regarding a specific group will also be available in this Directory.

Student Services Building where all AUSG offices are located.



GENERAL - SOCIAL AND SERVICE ORGANIZATIONS

- *Accounting and Finance Club
- *Acrobat's Club
- *Agricultural Economics Club
- *Agricultural Education Club
- Agriculture Council
- *Agronomy Club
- *Alpha Phi Omega (National Scouting Fraternity)
- Angel Flight
- *Arab Club
- Army ROTC Officers' Club
- *Association of African Students
- *Basic Action Party
- *Block and Bridle
- Business and Public Service Council
- *Campus 4-H Club
- *Campus United Nations
- *Carribean Club
- *Child Development Club
- *Chinese Student Club
- *Conservative Club
- *Dairy Club
- Delta Sigma Pi (Business)
- Education Council
- Engineering Council
- *Engineers' Wives
- *Fisheries and Wildlife Conservation Club
- *Floriculture Forum
- *Foods and Nutrition and Institutional Administration Club
- *Folklore Society of MSU
- *Forensic Union
- *Forestry Club
- *French Club
- *Freshman Home Economics Club
- *Geology Wives
- *German Club
- *Health, Physical Education and Recreation Club
- *History Club
- Home Economics Council
- *Home Economics Teaching Majors Club
- *Humanist Society
- *Indian Students Association
- *Industrial Arts Association
- *Industrial Designers Institute
- *International Relations Club
- *International Club
- *Iranian Student Club
- *Jazz Society of West Circle Drive
- *Judo Club
- *Korean Club
- LaCrosse Club
- Les Gormets
- *Management Club
- *Marketing Club
- Men's Association of Medical Technology
- *MSU Amateur Radio Club
- *MSU Hospital Association
- *MSU Players
- *Music Educator's National Conference
- *National Association for Advancement of Colored People
- *Nursery and Landscape Management Forum
- *Outing Club
- *Packaging Society
- *Packaging Wives' Club
- *Pakistan Student Association
- *Park Management
- *Pershing Rifles
- *Phi Beta Lambda (Business Education and Secretarial Administration)
- *Philippine Club
- *Pomoler Club
- Porpoise Club (Men's Swimming)
- *Poultry Science Club
- *Pre-Med Club
- *Pre-Vet Club
- *Promenaders
- Psi Chi (Psychology)
- *Related Arts Club - Institute of Interior Design
- *Retailing Club
- *Rifle Club
- *Russian Club
- *Sailing Club
- Scabbard and Blade
- *Ski Club
- *Social Work Club
- *Spanish Club
- *Spartan Badminton Club
- *Spartan Pistol Club
- *Spartan Wives' Club
- *Spartan Women's League
- *Student Association of Landscape Architects
- *Student National Education Association
- *Student Non-violent Coordinating Committee
- *Student Society of Urban Planners

- *Students for a Democratic Society
- *Students Off Campus
- *Two by Four Club
- Varsity Club
- *Veterans' Association
- *Veterans' Wives Club
- *Volleyball Club
- *Weightlifting Club
- *Winged Spartans
- *Young Democrats
- *Young Republicans
- *Young Socialists

HONORARY ORGANIZATIONS

- Alpha Delta SigmaAdvertising
- Alpha Delta Theta
Medical Technology
- Alpha Kappa DeltaSociology
- *Alpha Lambda Delta
All-University Freshmen
Women
- Alphi Phi Sigma
Police Administration
- Alpha ZetaAgriculture
- Arnold Air SocietyAFROTC
- Beta Alpha PsiAccounting
- Beta Alpha Sigma
Landscape Architecture
- Beta Beta BetaZoology
- Beta Gamma SigmaCommerce
- Blue Key
All-University Junior and
Senior Men
- Chi EpsilonCivil Engineering
- Circle Honorary
Women's Residence Halls
- Delta OmicronMusic
- Delta Phi Epsilon
Foreign Service
- Delta Psi Kappa
Women's Physical Education
- Delta Sigma RhoForensics
- Eta Kappa Nu
Electrical Engineering
- Excalibur
All-University Senior Men
- Green Helmet
All-University Sophomore Men
- *Green SplashWomen's Swimming
- Kappa Delta PiEducation
- Kappa Tau AlphaJournalism
- Knight's of St. Patrick
Engineering

- Mortar Board
All-University Senior Women
- Omicron Delta Kappa
All-University Junior and
Senior Men
- Omicron NuHome Economics
- *OrchesisDance
- Phi Alpha ThetaHistory
- Phi Epsilon Kappa
Men's Physical Education
- *Phi Eta Sigma
All-University Freshmen Men
- Phi Kappa Phi
All-University Seniors
- Phi Lambda TauEngineering
- *Phi Mu AlphaMusic
- Pi Alpha XiFloriculture
- Pi Kappa GammaPackaging
- Pi Mu EpsilonMathematics
- Pi Omega PiBusiness Education
- Pi Sigma AlphaPolitical Science
- Pi Tau Sigma
Mechanical Engineering
- Sigma Alpha EtaSpeech
- Sigma Delta PiSpanish
- Sigma Gamma EpsilonGeology
- Sigma Lambda Chi
Building Construction
- Sigma Pi Eta
Hotel Administration
- Sigma Pi SigmaPhysics
- Tau Beta PiEngineering
- Tau Sigma
Arts & Letters, Business,
Natural Science, Social
Science
- Theta Alpha PhiDramatics
- Tower Guard
All-University Sophomore
Women
- Xi Sigma PiForestry

PROFESSIONAL FRATERNITIES AND SOCIETIES

- *Alpha Kappa Psi (Business)
- American Foundryman's Society
- *American Institute of Chemical
Engineers
- *American Institute of Electric &
Electronic Engineers
- *American Society of Agricultural
Engineers
- *American Society of Civil Engineers

*American Society of Mechanical Engineers

American Society for Metals
American Veterinary Medical Association

Phi Delta Kappa (Education)

Phi Gamma Nu (Women's Business and Economics)

*Pi Sigma Epsilon (Food Distribution)

*National Association of Home Builders

*National Association of Musical Therapy

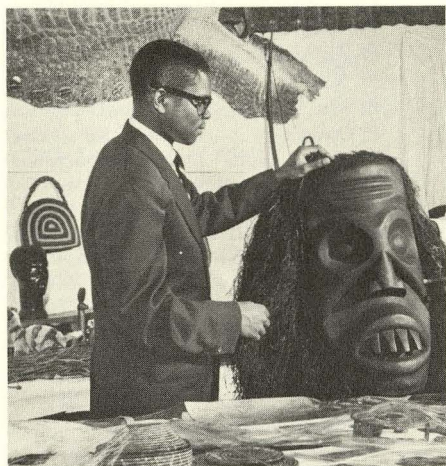
*Sigma Alpha Eta (Speech and Hearing Science)

Sigma Delta Chi (Journalism)

*Sigma Phi Delta (Engineering)

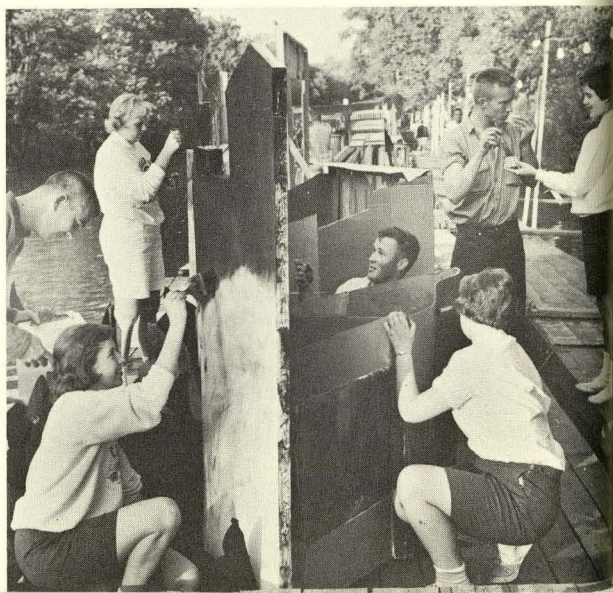
*Society of Automotive Engineers

Theta Sigma Phi (Women's Journalism)



The International Festival gives foreign students an opportunity to share their culture with M.S.U. friends.

Water Carnival is a senior tradition in which everyone can participate.





Informal jazz session.



Intramural sports.



Alumni Chapel windows proclaim Religion, Brotherhood and Patriotism.

PART FIVE

Religious Life

MICHIGAN STATE UNIVERSITY recognizes that religious values have a vital place in your present and future life.

While no two of you will probably embark on exactly the same program of courses at Michigan State, all of you will share one common objective—the attainment of a sound philosophy of life.

All aspects of your experience at M.S.U. will make some contribution to your own pattern of living; the various religious student centers near the campus will seek to relate these aspects to the ultimate reality called God and His will for you in your life.

While at Michigan State you will not be pressed to adopt the creed of any other church than your own. You will find there is respect for the convictions of each individual. There is recognition that there are many approaches to spiritual maturity, and you will be free to develop your own personal insights.

You will find religious student centers in East Lansing devoting their facilities to meeting student needs. These units have staffs of trained ministers, priests, rabbis, and directors of student activities. They provide Michigan State students with the chance for participation in programs of religious worship and the opportunity to meet other students through well-planned social activities. If you are interested in a balanced extracurricular program, you may find participation in a religious group a tremendous asset as you prepare for life after graduation.

American Baptist Student Fellowship—The purpose of this group is to provide Baptist students an opportunity for fellowship and service, and to provide a Baptist witness to the campus. The fellowship supplies a supplement to the ministry of the several Baptist churches in the area, through prayer and Bible study groups, fellowship groups, recreation, discussions, lectures, forums, debates, convocations, conferences and deputation teams. The Baptist Student Center at 336 Oakhill, East Lansing, is the base of operations, serving as residence for the Baptist Chaplain and as a student center. Its doors remain open.

Baptist Student Union—The Baptist Student Union is sponsored by the Baptist State Convention of Michigan, the Student Department of the Sunday School Board of the Southern Baptist Convention, and the local Baptist Churches associated with these conventions. Its mailing address is 1148 Beech Street, East Lansing.

B'nai B'rith Hillel Foundation — The Foundation at 319 Hillcrest Avenue is designed primarily to give Jewish students a deeper and more significant understanding of their religious and cultural heritage. The program includes religious services on Friday evenings, Saturday mornings, and on holidays; Sunday evening suppers and forums; discussion groups, socials, activity groups, Passover Seder, interfaith activities, etc.

Campus Crusade for Christ — An international, interdenominational student Christian organization. The purpose of the group is to encourage students to be intellectually honest in considering the Christian life and the life of Christ. This is done through weekly gatherings called college life and other activities such as group discussions and personal appointments. The Crusade House is located at 541 Abbott Road. Phone 337-2505.

Canterbury Club — Canterbury Club is the officially recognized Episcopal student organization on campus. It meets every Sunday evening in the All Saints Episcopal Church, 800 Abbott Road, and during the week for special activities that relate to any area of the purpose.

Channing Murray Fellowship — The Channing Murray Fellowship is a Unitarian-Universalist student organization affiliated with the International Religious Fellowship and the continental Liberal Religious Youth. Meetings are held Sunday evenings in the Union. Programs consist of discussions, forums on ethical, philosophical and religious subjects, and recreation.

Christian Science Organization — The Christian Science Organization is composed of Michigan State students who indicate a preference for Christian Science when entering the University. Weekly meetings, conducted by students, are held each Tuesday evening during the academic year in the Union Building.

Deseret Club — The Deseret Club is an association of students of the Mormon Faith. Its mailing address is 149 Highland Avenue, East Lansing.

Disciples Student Fellowship — The Disciples Student Fellowship is sponsored by the Michigan Christian Missionary Society and the First Christian Church (Disciples) at Eureka and Holmes Streets, Lansing. The D.S.F. meets every Sunday evening in the Union Building. The Student Center is located at 133 Milford, East Lansing.

Liahona Fellowship — Liahona Fellowship is the officially recognized student organization of the Reorganized Church of Jesus Christ of Latter Day Saints on the campus. Liahona Fellowship meets every Sunday evening and during the week when special meetings are called.

Missouri Synod Martin Luther Chapel — Location of the Chapel and Student Center is at 444 Abbott Road. Gamma Delta, the organization of Lutheran students of the Synodical Conference, meets every Sunday evening for cost supper and fellowship. The chapel is open daily. Morning worship services are held on Sundays. Evening services are held Wednesday and Sunday.

National Lutheran Council — University Lutheran Church — The Lutheran Student Association meets every Sunday evening. The association is open to Lutheran and all other interested students. Student members of the congregation sponsor socials and discussions, sing in the choir, usher, teach, and serve on the Church Council. Holy Communion is celebrated on Wednesdays at 7:00 a.m., followed by breakfast at 7:30. The Student Center-Church is located at Division and Ann Streets (two blocks north of Berkey Hall).

Pan-Orthodox Student Association — The Pan-Orthodox Student Association of Michigan State University was formed in January, 1952, with Orthodox ecclesiastical approbation. Membership is open to all Eastern Orthodox students at M.S.U., regardless of national background. Divine Liturgy is celebrated Sunday at 9:30 a.m. at St. Andrews Parish and the Student Center is located at 1216 Greencrest, where student activities are also held.

Reformed Christian Fellowship — The Reformed Christian Fellowship is organized to further the social and religious life and witness of Reformed students at Michigan State University. Meetings of the Fellowship are arranged to suit the needs and schedules of the members of the organization. Mailing address for information is 238 Marshall Street, Lansing, Michigan.

Spartan Christian Fellowship — Spartan Christian Fellowship is the M.S.U. chapter of the international Inter-Varsity Christian Fellowship. Activities include fall and spring conferences, campus programs, Bible studies, prayer meetings, and various social activities.

St. John Student Parish — St. John Student Parish is the official Catholic organization for students at Michigan State University. Exclusively designed for students, it affords both spiritual, educational and social growth for its members. Activities include a complete parish program: six Sunday Masses, four daily Masses, classes and lectures, dances, picnics, retreats, ski trips, and usually communion breakfasts. The facilities are located at 327 M.A.C. Avenue, where two priests are in residence and available for private conferences.

Trinity Collegiate Fellowship — Trinity Collegiate Fellowship, a Christ-centered, interdenominational student organization, is designed to deepen and strengthen the spiritual life of the M.S.U. student. Weekly meetings are held on Sunday evenings in the Educational Building of Trinity Church. Services are held in East Lansing Trinity Church, 120 Spartan Avenue.

United Campus Christian Fellowship — A united expression of the United Presbyterian, United Church of Christ, Congregational, Disciples and E.U.B. churches that seeks to assist the University in its work of education and scholarship, and to be about the work of reconciliation in the campus community. It seeks to help people find ways of living and working together while being caught up in the day to day life of the University.

United Campus Ministry — An ecumenical awareness of the Church in the life of the University that is composed of those groups that see the mission of the Church as being one that transcends denominational concerns. Those who have committed themselves to life and work together in the framework are: United Presbyterian, USA; United Church of Christ; Congregational; Methodist; Protestant Episcopal; Christian (Disciples); Lutheran (N.L.C.); and E.U.B. Churches.

Wesley Foundation — Wesley Foundation is the Methodist Student Movement at Michigan State University providing opportunity for spiritual, social, and intellectual growth for persons who are seeking to develop a coherent philosophy of life, integrating their academic knowledge with all experience, and doing so within the fellowship of Christ and His Church. To accomplish this, a program of worship, study, discussion, service, and recreation is provided. Wesley Foundation is located at South Harrison and Wilson Roads.



PART SIX

Calendar of Events

EDUCATION comes not alone from the classroom, the laboratory, and books. Living for four years with students having a variety of interests, backgrounds, and points of view is broadening and maturing. Such an experience develops tolerance, independence, and respect for the individual. A student is challenged to think out his own beliefs and values. And friendships made become one of the finest parts of education.

The year ahead promises an exciting beginning for your experience in living at Michigan State. Upon the following pages are noted but a few of the Fall Term's planned events and activities. Many, many more will be announced in your personal copies of the student-edited daily newspaper, the *Michigan State News*.

FALL TERM, 1964

September 26-30	Welcome Week and registration
September 26	8:00 a.m. Residence Halls open for check-in of freshmen who did not attend a Counseling Clinic. 10:30 a.m. Orientation Meeting for freshmen who did not attend a Counseling Clinic. 10:30 a.m. Residence Halls open for check-in of all other new students.
September 27	7:00 p.m. President's Welcome to Freshmen
September 28	8:45 a.m. President's Welcome to Transfer Students 8:00 a.m. Registration Begins
October 1	8:00 a.m. Classes Begin
October 3	Football—Southern California (Band Day)
October 5	London Symphony Orchestra (First artists to appear in the 1964-65 M.S.U. Lecture-Concert Series which brings to the campus a varied array of talent. Presented to M.S.U. students free of charge, its purpose is to widen cultural experiences in the most enjoyable manner. Activity book coupons may be exchanged for tickets.

October 5-6	Career Carnival
October 10	Football—Michigan
October 13-14	Leningrad Kirov Ballet (<i>Lecture-Concert Series</i>)
October 15	Warsaw Philharmonic (<i>Lecture-Concert Series</i>)
October 24	Football—Northwestern (Homecoming)
October 27-31 and November 1	University Theatre
November 2	Royal Irish Brigade (<i>Lecture-Concert Series</i>)
November 7	Football—Purdue (Parents Day)
November 15	Orchestra Concert (Music Department)
November 19	Alexander Brailowsky, Pianist (<i>Lecture-Concert Series</i>)
November 23	New York City Opera Company "Faust" (<i>Lecture-Concert Series</i>)
November 24	New York City Opera Company "Die Fledermaus" (<i>Lecture-Concert Series</i>)
November 26-29	Thanksgiving Recess
December 6	Christmas Concert (Music Department)
December 11	Commencement
December 14-18	Final Examinations



A full house of 76,000 fans jammed into Spartan Stadium.

INDEX

Academic Advisor	6
Academic Responsibilities	38
Arrival on Campus	8
Associated Women Students	41
AUSG	43
Automobiles	40
Budget and Finances	9
Calendar of Events	61
Campus	17
Cars	40
Clothes	16
Community Housing	12
Co-operatives	13
Counseling Center	31
Counseling Clinics	5
Courses, University College	24
Dean of Students, Office of	30
East Lansing	18
Employment, Students	31
Examinations	26
Finances	9
Fraternity Pledging	49
Governing Groups, Major	47
Health Center	34
Health Insurance	36
Honors College	26
Honors Sections	27
Housing Assignments	11
Housing Contract	13
Housing, Married	12
Housing Off-Campus	12
Insurance, Health	36
Kellogg Center	17
Lecture-Concert Series	61
Loans	34
Luggage	17
Mail, Packages, Luggage	17
Majors, Selecting of	28
Map of Campus	32
Married Student Apartments	12



Beaumont Tower

Orientation to M.S.U.	5
Orientation Testing	8
Pre-Registration Conferences	7
Registration	8
Regulations, General	39
Religious Life	57
Residence Halls	11
R.O.T.C.	27
Scholarships	10
Sorority Pledging	50
Student Employment	31
Student Government, AUSG	43
Student Organizations	50
Tests	8
Travel to M.S.U.	15
Union Building	17
University College	24
Veterans and War Orphans	34
Waiver Testing	9
Welcome Week	8
What to Bring to the Campus	17



1964-65