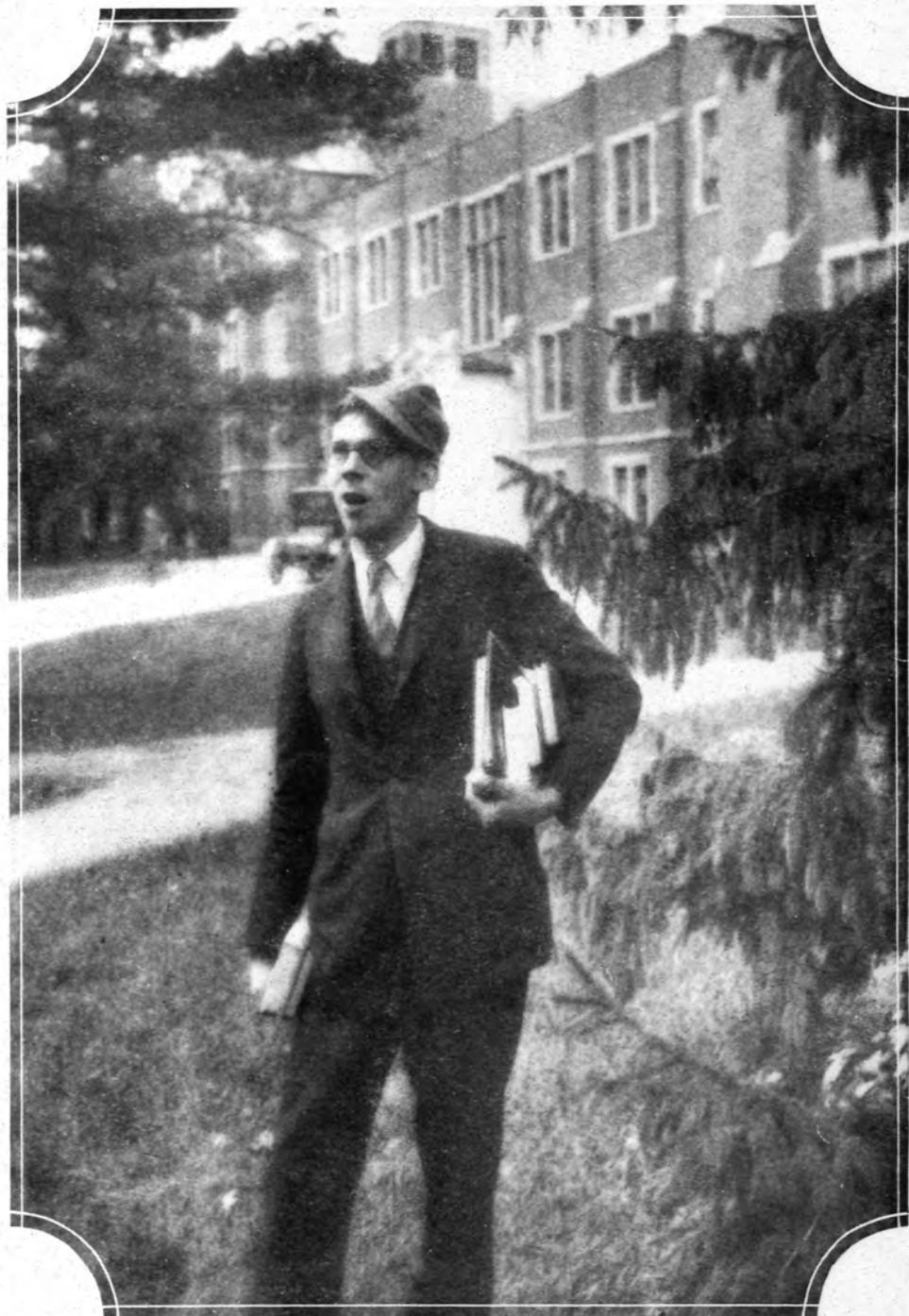


The MICHIGAN STATE COLLEGE RECORD



*And what is college without Freshmen—that bewildering time of baths,
books and Sophomores*

September

1930

To All Our Friends:

Students!

Townspeople!

Faculty Members!

Alumni!

Call us when you want
a table reserved, a
specially prepared meal,
party or bridge reserva-
tions. Phone 2-0738

EAT [Where the Food is Best
Where the Service is Prompt
And the Prices are Right

We extend thanks and appreciation for your
patronage in the past and for the future.

AT THE

UNION

(where the atmosphere of the college town prevails)

At the entrance of the campus

Visitors:
No trip to East Lansing
is complete without at
least one meal at the
Union. Free checking.

Raymond H. Riggs, '26, Manager
Louise I. Clemens, '13, Director of Food Service
Lois Harwood, '26, Assistant Director of Food Service

BIG STATE ROAD SHOW

Demonstration Hall and Grounds

M. S. C. Campus

October 28-29-30, 1930

Michigan State College is co-operating to make the annual State Road Show an exhibition of interest. Every road commissioner, engineer, state, county, city official and contractor will visit this Show.

The aim is to afford an opportunity to inspect the latest in road building machinery assembled in

ONE GREAT DISPLAY

Entertainment features provided.

Leading manufacturers and distributors are planning exhibits.

Arrangements by H. J. McKINLEY, Manager, Secretary Kent County Road Commission,
1500 Scribner Ave., N. W., Grand Rapids

Under Auspices MICHIGAN ASSOCIATION of ROAD COMMISSIONERS and ENGINEERS

Listening In

SIGNIFICANT is the statement credited recently to President Wilbur of Stanford university, now Secretary of the Interior, about the college of today that our alumni may well heed:

"The American college as such is on the wane. The old four-year course has served its term. It is dropping out of the picture. The American university has added to it its professional schools, so that the A. B. degree is something you get as you go by now into business, into engineering, medicine, law, political life, anything that requires, as democracy now requires, a superiority. So the old A. B. degree is going to pass from the picture with its four-year course, its sharp class organizations, and that sort of thing.

"And two things are certain to happen.

"Certain American colleges are becoming universities, and they are the great American universities. Some of the American colleges are becoming junior colleges trying to cover that period and cover it well, wondering just what will be done to mark that period. And a certain number of American colleges will fasten in for the four-year period and do such a good job in some chosen field, in some chosen spot, that they will go on for a considerable period of time."

Is Michigan State among the "certain number"? This is a reasonable and just inquiry for alumni provided they turn the question inward as well as outward. For the educational future of Michigan State rests not alone with the faculty and administration officers. It rests, also, in a very large measure, on those whom she has trained. If these care sufficiently they can insure the future. The primary obligation rests on the educated men and women of Michigan State heritage. They can—and it is a reasonable expectation that they will perpetuate their own.

ONCE AGAIN let us whisper in your ear, "come back for the Homecoming game October 18." For all old varsity men there is no other day of the year when you will meet so many of your old friends. The students will give you a program par excellence! There is the big game with Colgate! There is a stadium with good seats for everyone! There is that Spartan and East Lansing hospitality! There is MICHIGAN STATE!

Mark the date—not so far away—take a vacation over the week-end before winter sets in—enjoy a real fall football game with the team in the pink and everything working right for your entertainment.

The MICHIGAN STATE COLLEGE RECORD

Established 1896

Member of the American Alumni Council

Published for the alumni and former students of the Michigan State College by the M. S. C. Association.

Published monthly throughout the year.

Membership in the M. S. C. Association, including subscription to THE RECORD, \$2.50 per year.

Unless members request a discontinuance before expiration of their memberships, it will be assumed a renewal is desired.

Cheeks, drafts and money orders should be made payable to the M. S. C. Association. Entered as second class matter at the postoffice at East Lansing, Michigan.

GLEN O. STEWART, '17, Editor GLADYS FRANKS, w'27, Alumni Recorder
M. KATHERINE LYNCH, '31, Feature Editor

THE M. S. C. ASSOCIATION

Union Memorial Building

OFFICERS—1930-31

R. Bruce McPherson, '90, President W. O. Hedrick, '91, Vice-President
L. T. Clark, '04, Treasurer Glen O. Stewart, '17, Secretary

EXECUTIVE COMMITTEE

Earl E. Hotchin, '12, East Lansing, term expires 1931; L. O. Gordon, '06, Muskegon, term expires 1932; E. Fred Edwards, '99, Lansing, term expires 1933; Harris E. Thomas, '85, Lansing, ex-officio; E. W. Ranney, '00, Greenville, ex-officio; Frank F. Rogers, '83, Lansing, ex-officio; A. C. MacKinnon, '95, Bay City, ex-officio; Mrs. Turner Broughton, '17, President of Alumnae League

Entered at the East Lansing Postoffice as Second Class Matter

Vol. XXXVI, No. 1

East Lansing, Michigan

September, 1930

In This Issue

	Page
The Association President's Page	5
Many Alumni Groups Planning Fall Meetings—Road Show Enlarged	6
Middle Asia Satisfies Wanderlust of Boehringer, '25—Death Claims Popular Extension Worker	7
Campus and Faculty Prepares for Opening Session—Spartan Clubs	8
Horseless Buggy Wins—Alumni Elect Clark, '04	9
Scholastic Ratings Improved—Mumford, '91, Honored	10
"Close Beside the Winding Cedar"	11
Coach Crowley Rallies Spartan Gridiron Forces	12
Roster of 1930 Football Candidates—Smead Improves—Marriages	13
Alumni Affairs	14

POPULATION of Michigan is officially announced as 4,842,280 by the Bureau of Census. This is an increase of 1,173,868, or 32 per cent, since 1920. Michigan maintains its rank as the fifth most populous state. This state enjoyed the third largest numerical gain between 1920 and 1930 and its percentage gain was third. In numerical gain it was exceeded by only New York and California.

THE CONDITION of E. H. Ryder, dean of the liberal arts division, who underwent a serious operation at Ford hospital in Detroit early this summer, is greatly improved. It is re-

ported that he will be removed to his home on Evergreen avenue this month.

THE Dunbar Forest Experiment Station, in northern Michigan, was used for a 4-H club camp this summer, eighteen boys staying there with their teachers for a week. They studied forestry and surveying under the direction of the forestry department.

COACH JAMES CROWLEY spent his vacation touring the western states, visiting Yellowstone National park and other places of interest. The balance of the summer he spent with Miles Casteel calling on prospective students.

This Magazine is printed by

THE CAMPUS PRESS

(Incorporated)

106 West Grand River Avenue
EAST LANSING, MICHIGAN

*Equipped to Produce
All Kinds of*

PRINTING

PUTTING IN THE FOUNDATION

THOREAU once said: "If you have built castles in the air, your work need not be lost; there is where they should be. Now put the foundations under them."

Foundations must be solid and sound to uphold their towering superstructures in safety. If your castle in the air is lofty, the more secure must be the foundations you build under it.

A savings account is the best underpinning for the air castle of your success. It is sound financially, and bank interest adds to its security.



American State Savings Bank

LANSING

South Lansing
1108 W. St. Joe St.

North Lansing
2033 E. Michigan Ave.

DETROIT-LELAND HOTEL

BAGLEY AT CASS AVENUE
DETROIT

WILLIAM J. CHITTENDEN, Jr.
Manager

Modern accommodations for 1200.
New, larger rooms. 100 sample
rooms. Instant elevator service.
Under Bowman management, direc-
tors of the famous Biltmore Hotels.
Near Interstate Bus Terminals.

*Three Popular Restaurants
Main Dining Room • Fountain Room
and the Famous Coffee Shop*



WILLIAM J. CHITTENDEN, Jr.



THE ASSOCIATION PRESIDENT'S PAGE



MICHIGAN STATE has started to record new activities on the pages of her history. It is my happy privilege as president of the Alumni Association to welcome the class of 1930 to our ranks and to extend to all grads the best wishes of our executive committee.

THE M. S. C. ASSOCIATION is organized specifically to advance the interests of State college. It wishes to foster the development of every department and activity of the school. The activities of the Association begin where your student days ended. Its membership is open to every person that ever attended Michigan State one term.

I AM WONDERING if we should feel encouraged by the present status of our Alumni Fund when less than 20% of our alumni body handle the burden of finance? It is my firm belief that we must first build up a large sustaining active membership and then develop projects that will create interest and thus perpetuate such membership. Our executive committee expresses its confidence in an increased alumni consciousness.

R. Bruce McKerson

Many Alumni Groups Planning Fall Meetings

President Shaw and Faculty Members Will Attend

ALUMNI activity starts in full force with the football season each fall and many reunion dinners are now a regular part of the teachers' institute in nine districts of the state.

The following meetings have been planned by the alumni secretary for the various districts holding institutes:

District one, Detroit. No meeting as Detroit club has other plans for later meetings.

District two, Flint. Alumni reunion dinner Monday evening, October 27, 6:00 p. m., Masonic temple. Registration headquarters, Durant hotel.

District three, Lansing. Alumni luncheon, Monday noon, 12 o'clock, Central Temple House. Registration headquarters, Olds hotel.

District four, Grand Rapids. Alumni reunion dinner, Thursday evening, October 23, 6:00 p. m., Masonic temple. Registration headquarters, Pantlind hotel.

District five, Manistee. Alumni banquet, Thursday evening, October 2, 6:00 p. m., Episcopal church. Registration headquarters, Chippewa hotel.

District six, Alpena. No alumni reunion scheduled.

District seven, Marquette. Alumni banquet Friday evening, October 3, 6:00 p. m., Northland hotel. Registration headquarters same.

District eight, Battle Creek. Alumni banquet Thursday evening, October 30, 6:00 p. m., Presbyterian church, Maple street. Registration headquarters Post Tavern.

District nine, Detroit. Alumni luncheon Thursday noon, October 30, 12 o'clock, ballroom floor, Room 228, Statler hotel. Registration headquarters same.

Detroit Club Active

The men of the Detroit club will join with the University of Michigan alumni club in Detroit in the third annual football rally Friday noon, October 3, at the Book-Cadillac hotel. This luncheon has become a traditional event each year prior to the Ann Arbor tilt. Committees from each club promise an interesting program, with Coach Jimmy Crowley speaking for State and Coach Harry Kipke speaking for the University. Ed. Krehl, '08, president of the Detroit M. S. C. club, invites all alumni to the weekly Wednesday noon luncheon at the main dining room of the Masonic temple. Eat at 12:15, and bowling follows.

Grand Rapids Reorganizes

The new officers of the Grand Rapids club with T. A. Steel, '21, president, and Ray L. Baxter, '19, as secretary-treasurer, announce weekly meetings at the Elks Temple cafeteria each Monday noon, at 12:15 o'clock. The officers of the club met early this month and have a new mailing list compiled for the Grand Rapids area. They have secured President Shaw to speak at their district meeting on October 23.

Saginaw Has New Idea

A general letter has been sent to members of the Saginaw club announcing that plans are being made for the club to attend the M. S. C.-North Dakota State football game at the College on November 8, securing seats in a large block and following the game have dinner at the Union before returning home. Reservations should be sent at once to William Winston, 332 Howard street, Saginaw. Seats are \$2.00 each and check must accompany order.

Washington to Entertain

For the first time in the history of the Washington, D. C. club an opportunity will be given on October 31 to see a Spartan football team play within their city gates. President C. G. Woodbury, '04, of the Washington club has appointed committees to work out the details of a smoker and buffet luncheon to be held at one of the leading hotels just after the game. It is planned to have the large military band play a few selections on this occasion. Final details of the meeting will be printed in the October RECORD.



PRESIDENT R. S. SHAW

Will speak at the Grand Rapids meeting October 23

Road Show Enlarged

THE ANNUAL ROAD SHOW of the Michigan Association of Road Commissioners and Engineers will be held in Demonstration hall, October 28, 29 and 30 according to Lee J. Rothgery, '21, of the engineering experiment station.

The exhibit of road machinery, equipment and supplies, which last year attracted 3,500 persons to East Lansing, is expected to draw an attendance of 5,000 this year, Mr. Rothgery reports.

The road show is held each year with the cooperation of the College and the exhibition assists the engineering students in learning the latest details of modern road building equipment.

Twice as much space in the show has already been applied for as there was during the corresponding period in 1929. The Union building will be used as general headquarters by H. J. McKinley, secretary of the Kent county road commission and J. W. Hannen, editor of Michigan Roads and Airports, who have charge of general arrangements.

Stanley DePree, a student of Louis Graveure in the music department, was awarded first place in the Atwater Kent radio audition in Grand Rapids recently. Mr. DePree won the contest over 18 other contestants. The young artist is well known on the Campus and in Lansing and will be remembered as the man playing the leading role in the Union opera last year.



DR. E. L. AUSTIN
Professor of Education

Will speak at the alumni banquet at Marquette, Friday evening, Oct. 3

Middle Asia Satisfies Wanderlust Desires of Carl H. Boehringer

"SINGAPORE, City of the Lion, is a contrasting city of bristling English efficiency and slow-moving milk-white bullocks," writes Carl H. Boehringer, '25, who has spent the past seven months in that city in the capacity of an assistant trade commissioner of the United States Department of Commerce.

"Singapore is a synonym for contrast, which is at times facetious, glorious, tragic, but prosaic—never. It is axiomatic to say that Singapore lies at the cross-roads of the world. Its crowded harbor and open roadstead have ocean liners, freighters, tramp steamers, junks, sampans, modern motor boats and sailing yachts of every description. Its streets are thronged with peoples of every race under the sun. One of the charms of Singapore is the fact that at any turn of the road one might see a smart negro from Zanzibar, a gaunt Arab from Aden, a wealthy Parsee from Bombay, or—a beautiful American girl just off one of the tourist ships.

"Singapore is China, India, Malaya, and Europe thrown together. Singa-

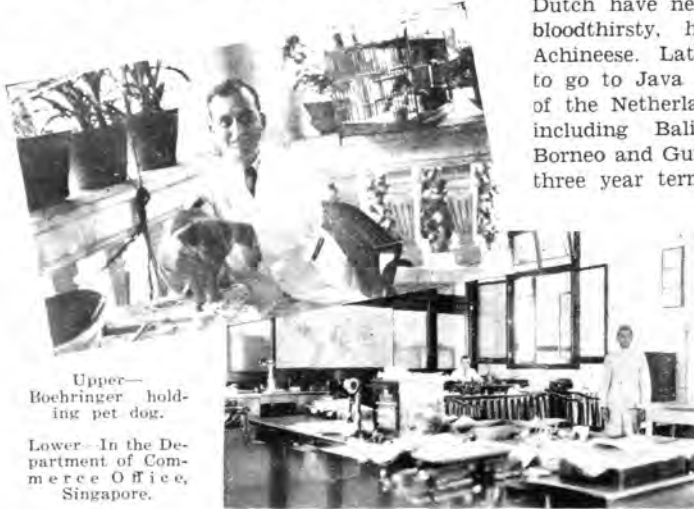
pore is the heart of Middle Asia, one of the most interesting areas on the globe. Here are Indo China, Siam, British Malaya which includes the Straits Settlements, the Federated and Unfederated Malay States, and the Netherlands East Indies, all connected by trade with Singapore. From Middle Asia come rubber, tin, copra, spices and a long list of valuable products in abundance in this tropical paradise."

Recall Vagabond Trip

Middle Asia satisfies Boehringer's wanderlust which was not killed by his vagabond trip around the world with Robert H. Powers, '26, three years ago. Incidentally, he reports that Powers threatens to hit the trail again soon on another globe-girdling tour—but this time accompanied by Gwin Goodwin Powers, '26. Evidently the virus of the open road is still alive in Powers even though it has to compete with the writing of "hot" copy for advertisements.

In September, Boehringer will visit most of the important cities of Malaya and will also go to Sumatra, where the Dutch have never pacified the bloodthirsty, head-hunting Achinese. Later on he expects to go to Java and other parts of the Netherlands East Indies including Bali, the Celebes, Borneo and Guinea. Before his three year term is finished he

will also have seen most parts of Siam and Indo China, and Record readers will be watching for his "second installment."



Upper—Boehringer holding pet dog.

Lower—In the Department of Commerce Office, Singapore.

church, and also was a member of two honorary national organizations, Phi Kappa Phi and Omicron Nu.

She is survived by one daughter, Dorothy, '30, who had made her home with her; one sister, Mrs. Katherine Merrill of Great Falls, Mont., and a brother, Harry H. Hathaway of Fargo, N. D. Funeral services were held from the Peoples church and the body was sent to Fargo for burial.



MRS. LOUISE H. CAMPBELL

MRS. CAMPBELL, state home demonstration leader of home economics of the extension division, was an outstanding leader in her profession prior to her death on August 30.

She was possessed of those rare combinations of cheer, counsel, wisdom and motherhood which always found her personality penetrating her audience and her many acquaintances.

Recently, the well-known night watchman of the Union Memorial building was showing some young guests through the building. Nothing from the guest rooms and faculty club on the third floor, down through the great ballroom, dining rooms and lounges excited any particular comment from the youngsters until they laid eyes on the dish-washing machine in the kitchen. They could see some real virtue in a machine that makes such short work of a tiresome task.

When—what—where was the first picture of our College or of any part of it published? Send in your entry—let's start a little contest.

All varsity men out for Homecoming!

Death Claims Popular Extension Worker

MRS. LOUISE H. CAMPBELL, 56, state leader of home economics extension activities at the College for the past 10 years, died Saturday, August 30, at Edward W. Sparrow hospital in Lansing following a year's illness.

Born at Beaver Dam, Wis., Mrs. Campbell came to East Lansing in 1920 to assume her duties at the College. She had previously held a similar position at the North Dakota Agricultural college, from which institution she was graduated in 1911.

In addition to her work in the home economics department she was active in a number of other organizations and during 1923 served as dean of women at the College.

Among the important posts she filled were the state chairmanship of the better homes committee, appointed by President Coolidge, vice presidency of the state parent-teacher association, and membership on the state public health commission.

Survived by Daughter

She was a member of the Peoples

Campus and Faculty Prepared for Opening Session

Important Staff Changes and Policies Announced

FACULTY and campus are rapidly getting into shape for the opening of Michigan State's seventy-fourth session on Monday, September 29, following the usual three days of orientation for the Freshmen and general registration on the previous Saturday.

Some forty additions have been made to the College staff in filling vacancies created by resignation or in providing for needed expansion, while extensive improvements have been made or are under way on the Campus.

The most important addition to the physical asset is, of course, the new group of barns south of the river, which will allow the unsightly farm structures surrounding Kedzie chemical laboratory to be removed this fall. Contractors have also started the new dormitory for women, just west of Arboretum, while the new animal pathology laboratory just east of the veterinary building, is well under way.

The Campus as a whole is perhaps in better condition than at any recent time. Many of the walks have been repaired, trees have been pruned, shrubbery planted and the roadways improved. The continued summer drought has had its effect on the usual fine grass. The interiors of many offices have been repainted while all the dormitories and college residences have been reconditioned.

Food Service Changed

Of special interest to many alumni is the announcement that the home economics department will have entire supervision of all food service and boarding clubs on the campus. The major change made in this connection is the granting of Miss Louise I. Clemens, '13, a leave of absence from her classroom work to become director of food service for the Union Memorial building. She will be assisted by Lois Harwood, '26, who will be directly in charge of the dining room and group banquets.

New R. O. T. C. Commandant

Foremost among the new additions of the faculty is Lieut. Col. Dorsey R. Rodney, who will assume the position of commandant of the R. O. T. C. unit, succeeding Colonel Edward C. Davis, who has been detailed to the 65th cavalry division at Chicago. Lieut. Col. Rodney was born at New Castle, Delaware 50 years ago. He was appointed to the United States military academy where he graduated in 1903. Since that time he has served various cavalry units in the United States, Mexico, Philippine Islands and saw service in the World War. He comes here from the 4th cavalry unit at Fort Meade, South Dakota.

Additions to the R. O. T. C. staff associated with Lieut. Col. Rodney will be Captain James A. Kilian, a cavalry officer who succeeds Captain Ross Larson, and a graduate of the University of Missouri, and 1st Lieut. Russell E. Bates, a graduate of West Point, and a recent graduate of the Coast Artillery school at Fort Monroe, Virginia.



LOUISE I. CLEMENS, '13

Miss Edva V. Smith has been advanced as acting head of the home economics extension division, succeeding Mrs. Louise Campbell, deceased. Miss Oena Stantz, of Purdue, succeeds Miss Smith as extension specialist in home management.

Dr. C. E. Millar has been advanced as head of the soils department, succeeding Dr. M. M. McCool, resigned.

Miss Lydia Lightring succeeds Miss Helen Grimes as associate professor and acting head of the department of physical education for women. Additions to this department will include Miss Hazel Jones, instructor in physical education, and Miss Josephine Garvin, instructor in swimming.

Samuel H. Dwight, '17, who received his master's degree here in June, has been made an instructor in the physics department, and Russell Davis, '28, becomes an instructor in the chemistry department.

Miss Irma Gross, who has been on leave of absence at the University of Chicago, returns this fall as associate professor in the home economics department.

SPARTAN CLUBS

ANN ARBOR CLUB

HAVING delayed our material until too late for the August issue we want to catch the September number with a notice that the Ann Arbor bunch held their annual mid-summer frolic on the evening of July 30, at the Woman's League building.

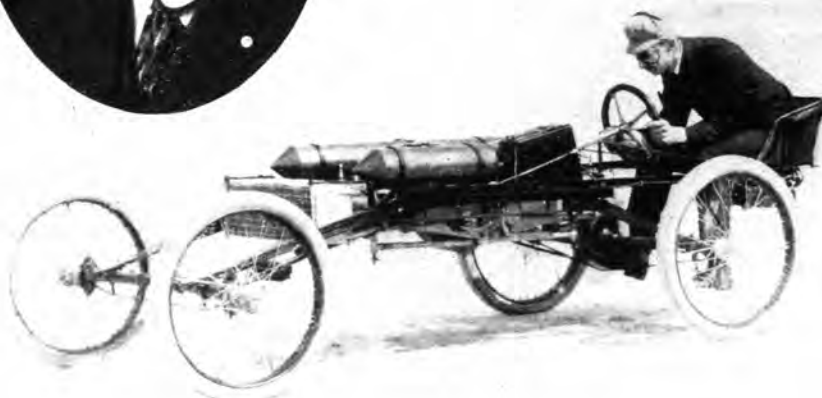
Over 30 State people attending the University summer session were present to greet Professor Lloyd Emmons of the mathematics department, who spoke briefly on the physical changes of the College plant, the new courses of study and of the changes in the faculty personnel.

Discussing the developments of the institution in recent years Professor Emmons pointed to the building of the new library, the establishment of the School of Music, the new home economics building, the development of the liberal arts division, the gift of the Union Memorial building and the beautiful Beaumont Memorial tower as indicative of a larger cultural center being developed at East Lansing. He brought the sentiments of President Shaw just a little closer to the people attending when he mentioned that the president's chief concern was the welfare of the student, physically, morally, spiritually and intellectually.

Among those attending the dinner were the following:

James A. Murray, '25, Norway; O. B. Pederson, '29, Mendon; A. L. Knoblauch, '29, Buchanan; Arthur J. Runner, '13, Ann Arbor; A. J. Hutchins, '09, Grand Blanc; M. E. Hath, '19, New Hudson; Mrs. M. E. Hath; H. E. Nesman, '24, Walled Lake; W. A. Gingrich, '22, Ann Arbor; W. R. McLean, '27, Ann Arbor; A. W. Webber, '24, Amasa; O. W. Stephenson, '08, Ann Arbor; V. I. Whittemore, '22, Ypsilanti; Lloyd C. Emmons, East Lansing; Hugo T. Swanson, '23, East Tawas; Robert H. Gorsline, '20, Hanover; W. E. Baker, '25, Mesick; A. N. Nesman, '20, Unionville; O. W. Laidlaw, '17, Tecumseh; R. E. Trippensee, '20, Saginaw; A. F. Speltz, '19, Pontiac, Illinois; Fred Adolph, '22, Algonac; W. E. Tichenor, '25, Clare; Sallie Gingrich, '24, Ann Arbor; Dorothy Maxson Henshaw, '25, East Lansing; Fred W. Henshaw, '23, East Lansing; Richard C. D. Bell, '32, Wallace C. Swank, '21, Eaton Rapids; R. A. Hickok, '25, Centerville; G. E. Culver, '21, Thompsonville; W. Buchanan, guest. Victor Whittemore, '22, president officer.

Horseless Buggy Wins



HOW would you like to set out to break the world's automotive speed record, over the course at Daytona Beach, mounted on the horseless buggy herewith illustrated?

Not very well, probably. In the first place, you'd have to bend at an uncomfortable angle to reach the low steering wheel. And few present-day drivers would know what to do with the stirrups which held the feet of the driver of this contraption.

However, it's the car which held the world's record in 1903—a speedy racing model by Reo, with the engine exposed and the driver likewise, for there was no wind protection. Horace Thomas, '01, engineer for the Reo corporation, was the daredevil driver of this speed king, dubbed the "Pirate," in those

days, and he it was who took it down the course at Daytona Beach to make the measured mile in 42 seconds, and establish a world's record. Eighty-six miles an hour was fast traveling, mounted on a car as light as this one!

The Pirate was a queer machine consisting of four light pneumatic racing sulky wheels supporting a frame of spider lightness. On this was mounted a four cylinder engine and two rocket-like gas tanks, a radiator and other necessary parts. Young Thomas perched at the rear, his feet in stirrups hung from the rear axle and his hands on the low steering wheel; and thus mounted he bettered the world's record, previously established that same year by Alexander Winton, by fourteen miles per hour.

the medical research and biological laboratories.

In May 1929, upon the retirement of Dr. E. M. Houghton, he was appointed managing director of research and biological laboratories, which position he now holds. The research laboratories consist of 22 complete sections, with research in bacteriology, chemistry, mycology, pharmacology, physiology, veterinary pathology, parasitology and allied subjects. The biological laboratories consist of the Detroit laboratories and Parke-dale farm, Rochester, Michigan, maintained for the production and testing of biological products used in the practice of human and veterinary medicine.

Enjoys Outdoors Life

Furthermore, this busy business man has a hobby. During his leisure hours he derives the greatest pleasure at his wooded farm south of Howell, Michigan, enjoys the great outdoors, hunts, fishes, and incidentally is developing a small orchard.

He is a member of the Detroit M. S. C. Alumni club, the Detroit Athletic club, the Detroit Yacht club, and belongs to the following scientific organizations: United States Public Health Association, the Society of American Bacteriologists, the Michigan Academy of Science, the United States Livestock Sanitary Association and the National Tuberculosis Association.

His name?—Oh! yes, Lawrence T. "Stub" Clark, '04.



LAWRENCE T. CLARK, '04
Treasurer M. S. C. Association

Alumni Elect Clark

THE DAPPER GENTLEMAN with the rotund face, shown herewith, is one of the new members of the executive committee of the M. S. C. Association, having been elected treasurer in the June election. This worthy alumnus claims Detroit as his home where he is managing director of the research and biological laboratories of Parke, Davis and company.

Born in 1881 in Livingston county, Michigan, and reared in a good old-fashioned way on a farm, he went through the district school, through high school and finally landed at the then known Michigan Agricultural col-

lege in 1899. Here he specialized in bacteriology during the last year of his course, and exhibited such a grasp of the subject that he decided to follow it up as an occupation. Receiving his degree with the class of 1904, he remained at the College as an instructor in bacteriology for one year.

Makes Advanced Progress

Entering the research department of Parke, Davis and company July 25, 1905 he proved himself possessed of such a combination of scientific and business abilities that in 1910 he was appointed assistant director in charge of the manufacturing division in biology. He remained in this position until 1918 when he was made junior director of

The Record needs more class news. Write more and it will be published.

SCHOLASTIC RATINGS IMPROVED

FOR the thirteenth consecutive year the women students at Michigan State have carried the leading scholastic honors, with the Sigma Kappa's regaining first place over the Alpha Chi Omega group. The scholastic averages printed below with a comparison for the year 1928-29 are compiled by the registrar of the College annually. For a number of years the women's standings have been considerably higher than those credited to the men, and the women's sororities and societies stand at the top of the list by a generous margin.

Resident alumni of the various groups use these records as a basis for the work of a vigilance committee, in some cases proving an excellent means of higher scholarship for the group. It is interesting to note how some fraternities move up and down the scale in a cycle of 10 years or so. Over 50% of the groups are above the all-college average of 2.253, while this year the national fraternity average for men has increased from 2.282 to an all time high of 2.351. The ratings are determined by using an even 2.000 as a "C" average, while 3.000 equals a "B".

Following is a list of the college and society average for 1929-30 with a comparative list for 1928-29:

Society Average 1929-1930		Society Average 1928-1929	
Society	Average	Society	Average
* 1. Sigma Kappa	2.974	* 1. Alpha Chi Omega	2.712
* 2. Alpha Chi Omega	2.683	* 2. Sigma Kappa	2.667
* 3. Ero Alphan	2.622	* 3. Sesame	2.605
* 4. Chi Omega	2.569	* 4. Ulyssian	2.582
* 5. Theta Kappa Nu	2.558	* 5. Chi Omega	2.568
* 6. Kappa Delta	2.518	* 6. Thetian	2.558
* 7. Sesame	2.489	* 7. Delta Alpha	2.549
Non-National organizations (women) average	2.435	Non-National organizations (women) average	2.549
* 8. Kappa Alpha Theta	2.458	* 8. Alpha Phi	2.523
All-Women's Society average	2.525	All-Women's Society average	2.521
National Fraternity (women) average	2.560	National Fraternity (women) average	2.510
9. Alpha Gamma Rho	2.439	* 9. Ero Alphan	2.490
10. Lambda Chi Alpha	2.415	10. Alpha Gamma Rho	2.460
* 11. Delta Alpha	2.377	* 11. Kappa Alpha Theta	2.4215
* 12. Alpha Gamma Delta	2.354	12. Hermian	2.4213
* 13. Alpha Phi	2.341	13. Union Literary	2.406
Non-Society women's average	2.317	Non-Society women's average	2.402
14. Phi Chi Alpha	2.332	14. Lambda Chi Alpha	2.388
All-Society average	2.299	All-Society average	2.340
15. Pi Kappa Phi	2.288	* 15. Alpha Gamma Delta	2.336
16. Sigma Alpha Epsilon	2.286	16. Delphic	2.331
17. Delphic	2.267	17. AcTheon	2.318
18. Phi Kappa Tau	2.264	* 18. Kappa Delta	2.315
* 19. Thetian	2.228	19. Trimoir	2.293
20. Trimoir	2.184	20. Phi Chi Alpha	2.292
All-College average	2.253	All-College average	2.290
National Fraternity (men) average	2.351	National Fraternity (men) average	2.282
All-Men's Society average	2.201	All-Men's Society average	2.261
21. Phylean	2.1789	21. Phi Kappa Tau	2.250
Non-National organization (men) average	2.093	Non-National organizations (men) average	2.250
All-College women's average	2.393	All-College women's average	2.449
22. Eclectic	2.1782	22. Eclectic	2.248
23. Hermian	2.162	23. Pi Kappa Phi	2.227
All-College men's average	2.188	All-College men's average	2.220
24. Olympic	2.080	24. Sigma Alpha Epsilon	2.213
25. Delta Sigma Phi	2.076	25. Phi Delta	2.194
Non-Society men's average	2.179	Non-Society men's average	2.192
26. AcTheon	2.056	26. Eunomian	2.054
27. Hesperian	2.036	27. Delta Sigma Phi	2.049
28. Phi Delta	1.995	28. Phylean	2.039
29. Eunomian	1.891	29. Olympic	1.999
30. Union Literary	1.817	30. Hesperian	1.937

*Women. A equals 4; B equals 3; C equals 2; D equals 1; X equals (-1); F equals (-2).

Mumford, '91, Honored

MEXICO, "cradle of wars," has set out to restore an industry which in the more troubled times of 20 years ago proved its undoing, and it has summoned Herbert W. Mumford, a Michigan State graduate with the class of 1891, and a nationally known authority, to help do the job.

Mr. Mumford, now dean of agriculture at the University of Illinois, was recently appointed with two other American agricultural authorities to serve on a commission which will study the livestock, educational and other phases of the republic's farming industry and make recommendations for their development.

Back in 1911 money accumulated by the Madero family of Chimalua from

stock raising supplied the sinews of war for the overthrow of the Diaz government. That benevolent dictator, who ruled between 1876 and 1910, is credited with having done more for the progress of Mexico, one of the world's richest treasure lands, than had been achieved by the republic in all the centuries of its previous history.

Now, stock raising in the rich republic is not as prosperous as it once was. Mexican officials realize, however, that the industry can be made just as patent a force for building up good government as it was for tearing it down 20 years ago. Through the help of one of M. S. C.'s famous Mumford brothers and the two other members of the commission, Mexico hopes to bolster its livestock raising business and build up its agricultural education system after the pattern of agriculture

offered by the colleges in the United States.

Has Served Before

In naming Herbert W. Mumford as one of their counselors, the Mexican government has selected one of the foremost livestock authorities of the United States. He was one of the first, if not the first, authorities in the country to recognize the importance of marketing studies in experiment station work.



HERBERT W. MUMFORD, '91

He was one of the first to recognize the inadequacy of the results from the usual livestock feeding trials in animal nutrition work. It was he who inaugurated the practice now common with all experiment stations of using carload lots instead of just a few animals in these feeding experiments. Mr. Mumford has served on many committees during the past few years and has carried his investigations into Germany, Argentine, France, Great Britain, Belgium and Holland.

Serving with the Illinois dean on the Mexican commission will be director Fabian Garcia, of the New Mexico Agricultural experiment station, and Dr. John W. Gilmore, an agronomist of the college of agriculture, University of California.

It is the business of the head of a college:—

To see that the faculty are well fed.

To see that the professors earn their salaries.

To see that the practical courses are really practical and that the cultural courses are cultural.

To see that able and ambitious students are not hindered from advancement by lazy and incompetent students—or instructors.

To see that the professor whose talent is teaching and the professor whose talent is research have equal honor and opportunity.—E. E. Slosson.

"Close Beside the Winding Cedar"

The Campus trees have been re-labeled. Neat aluminum labels have replaced the weather-worn zinc labels that were almost thirty years old. The labeling was done by the forestry and botany departments in co-operation with the landscape architect's office. Many of the trees were left unlabeled so that they could be used for examination purposes in the classes in tree identification.

Again, according to Miss Elida Yakeley, registrar, the number of Chips Off the Old Block in the freshman class indicates that Michigan State men and women still have confidence in the sort of educational and social standards maintained at their alma mater. Indications are that the total enrollment for the fall term will nearly equal that of last year.

And now again we see the annual miracle of thousands of otherwise normal men demonstrating the fact that no matter his age nor business responsibility or his summer's mashie achievement, a college man is just a football fan in the fall.

Lansing and East Lansing aerial fans have followed the competition of the national air tour contestants with unusual interest because of the fact that Art Davis, '23, has been among the leaders from the start. Davis is determined to push his trusty Waco to the front before the tour is completed, thereby winning the Edsel Ford trophy for his interesting collection.

The forest nursery at the College has been enlarged a little this summer by the closing of the old Woodbury road. Every available square foot of space in the nursery, however, is now planted with trees, 7,000,000 in all, which leaves no room for soiling crops. Over 1,600,000 trees were shipped from the nursery this year for planting in the state. With the development of tree planting along the roadsides for snow breaks and the increasing interest in forest planting, it is thought that the shipments next year will be well over 2,000,000 trees. The nursery is one of the show places of the Campus.

Alumni headquarters for Homecoming, October 18, will be on the main floor of the Union. Do not fail to stop in and register and see who else is here. Headquarters will be open all day except during the game. The Union will check everything free, except babies.

Groups of boys representing various 4-H clubs fostered by the extension division under A. G. Kettunen, '17, used the College herds for competitive judging in preparation for the contests at the state and county fairs. During the month of August many auto loads of "future farmers" and their local leaders were Campus visitors.



After being closed for repairs and decorations since the close of the summer session the Union Memorial building was opened to the public on September 9. A new floor in the cafeteria and the decoration of the walls make this portion of the building more attractive than ever. All cement floors have been painted throughout the building while extensive repairs and alterations have been made to the kitchen equipment.

Over on Abbot road and Grand River avenue in East Lansing's business section, new and larger electric signs proclaim the growth of the College City, and every night a full-time policeman testifies that the old town has made some advances since the old hose cart occupied a place under Williams hall and later in the power house. Yes, the city even boasts of an up-to-date fire truck and all the equipment.

Step on the starter for Homecoming! The date—Saturday, October 18.

Rain which fell in East Lansing last week brought some relief to pastures and lawns, and also brought a relief from the warm spell which prevailed here during the early part of the month. The rainfall which measured .18 at the weather station was the heaviest since July 12 when .24 inches fell, according to D. A. Seeley, '98, meteorologist.

Officials of Purdue university, including President E. C. Elliot, visited Lansing recently where they conferred with Governor Fred W. Green and M. B. McPherson, of the state tax commission, relative to certain lands in Luce and Chippewa counties given the university by Chase S. Osborn, former governor. Timber on the property approximating 5,000 acres is now being cut off, causing a drop in values. President Elliot sought a reduction in assessed valuation of the university's holdings. While in Lansing President Elliot and his party were guests of President Shaw and Secretary Halladay on the Campus.

As the RECORD goes to press, W. A. Davenport, superintendent of buildings and grounds, has several crews of men putting the finishing touches on dormitories, offices and laboratories, preparatory to the opening of classes on Monday, September 29. The State Highway department, has completed curb and gutter along the Campus roads and the maintenance department is spending much time getting the eight inches of new gravel in its place before the rush of the football season. Superintendent Davenport has been moving "heaven and earth," at least a great amount of earth, to bring the slope of the lawn in front of Ag hall down to the level of the new road bed.

Plans are being made to charter a special train for the trip to Washington for the Georgetown game, October 31. At the present time the band hopes to make the trip with the team and fans. L. L. Frimodig, '17, assistant athletic director, is negotiating for a one-way fare for the round trip, although the route and details are not completed as yet. The special train will leave Lansing Wednesday night, October 29, arriving in Washington on Thursday noon. This will allow the team time to practice under the floodlights at the American league baseball park, where the game will be played on the following night. The train will leave Washington Saturday night, allowing everyone ample time for sight-seeing.

Coach Crowley Rallies Spartan Gridiron Forces

Meiers or Fatchett May Replace Smead at Center

"HIT ME! Hit me hard!" "Watch those arms and dig those toes in on some fast jabber steps."

Words of this nature ring in the ears of hundreds of spectators as Coach Jim Crowley and "Judge" Carberry pass out their battle-cry to the Green and White charges in the pre-season drill days on the Spartan gridiron.

Unusually warm weather during the early part of the camp led the coaches to postpone the more strenuous sessions to the second week. From then until now the daily bill of fare has been pretty stiff despite the weather, hot or cold.

Solving Center Problem

The past week has found Coach Crowley and his assistants on their way toward the solution of the center problem. It begins to look as though two sophomores have jumped ahead in the race for the injured Captain Harold Smead's position. Francis (Buddy) Meiers and Elwyn Fatchett are the favorites with the former conceded the edge by sideline watchers. Meiers' biggest handicap is lack of weight. He reported to camp in fine physical condition but weighing only 175 pounds. Meiers' speed and experience in defensive work may compensate for the lack of poundage. The Muskegon blond has shown a relish for the pivot duties.

Fatchett Has Weight

So far as weight is concerned Fatchett would be the more likely choice.

FRESHMAN FOOTBALL 1930

Oct. 18—Michigan State Normal Freshman at Ypsilanti.

Oct. 24—University of Detroit Freshman at Detroit.

Nov. 8—Grand Rapids Junior College at East Lansing.

The big Blissfield sophomore carries around 185 pounds and has a sturdy physique that makes him loom as a real hope. He has played center all through high school while Meiers has been a backfield man during his previous playing years.

The Spartan line, outside of the guards, will carry more than the average amount of weight this season. Nearly all the candidates for tackle are heavy. Don Ridler and Lester Exo, letter winners on last year's team, go well over 200 pounds while Ralph Brunette, a very likely looking sophomore, weighs just about 200. Cecil Fogg and Harold Haun, a pair of veteran ends, are close to the 190 mark, while Jake Fase, another wing, is not far behind.

Backfield is Fast

The Spartans had a speedy backfield last fall, but the 1930 edition looks even faster. Abie Eliowitz, Detroit sophomore, is admittedly faster than either Schau or Danziger, the occupants of that berth last fall. Eliowitz carries 185 pounds of weight, steps along with the halfbacks and possesses unusual defensive ability. Gerald Breen, Holland speed merchant, is leading the halfback candidates. Monnett,

Nordberg, Warren and Lafayette are all fast.

Roger Grove is generally believed to be the man who will lead the Spartans in their games. While Coach Crowley has not announced his plan for filling Smead's vacancy as captain, it is thought he will appoint a leader for each game. Grove's two years as quarterback apparently fit him for the duties. He is heavier this year, has improved his forward passing immensely during the summer and his punting, always a feature of his play, is up to standard. Sam Schwartzburg, Detroit sophomore, is a likely understudy to Grove.

Touchdown Spirit Prevails

Ask any Spartan athlete how things are going and he will promptly reply "Things look better this year." Not only the athletes themselves, but the hundreds of side-line fans like Crowley's methods of early drill. He gives them plenty of football but at the same time does not believe in getting the boys all tired out before a game. He watches the body exercises with a shrewd eye. He visits the training table at the Union nearly every day and knows that his charges are receiving the proper diet. He has the confidence of the boys, the alumni and Lansing fans.

State has a tough schedule this year and may not win all the games. What the Spartans are out to do is to score touchdowns, not see how long they can hold an opponent. With that spirit, whether in victory or defeat, no one can raise his voice in protest.

FOOTBALL SCHEDULE 1930

Sept. 27—Alma college at East Lansing.

Oct. 4—University of Michigan at Ann Arbor.

Oct. 11—University of Cincinnati at East Lansing.

Oct. 18 — Colgate university at East Lansing.

HOME COMING

Oct. 25—Case School of Applied Science at East Lansing.

Oct. 31 — Georgetown university at Washington, D. C. (Night Game)

Nov. 8—North Dakota State college at East Lansing.

Nov. 22—University of Detroit at East Lansing.

CROSS COUNTRY 1930

Oct. 11—Novice Run at East Lansing.

Oct. 18—All College Run at East Lansing.

Oct. 25 — Butler university at East Lansing.

Nov. 1—University of Michigan at Ann Arbor.

Nov. 8—University of Notre Dame at Notre Dame.

Nov. 15—Fifteenth Annual State Intercollegiate Run at East Lansing.

Nov. 17—Twenty-second Annual I. C. A. A. A. Run at New York City.

Nov. 22—Fifth Annual Central Intercollegiate (place of run undecided).

Nov. 22—All-Fresh Run at East Lansing.



J. H. CROWLEY
Coach



IN AN EFFORT to save the double row of elms through the city of East Lansing, Phelps Vogel-sang, '25, forester of the State Highway department, has inaugurated a plan to install 10-inch tile in the three boulevard blocks running through the business district. The state has asked the city of East Lansing to provide the water for filling the tile each week during the summer months.

The tile will be placed about five feet underground, the installation being done so no roots of the elm trees will be disturbed. The row of elms were planted in the fall of 1878 and the spring of 1879, and Dr. Beal in his history of the College mentioned the "roadside elms" many times.

MARRIAGES

BUCHANAN-LAIRD

J. R. Buchanan, '27, and Isabel Laird, '28, were married at the Peoples church in East Lansing, August 9, 1930. They are residing at 602 W. Rankin street, Flint.

GREENMAN-THOMAS

Roy Greenman, '30, and Eva Thomas were married in East Lansing July 26, 1930. At present they are located at Devils Lake, Michigan, where Greenman is employed by the State Highway department.

HERSEE-COLLINS

G. Burton Hersee and Dorothy Jean Collins, '26, were married July 30, 1930, in Lansing. They will make their home in Milwaukee.

STEPHENS-TERRY

Harper A. Stephens and Ellen Terry, both '32, were married June 23, 1930, in Lansing. They are both students at the College.

RAWDEN-FISK

Cecil Rawden, '26, and Virginia Fiske were married August 2, 1930, in Lansing. They will reside in Flint where Rawden is a member of the firm of Flint Tree and Landscape Gardening company.

EDWARDS-MACKLIN

Harold W. Edwards, '26, and Edith Macklin were married in the Peoples church, East Lansing, August 2, 1930. They are living in Lansing.

On Sunday afternoon, September 27, the Elks and State Journal baseball teams will play a benefit game at the Lansing city ball park for Captain Harold Smead. Alumni and Spartan fans are urged to attend.

Word has been received that Howard Minier, '30, captain of the varsity golf team here last spring, has added another title to his list. He won the

Battle Creek city championship from a strong field recently. Earlier in the year Minier won the western Michigan amateur championship and gained entrance to the Michigan Golf association tournament at Charlevoix although he lost out in the second round of play.

Smead Gaining Slowly

REPORTS reached Coach Crowley this week that Captain Harold Smead was out of danger, following the amputation of his leg. Smead, resting in Faulkner hospital, Jamaica Plains, Boston, received a large floral tribute from his teammates at the close of the first practice session Sept. 10.

He has been able to sit up in a wheel chair a few minutes each day and if recovery is very rapid may be brought to Michigan in time to witness the Ann Arbor game.

WE HAVE WITH US IN FOOTBALL—

Name	Position	Wt.	Height	Age	Exp.	Home
†Byers, Paul W.	Center	210	6' 2"	18	0	East Lansing
Cook, Richard W.	Center	165	6' 0"	24	1	Muskegon
†Fatchett, Elwin R.	Center	180	6' 1"	18	0	Blissfield
Handy, George B.	Center	183	5' 11"	20	1	Detroit
*Kantiz, Hugo B.	Center	190	5' 11"	25	2	Muskegon
Maskrey, Gerald	Center	182	6' 0"	25	1	Detroit
†Meiers, Francis H.	Center	172	5' 11"	21	0	Muskegon
†Pashnick, Anthony	Center	176	5' 11"	22	0	Hamtramck
†Bowen, Edgar D.	Guard	185	5' 9"	21	0	Sturgis
Buskirk, Robert F.	Guard	175	5' 10"	20	1	Paw Paw
Carlson, Clifford A.	Guard	170	6' 0"	21	0	Negaunee
Carlson, George S.	Guard	187	5' 10"	20	1	Iron River
†Collins, Merle L.	Guard	176	5' 8"	19	0	Headrick, Okla.
*Dill, Reuben E.	Guard	197	5' 9"	25	2	Saginaw
Fisk, Donald A.	Guard	156	5' 10"	19	0	Highland Park
*Gross, Milton C.	Guard	167	5' 8"	22	1	Saline
Jaehrig, Howard T.	Guard	178	5' 10"	22	1	Grand Rapids
Lincoln, Robert S.	Guard	182	5' 10"	23	1	Greenville
Mix, Ray E.	Guard	180	5' 10"	20	0	Birmingham
Miller, Robert W.	Guard	160	5' 9"	22	1	Waukegon, Ill.
Noble, Frank S.	Guard	170	5' 11"	22	0	East Lansing
*Streb, Claude R.	Guard	187	5' 10"	21	2	Birmingham
Utter, Lloyd D.	Guard	160	5' 10"	20	0	East Lansing
†Brunette, Ralph H.	Tackle	195	5' 10"	22	0	Green Bay, Wis.
*Exo, Lester W.	Tackle	224	5' 11"	23	1	Holland
Hosler, Maynard D.	Tackle	192	6' 0"	26	0	East Lansing
Kench, Charles E.	Tackle	187	6' 2"	19	0	Ionia
List, Herbert C.	Tackle	185	6' 1"	22	2	Sebewaing
†McDowall, Clarence L.	Tackle	192	6' 2"	29	0	Royal Oak
*Ridler, Don G.	Tackle	210	6' 0"	23	2	Detroit
Schuer, Ammon E.	Tackle	184	6' 0"	20	0	Gaylord
Schrems, Albertus H.	Tackle	210	6' 1"	21	1	Saginaw
†Skornia, Harry J.	Tackle	185	6' 0"	20	0	Boyer City
†Sweeney, Charles F.	Tackle	195	6' 3"	20	0	Hillsdale
Warner, Roy C.	Tackle	232	5' 11"	21	1	Detroit
†Ardziejewski, Alphonse	End	172	6' 0"	23	0	Hamtramck
†Bernhagen, Ralph V.	End	170	6' 0"	20	0	Toledo, Ohio
Boynton, Hubert E.	End	155	5' 10"	20	0	Byran, Ohio
*Fase, Jacob P.	End	183	6' 0"	24	1	Grand Haven
*Fogz, Cecil C.	End	188	6' 1"	24	2	Jackson
†Gotta, Charles E.	End	185	6' 0"	19	0	Bessemer
Hager, Oscar F.	End	175	5' 11"	19	0	Saginaw
Handler, Louis H.	End	185	6' 0"	22	1	Detroit
*Haun, Harold E.	End	184	6' 1"	24	1	Charlotte
*Lewis, Floyd W.	End	174	6' 0"	23	1	Midland
Paganelli, Santi	End	165	5' 9"	21	0	Grand Rapids
Prendergast, Daniel	End	214	6' 0"	22	1	Owosso
†Vandermeer, Myrton	End	178	5' 10"	22	0	Grand Rapids
Young, Kenneth S.	End	180	6' 1"	22	1	Allegan
Gibbs, Edward H.	Quarter	150	5' 8"	23	0	Perkins
*Grove, Roger R.	Quarter	164	5' 11"	23	2	Sturgis
†McKarns, Donald M.	Quarter	150	5' 8"	21	0	Byran, Ohio
†Schwartzberg, Sam S.	Quarter	150	5' 8"	21	0	Detroit
Stephenson, Mark T.	Quarter	150	5' 7"	20	0	Constantine
*Breen, Gerald	Half	162	5' 10"	22	2	Holland
Fairhall, Markley A.	Half	163	5' 11"	20	0	Danville, Ill.
Ferrari, Florian	Half	154	5' 8"	20	1	Bessemer
Lafayette, Kenneth F.	Half	177	6' 0"	21	1	Detroit
McAfee, Kenneth C.	Half	173	6' 0"	20	0	Battle Creek
†Monnett, Robert C.	Half	175	5' 9"	20	0	Bucyrus, Ohio
*Nordberg, Carl R.	Half	155	5' 8"	22	2	St. Joseph
Olson, Alvin W.	Half	160	5' 11"	23	1	Chicago, Ill.
Raiche, Willard A.	Half	145	5' 10"	23	1	Iron Mountain
Warren, Donald L.	Half	165	5' 9"	21	1	St. Joseph
†Eliowitz, Abe	Full	175	6' 10"	20	0	Detroit
†Kowatch, Joe	Full	180	5' 9"	19	0	Ionia
Liberty, Clifford J.	Full	180	6' 1"	21	0	Gladstone
Van Patten, T. J.	Full	155	5' 8"	24	1	Litchfield

†1929 Freshman Numeral Winners.

*Varsity Letter Men.

ALUMNI AFFAIRS

1875

William L. Carpenter, Secretary
637 Seward Ave., Detroit, Mich.

O. E. Angstman is a lawyer in Detroit with offices at 817 Penobscot building. He lives at 1826 Chicago boulevard.

1876

Ervin D. Brooks, Secretary
710 S. Park St., Kalamazoo, Mich.

J. D. Stannard gives his address as Route 1, Box 221, Phoenix, Arizona.

Russell A. Clark is an import and export agent in the iron and steel business, with offices at 424 Fourth avenue, Pittsburgh. He lives in Pittsburgh at 1132 Murrayhill avenue.

1878

Frank E. Robson, Secretary
Law Dept., M. C. R. R., Room 303,
Detroit, Mich.

James P. Lewis lives in Kansas City, Missouri, at 3406 Lexington.

Richard H. Gulley is proprietor of the Beacon Mercantile service at 810 West Iowa street, Urbana, Illinois.

Henry Valentine Clark is a Presbyterian clergyman in Bloomington, Kansas, and lives in Clearwater, Kansas.

1879

Ray Sessions, Secretary
419 Graceland St. N. E., Grand Rapids, Mich.

Charles F. Davis is living in Fort Collins, Colorado, at 411 South Howes street.

Willard L. Thomas gives his address as Afton, Michigan.

1881

Charles McKenny, Secretary
Michigan State Normal College,
Ypsilanti, Mich.

Amos W. Troupe is division surgeon for the St. Louis Southwestern Railway company, and lives at 917 W. Fifth street, Pine Bluff, Arkansas.

Clarence R. White is manager of industrial relations for the Chicago By-Products Coke company at 3500 S. Crawford avenue, Chicago. He lives at 134 N. Waller avenue.

1882

Alice W. Coulter, Secretary
457 Union Ave. S. E., Grand Rapids, Mich.

H. S. Hackstaff writes from Los Angeles: "I hope to be able to drive my Packard east and be in Lansing next June. Am still sole owner of the H. S. Hackstaff company, carbonic gas, and my business is in excess of 1929, notwithstanding adverse reports of business conditions. Passed my 72nd milestone in June. Still going strong. Hope for many more years of activity."

Jefferson H. Irish has retired and is living at 695 N. 15th street, Salem, Oregon.

Lewis Blynn Hall gives his address as The Shack, R. 1, Bensenville, Illinois.

1890

R. B. McPherson, Secretary
Howell, Mich.

Howard J. Hall is professor of English at Stanford university, California, and lives at Los Altos.

1892

George E. Ewing, Secretary
307 Abbot Road, East Lansing, Mich.

Albert H. Gillett is principal of the high school at Creswell, Oregon.

1893

Luther H. Baker, Secretary
205 Delta St., East Lansing, Mich.

William W. Tracy, Jr., is an associate horticulturist with the U. S. Department of Agriculture, and is located at Twin Falls, Idaho.

George W. Benjamin is in the insurance business at Traverse City, Michigan.

1895

Arthur C. MacKinnon, Secretary
1214 Center St., Bay City, Mich.

J. G. Veldhuis writes from Wolfe Point, Montana: "I enjoyed the reunion in June and all the other visits and reunions that I was privileged to attend in Michigan during my short trip there. Hope we will be able to have another such reunion in 1935."

John P. Churchill is works manager for the Mosher Steel and Machinery company at Dallas, Texas. He lives at Stoneleigh Court, Dallas.

1896

William K. Clute, Secretary
608 Central Trust Bldg., Grand Rapids, Mich.

Clifton H. Briggs says that he is a retired chemist, and makes his home at 5234 Sheridan avenue, Miami Beach, Florida.

George W. Williams is director of factories for the Creamery Package Manufacturing company, 1243 W. Washington boulevard, Chicago. He lives in Oak Park at 341 S. Humphrey avenue.

Orson P. West gives his address as 711 Mary street, Flint, Michigan.

1897

Hubert E. VanNorman, Secretary
Care Borden Co., 350 Madison Ave.,
New York City

Albert T. Cartland gives his address as 613 E. Main street, Lowell, Michigan. He is a pastor of the Methodist Episcopal church.

Charles F. Herrman is a merchant tailor at 612 S. Second avenue, Minneapolis. He lives at Interlachen Park, R. 1, Hopkins, Minnesota.

Sadie Champion Savage (Mrs. Emmett L.) lives in Columbus, Ohio, at 281 14th avenue.

1898

D. A. Seeley, Secretary
East Lansing, Mich.

Bertha Baker Heath (Mrs. E. F.) is business manager of the Department

of Public Baths, Newark, New Jersey. She lives in Newark at 328 Park avenue.

Charles W. Loomis is in the poultry business in Somers, Connecticut.

Clara M. Steele teaches household arts in Albany, New York, where she lives at 582 Park avenue.

Fred T. Williams is a civil engineer in Sanford, Florida. His business address is 108½ Park avenue, and he lives at 320 Oak avenue.

1899

S. Fred Edwards, Secretary
801 Ionia St., Lansing, Mich.

Edward Gagnier is a designer for the Republic Steel corporation at Youngstown, Ohio. He lives in Youngstown at 442 W. Delason.

Philip S. Rose is editor of the Country Gentleman magazine. Rose lives at 640 Ardmore avenue, Ardmore, Pennsylvania.

Edward R. Russell is specification engineer for the Mechanical Handling Systems, Inc., 3454-70 Denton avenue, Detroit. He lives at 13951 St. Marys avenue.

1900

Bertha Malone, Secretary
81 Waverly Ave., Highland Park, Mich.

Charles W. Bale is chief engineer for the Potter Refrigerator corporation, Portland, Oregon. He lives in Portland at 481 E. 18th street North.

John R. Thompson is principal mechanical engineer in the bureau of valuation of the Interstate Commerce commission, Washington, D. C. He lives in Washington at 1431 Whittier street N. W.

1901

Mark L. Ireland, Secretary
Quarters 331, Schofield Barracks, Hawaii
Hugh P. Baker left the National Chamber of Commerce on September 1, 1930, to accept a position as dean of the New York State College of Forestry at Syracuse university, Syracuse, New York.

Arthur H. Hayes is employed by the Mt. Vernon Bridge company, Mt. Vernon, Ohio. He lives at 110 E. Gambier street.

George E. Chadsey gives his address as the Chasleton Hotel, Washington, D. C.

George D. White is divisional director for the Pittsburgh Plate Glass company and is located at Newark, New Jersey. He lives at 370 N. Mountain avenue, Montclair.

Lt. Col. Mark L. Ireland writes from Quarters 331, Schofield Barracks, Hawaii: "My present assignment is that of Quartermaster of the Hawaiian division, also of the post of Schofield Barracks. This is the largest military post in the army and the only one

having a complete division in it. There are two infantry brigades of two regiments each, one field artillery brigade of three regiments, the 3d Engineers, the 11th Medical regiment, 11th Tank company, 11th Signal company, 2nd Chemical company, 11th Ordnance company, 11th Ammunition train, 11th Motorcycle company, Hawaiian division quartermaster train, headquarters and military police company, headquarters of special troops, Hawaiian division headquarters, 5th Bakery company, school for bakers and cooks, school for farriers and horseshoers, 18th Pursuit group, and 6th and 19th Pursuit squadrons. The post is located in the center of the Island of Oahu, about 850 feet above sea level and about 22 miles from Honolulu. At one corner of the reservation is Mount Kaala, 4030 feet high. The reservation runs from the crest of the Koolaa range along the northeast shore across the central valley to the crest of the Waianae range along the southwest shore. Some ten miles away at Waialua on the north shore we enjoy salt water bathing all of the year around. In the uplands here we are in the pineapple region, with plenty of sugar cane somewhat closer to the shores.

"A few doors away are the family of Capt. Ernest John, 35th Infantry, until recently an assistant to the professor of Military Science and Tactics at Michigan State. In the upper post, or 19th Infantry area, is the family of Capt. Louis J. Lampke, supply officer, 19th Infantry, who was in the class of 1907 at Michigan State and played on the varsity team as guard and fullback in the season of 1903. His home is still in Saginaw, Michigan. His daughter, Margaret, was married recently, to 2nd Lt. Vachel D. Whatley, Jr., 19th Infantry, after the experience of having Capt. Lampke's house burn five days before the wedding and having to re-equip themselves completely with clothing and almost completely with house furnishings.

"I expect to be relieved and sail with my family 2 December, 1930, arriving at San Francisco, 8 December, leaving there 13 December, passing through the Panama Canal and arriving in New York City 30 December, 1930. Uncle Sam has not yet revealed what my new station will be, but we are hoping that it will be somewhere on the Atlantic coast, reasonably near Mark, Jr., marine engineer with the Newport News Shipbuilding and Dry Dock company, Newport News, Virginia, and Midshipman Maurice T. Ireland in the Naval Academy, Annapolis, Maryland."

1902

Norman B. Horton, Secretary
Fruit Ridge, Mich.

Harry L. Brunger is factory manager for the Highway Trailer company at Edgerton, Wisconsin. He lives at 104 Albion street.

Wilbur S. Palmer is with the Michigan Public Service company at Kal-kaska.

Earnest A. Richmond is farming at Athens, Michigan.

Emery D. Searing is an advisory engineer for the Barber Colman company, Rockford, Illinois. He lives at 719 Ashland avenue. Burt A. Peterson is with the same company, and lives at 1960 Harlem boulevard, Rockford.

Marcus B. Stevens lives in Kenwood, California. He is a breeder of registered Guernsey cattle and manufactures creamed cottage cheese, "Meadow Lark Meadows" brand.

William F. Uhl is vice-president of the Charles T. Main, Inc., engineers, 201 Devonshire street, Boston, Massachusetts. He lives in Waban, at 19 Kelveden road.

H. Earl Young is editor of the Illinois Farmer, and has offices at 608 S. Dearborn street, Chicago. He lives at 5736 E. Circle avenue, Norwood Park, Illinois.

1903

Edna V. Smith, Secretary
East Lansing, Mich.

Bronson Barlow is in bacteriology work at 2750 W. 35th street, Chicago. He makes his home in Greenville, Michigan. Barlow is the author of articles on mathematics and design, and has several patents, granted and pending, on inventions.

William M. Barrows is professor of zoology at Ohio State university, Columbus.

Olney J. Dean is president and general manager of the Olney J. Dean & company, 137 S. LaSalle street, Chicago. He lives in Detroit at 2070 Longfellow avenue.

Floyd O. Foster is manufacturing buttermilk, and has his store at 1350 Woodward avenue, Royal Oak, Michigan.

James F. Loop is the engineer in charge of motor design at the Graham-Paige Motors corporation, Detroit. He lives at 2475 LaMothe avenue, Detroit.

Owen M. Nacker is the engineer in charge of motors at the Cadillac Motor Car company, Detroit. He lives in Pleasant Ridge at 28 Elm Park boulevard.

H. W. Norton, Jr., is superintendent of advanced registry for the Holstein-Friesian Association of America. He lives in Delavan, Wisconsin.

Glenn C. Sevey is a publisher with offices in the Myrick building, Springfield, Massachusetts. He lives in Westfield at 76 Western avenue.

George Tryon is mechanical superintendent for the Anaconda Copper Mining company at Anaconda, Montana. He lives at 715 W. Third street.

1904

L. T. Clark, Secretary
296 E. Grand Blvd., Detroit, Mich.

Alvine Armstrong Reynolds is house mother and manager for the Beta

Sigma Omicron sorority at the University of California, Berkeley.

Sidney E. Johnson is resident superintendent of the building department for the Michigan State Administrative board. His business address is the Ypsilanti State Hospital, Ypsilanti. He lives in Detroit at 16723 Beaverland avenue.

Wendell S. Merick is president of the Merick Construction company, Chicago, and also president of the Merick-Wildist company, 5300 Lake Park avenue, Chicago. His home is in Flossmoor, Illinois.

Arthur B. Rogers is a merchant at 2016½ St. Aubin street, Sioux City, Iowa. He lives in Sioux City at 2023 S. Royce street.

F. Hobart Sanford is working on citrus development and sales in southern Texas. He may be reached at 437 Abbot road, East Lansing.

1905

V. R. Gardner, Secretary
East Lansing, Mich.

Bessie E. Bemis is dietitian at the Cranbrook school, Bloomfield Hills, Michigan.

John W. Bolte is sales manager for the Hammel & McDermott, Inc., 425 Century building, Indianapolis. He lives at 243 Downey avenue.

Edna Rupert Hanna (Mrs. J. R.) lives in Buffalo, New York, at 368 Shirley avenue.

Robert S. Newton is mechanical designer for the Consolidated Heating company of Albany, New York. He lives in Schenectady at 230 Union street.

Joel G. Palmer is land bank appraiser for the Union Joint Stock Land bank, Union Trust building, Detroit. He lives at 223 E. Washington street, Ionia, Michigan.

Lillian Taft Sage (Mrs. Harry M.) lives in Columbus, Ohio, at 2194 N. Parkway drive.

1906

L. O. Gordon, Secretary
R. 2, North Muskegon, Mich.

A. Scott Armstrong is district manager for the Bates & Roberts Construction company, 111 W. Washington street, Chicago. He lives in Chicago at 1631 Estes avenue.

E. N. Bates is in charge of the Pacific coast office handling grain investigations for the bureau of agricultural economics of the U. S. department of agriculture, with offices in the U. S. Appraiser building, San Francisco. He lives at 108 Central avenue, Sansalito, California.

Cass A. Lamb is general manager of the Great Lakes Forge company, 1220 W. 119th street, Chicago. He lives at 7806 Ridgeland avenue.

Leslie J. Smith is head of the department of agricultural engineering at Washington State college, Pullman.

1907

George Brown, Secretary
East Lansing, Mich.

Herbert R. Beckwith is with the Belle City Manufacturing company, Racine, Wisconsin, makers of agricultural implements, threshers, cornhuskers, etc. He lives in Racine at 1426 S. Main street.

Leroy Dorland in the government inspection service with the U. S. department of agriculture with offices at 212 U. S. Customs House, Galveston, Texas. He may be reached at P. O. Box 117.

Christopher M. Granger is with the United States forest service, and at present is located in Portland, Oregon.

After the first of the year he may be reached in Washington, D. C.

Leroy N. Hayden is a member of the firm of George H. Ruhling & company, practicing and consulting civil engineers, 900 Lawyers building, Detroit. He lives in Detroit at 18915 Puritan.

Helen Andrews Stoffer (Mrs. G. O.) lives at 363 S. 20th street, Lacrosse, Wisconsin.

Earle A. Towne is chief engineer for the Union Steel Products company, Albion, Michigan. He lives at 514 Division street.

A. W. Wilson lives at 105 Glengrove avenue west, Toronto, Canada.

1908

Harry H. Musselman, Secretary
East Lansing, Mich.

Ernest J. Shassberger is manager of sales analysis and research for the Olds Motor Works, Lansing. He lives at 820 N. Capitol avenue.

Orlando W. Stephenson is professor of methods in the social studies at the University of Michigan. He lives in Ann Arbor at 552 Third street.

Eugene I. Wilcox is farming near Pottsville, Michigan.

Lloyd E. Wood is a mechanical engineer with the Western Electric company, Inc., gives his address as 5653 Ridge avenue, Chicago.

1909

Olive Graham Howland, Secretary
513 Forest Ave., East Lansing, Mich.

Frank H. Dains lives in Lansing at 215 Strathmore road. He is a plumbing and heating contractor.

C. W. Edwards, who runs the experiment station at Guam for the United States government, was on the Campus in August in the course of a trip to Washington and intermediate points.

Edwin B. Hulett is in the paint manufacturing business under the name of Yates, Hulett Paint company, and has two shops, one at 2255 Folsom street, San Francisco and the other at 671 S. Daly street, Los Angeles. He lives at 2727 Rock Glen avenue, Eagle Rock.

Benjamin Jerome is quality manager for the H. H. Franklin Auto company, Syracuse, New York.

S. F. Knight is sales engineer for the Mead Morrison Manufacturing company, 1343 Monadnock building, 53 W. Jackson boulevard, Chicago. He lives at 6646 Stoney Island avenue.

Roy R. Lyon is a building inspector with offices in the City Service building, Clinton street, Detroit. He lives at 2639 S. Liddesdale.

Charles W. Mason is research associate in psychology for the American Association of Museums, Washington, D. C., assistant curator in charge of adult education at the Buffalo Museum of Science, and part time lecturer in industrial psychology, evening session, at the University of Buffalo. Mason lives in Buffalo at 223 Minnesota avenue.

Albert Sobey is director of the General Motors Institute of Technology at Flint, Michigan. He lives at 2001 Chevrolet avenue.

Ethlyn Hudson White (Mrs. G. C.) is teaching home economics at Copemish, Michigan.

1910

Mrs. Minnie Johnson Starr, Secretary
627 Madison Ave., Grand Rapids, Mich.

Benton Cataline lives at 701 W. Hamilton avenue, Flint, Michigan. He is an engineer with the Buick Motor company.

Gordon Cavanagh is valuation and

THE BOOK STORE

In East Lansing

Will be pleased to extend a

Mail Service to the Alumni

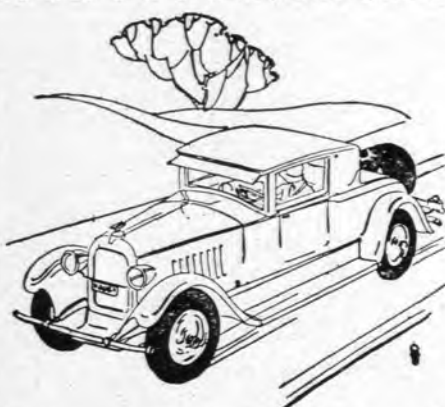
of Michigan State College

We specialize in Textbooks but will be glad to order any book for you. We carry Stationery, Felt Goods, Jewelry and Novelties marked with the college seal.

THE STATE COLLEGE BOOK STORE

EAST LANSING

"Always at the Service of the Students and Alumni"



Starting 16th Year of Success

Assets Over \$1,000,000

Claims paid for 15 years
over \$6,000,000.

ON August 31, 1930, the company started on its sixteenth year of success. The company is operating on a state-wide basis and is carrying over 60,000 policyholders.

It has an agency and adjusting

force in every part of Michigan to assist the automobile owner in trouble. The growth of the company is due to the prompt and fair methods in paying out over \$6,000,000 in claims since organization.

If not insured, call on the local agent or write

CITIZENS' MUTUAL AUTOMOBILE INSURANCE CO.
WM. E. ROBB, Secretary HOWELL, MICH.

rate engineer for the North American Light and Power company, 231 S. LaSalle street, Chicago. Cavanagh lives in Downers Grove, Illinois, at 4935 Highland avenue.

Howard H. Douglass is plant superintendent of the Ira Wilson & Sons Dairy, of 5255 Tillman avenue, Detroit. Douglass lives at 3954 Commonwealth avenue.

Hugh E. Lynch is city planning consultant in Grand Rapids, Michigan. He gives his address as 146 Griggs S. E.

William G. May is district manager for the Allis Chalmers company, 1720 First National Bank building, Cincinnati, Ohio. He lives at 6536 Iris avenue.

Harry Olin is in the grocery business in Lansing at 815 Baker street. He lives at 1609 N. Genesee drive.

James E. Shaw lives in Detroit at 12850 Mark Twain avenue.

William J. Thome is civil engineer for the R. C. Mahon company, 8650 Mt. Elliott avenue, Detroit. He lives at 14911 Fairfield avenue.

1913

Robert E. Loree, Secretary
East Lansing, Mich.

Howard E. Hewitt is teaching in Hillsdale, Michigan, and lives at 160 Oak.

1915

Rolan W. Sleight, Secretary
Laingsburg, Mich.

Kris P. Bemis may be reached at 307 Deering avenue, Portland, Maine.

Anna Cowles Herr writes from 39 Maple avenue, Flemington, New Jersey: "I imagine commencement was a great success. The program looked fine. Indeed I can hardly credit the old College sporting a horse show and all. Wish I were near enough to enter ours. We have two lovely Kentucky bluebloods and a new Irish hunter that jumps five feet nine without a flurry. Of course we'll all land in the poor house but expect to take our horses with us. Virginia Langworthy received her M. D. from Cornell Medical school June 21, graduating with beaucoup honors, and has the much-coveted internship at Bellevue hospital in New York beginning July 1. Ryman sailed July 1 for Europe with his mother. She is a gold star mother so Ry went with her to give her a little independent trip through France and Germany and England. I did not go as our little boy was still in quarantine with a nurse with scarlet fever. Elda Robb is going to Yale next year to study for her Ph. D. She has been with the nursery school at Columbia."

1917

Mary LaSelle, Secretary
420 W. Hillsdale St., Lansing, Mich.

Harold Clemetson has been transferred from the Alpena to the Lansing area of the State Highway department. He is living in Holt.

EAST LANSING STATE BANK

Banking In All Its Branches

East Lansing, Michigan



COURTESY — SAFETY — SERVICE



in

Lansing

It's

THE HOTEL OLDS

OF COURSE you expect more than just a room wherein to deposit your luggage and a bed upon which to recline at day's end. You expect convenience, for one thing—convenience of service and of location. You expect things to be pleasantly comfortable, too . . . Everything "tip-top," in short, from the responsiveness of the elevators to the softness of your mattress. Ample reason then for stopping at the Olds where just such modern comforts and conveniences are offered for your enjoyment.

GEORGE L. CROCKER
Manager

1921

Maurice Rann, Secretary
1409 Osborn Road, Lansing, Mich.

Charles E. Watson is a designing engineer for the Chicago Surface Lines, and may be reached at 4536 S. Johnson avenue, Western Springs, Illinois.

1928

Karl Davies, Secretary
306 E. Court St., Flint, Mich.

Karl Davies sends in the following news: "Mr. and Mrs. F. H. Maxfield (Marion Ullrey, '28), and daughter, Joyce, age 14 months, moved June 20 from East Lansing to 4319 Webster street, Deer Park, Cincinnati, Ohio. Mr. Maxfield has taught chemistry at M. S. C. for the past six years and is now employed as a research chemist by Proctor & Gamble." Davies continues: "Would also like to hear from everyone and I will turn in any items similar to this one that might come to me. I would like to be swamped with mail but as yet I'm not."

George H. Wilson is principal of schools at Onaway, Michigan.

Irene Austin Hardesty (Mrs. John O.) gives her new address as 215

Parker avenue, Waverly Hills, Clarendon, Virginia.

The following letter is from Jim McElroy who is assistant mechanical engineer on a project for the Soviet government, and who may be reached at Cheliabinsk, Siberia, U. S. S. R., care Cheliabinsk Tractorstroy: "Arrived in Cheliabinsk on the 18th (June) and am now busy at work on the tractor plant. We had a very pleasant crossing of the Atlantic, sailing from Montreal the 15th of May on the Montcalm. No mal-de-mer at all. Spent five days in Paris and am anxious to stop on the way home and see more of it. From Paris we went to Berlin by air, making the trip quite easily in 6½ hours flying time—with an hour for lunch in Cologne, where we had the first good coffee since leaving home. France, Belgium and Germany were very easily distinguishable from the air, and as we landed in Berlin we saw many ships on the field ready to take off for most any place one could want to go over here. In this connection, the rest of our party traveled by train between Paris and Berlin and it took them 18 hours. We stayed in Berlin

for three or four days and then to Warsaw, Poland, which is a beautiful city and to us much more interesting than Berlin. Our next stop was Moscow where we waited nearly ten days before coming on here. Saw the many and sundry museums in the city, and went to see the Russian ballett. Believe me, everything else of a like kind is an imitation after seeing it. Moscow, by the way, is one of the most interesting places we've seen thus far. Positively everyone works. Cheliabinsk is two days and two nights from Moscow on the Trans-Siberian railroad via Sverlosk, from which place we traveled overland by Ford and Packard here, through miles of birch and pine. The time honored way of closing a letter to you seems to be 'that the latch-string is always out to M. S. C. folks' which holds true here also."

1929

Phil Olin, Secretary
46 Delaware Ave., Detroit, Mich.

L. E. Skellenger has moved to Newington, Connecticut.

Horace T. Helfrich gives his address as 48 Breed street, Lynn, Massachusetts. Horace is with General Electric company.

Herbert F. Hoffman is farming at Almont, Michigan.

Gwendolyn Packwood may be reached in East Lansing at 132 Division street.

W. Earl McConnell is a field engineer for the Sparks-Withington company of Jackson, and gives the Olympic hotel as his address in San Francisco.

M. Elizabeth Gillis gives her new address as Moscow, U. S. S. R., Bolshoi Gnezdikovskiy 10, Giprozvetmet, Bureau Wheeler.

ALUMNI BUSINESS DIRECTORY

Our Business is Growing THE CORYELL NURSERY

Nurseries at
Birmingham, Southfield and Utica
Headquarters at
West Maple Ave. Birmingham

The Equitable Life Assurance Society of the United States

F. M. Wilson, '17 E. A. Johnson, '18
530 Mut. Bldg., Lansing, Mich.

HERBERT G. COOPER, '16 BUILDER OF GOOD HOMES

with
Bailey Real Estate, Inc.
South Lansing Office
1125 S. Wash. Ave. Phone 2-0751

Students and Alumni
Always Welcomed

at

HURD'S
LANSING AND EAST LANSING

YOU CAN'T LEAVE DISSATISFIED

Hats — Haberdashery — Clothing
ART HURD, Prop.

Insurance Bonds
The B. A. Faunce Co., Inc.
136 W. Grand River Avenue
East Lansing
Real Estate Rentals

The Edwards Laboratory
S. F. Edwards, '99 Lansing, Mich.
Veterinary Supplies Urinalysis
**LEGUME BACTERIA FOR
SEED INOCULATION**

THE CAPITAL PHOTO-ENGRAVERS, INC.
— ARTISTS — — ENGRAVERS —
117 E. OTTAWA ST. LANSING, MICH.

The Mill Mutuals

Agency

Lansing, Michigan

INSURANCE

In All Its Branches

A. D. Baker, '89 L. H. Baker, '93

John Hancock Series

YOUR ESTATE today and tomorrow

YOU naturally expect your present estate will grow considerably before it is turned over to your heirs and dependents. Why not guarantee that growth, with life insurance? You can create any desired estate today with a John Hancock policy.

John Hancock
LIFE INSURANCE COMPANY
OF BOSTON, MASSACHUSETTS

INQUIRY BUREAU
197 Clarendon St., Boston, Mass.

Please send booklet, "This Matter of Success."

Name.....
Address.....

A.G.

Over Sixty-five Years in Business